

NEPTUN

L I G H T

CONVENTION CENTER LIGHTS

Pictured Kansas City Convention Center
featuring Neptun Light's LED High-Bays



LED HIGH-BAYS

- GLARE-FREE
- Mounting up to 80 Feet
- 65°C Ambient
- 10 Year Warranty

Neptun Light, Inc.
13950 Business Center Drive
Lake Forest, IL 60045
Fax: 847.735.8004



lightinnovations@work™

www.NeptunLight.com

@NeptunLightNews

888.735.8330

Technical Specifications

STRUCTURE, MATERIALS, & FEATURES

- 25" Aluminum hood with silver powder coat finish.
- Aluminum cast heat sink for excellent thermal management.
- High Output COB LED's.
- High power factor, low THD driver with 6kV/3kA surge protection.
- High performance Thermal Management system.
- Instant-On flicker-free Cold Start and Hot Re-Start.
- LED engine design with Advanced Thermal Management allowing for operating temperatures @ 65°C / 149°F.
- Up to 20 year maintenance free operation.
- 10 Year Warranty on complete fixture. (LED's, Driver, & Housing)
- **Optional:** Bi-Level Dimming, 0-10V Dimming, Wi-Fi Control, Remote Monitoring and ON/ OFF Control

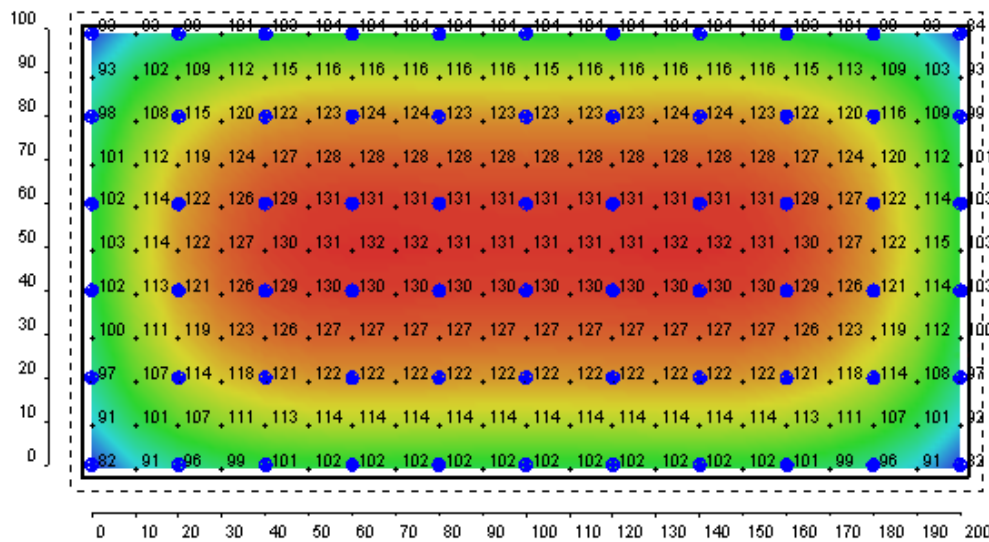
PRODUCT INFORMATION

Model No.	Description	Input Watts	Delivered Lumens	Universal Line Voltage (VAC)	Max Line Current (Amp) @ 120 - 277	THD	Power Factor	Weight
LED-25200-AL-UNV	LED High-Bay	202	23,020	120-277 / 347-480	1.74 - 0.75	<15%	>0.95	30 lbs
LED-25250-AL-UNV	LED High-Bay	252	28,720	120-277 / 347-480	2.18 - 0.94	<15%	>0.95	30 lbs
LED-25300-AL-UNV	LED High-Bay	301	34,300	120-277 / 347-480	2.62 - 1.13	<15%	>0.95	40 lbs
LED-25400-AL-UNV	LED High-Bay	401	45,700	120-277 / 347-480	3.49 - 1.51	<15%	>0.95	40 lbs

SPECIFICATIONS

- Driver Constant Current
- Start Method InstantON
- Hot Re-start InstantON
- Driver UL Rating Class 1
- Driver UL Outdoor Rated Wet Location
- Sound Rating Class A
- ANSI Surge Protection IEEE C62.41 C High
- Driver Off-State Draw 0 Watts
- Universal Input Line Voltage 120-277 VAC / 348-480VAC
- Input Line Frequency 50/60 Hz
- Projected (L70) @ 25°C > 100,000 hrs.
- Color Temperature 5000°K/4100°K/3500°K,3000°K
- Color Rendering Index (CRI) > 80
- Minimum Starting Temperature -40°C
- Maximum Starting Temperature +65°C
- Lumens per Watt > 110
- Shock / Vibration Resistant Yes
- Power Factor > 0.95
- Total Harmonic Distortion < 15%
- Inrush Current Peak < 10 Amp
- FCC Compliance Part 15, Subp. C
- ETL Listed / UL Standard 1598 Yes
- Housing IP Rating IP43
- Driver IP Rating IP67
- Warranty 10 Year

PHOTOMETRIC PERFORMANCE



Calculation Results

Average: 116
 fc
 Maximum: 132 fc
 Minimum: 82
 fc
 Max / Min: 1.6:1
 Average / Min: 1.4:1

Neptun Light, Inc.
 13950 Business Center Drive
 Lake Forest, IL 60045
 Fax: 847.735.8004



lightinnovations@work™

CONVENTION CENTER



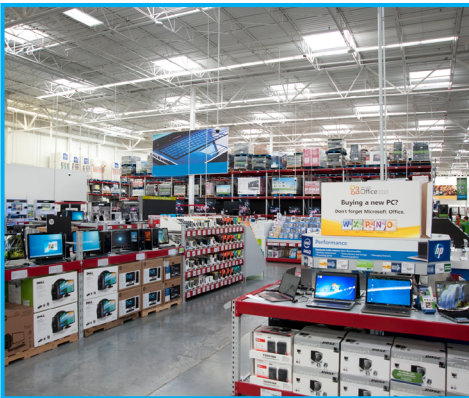
Convention Centers require optimal lighting conditions to ensure both safety and the ideal display of its exhibitors. Clear visibility and uniform light distribution is easily attainable with Neptun's LED High-Bay fixtures. Neptun continually invests substantial resources into developing fixture designs that achieve high quality lighting conditions in open areas.

INDUSTRIAL

Special attention to lighting strategy is required for gymnasiums and arenas hosting athletic activity. Neptun LED High-Bay fixtures minimize glare, reduce shadows, and lend themselves to uniform light distribution through highly engineered chip and fixture lenses. InstantOn technology eliminates light delays and promotes good energy economy for facility managers and users.



RETAIL



Neptun's LED High-Bay fixtures enhance aesthetic appeal for retail facilities while improving safety and efficiency. Delivering 80+ CRI (Color Rendering Index), Neptun fixtures elevate product appeal by boosting colors and minimizing shadows. Retail businesses take advantage of substantial savings from decreased energy consumption and various financial government incentives for making the environmentally conscious transition.

HANGAR

Neptun High-Bays offer incredible versatility in design and distribution control for large open spaces such as airport hangars. LED technology creates safer working conditions by improving essential visibility and minimizing glare, all while dramatically reducing energy consumption expenses along with maintenance costs.



Neptun Light, Inc.
13950 Business Center Drive
Lake Forest, IL 60045
Fax: 847.735.8004

*light*innovations@work™

SAVINGS ANALYSIS

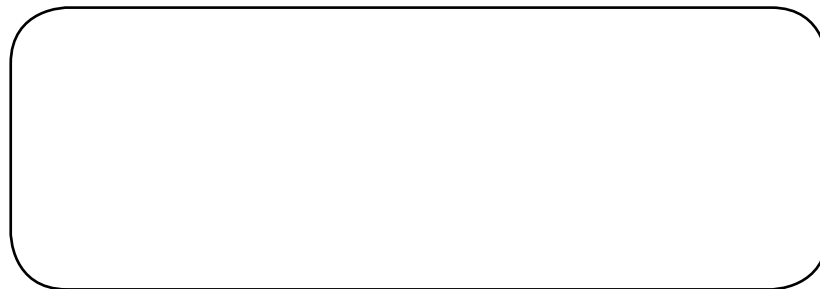
lightinnovations@work™

	1,000W H.I.D High-Bay	400W LED High-Bay
Rated Wattage	1,000 Watts	450 Watts
Input Wattage	1,130 Watts (with Ballast)	452 Watts
No. of Fixtures	850	850
Running Time/Year	4,380 Hrs.	4,380 Hrs.
kWr Rate	\$0.11	\$0.11
Annual (kWh)	4,206,990	1,492,923
Annual (kWh) Savings		2,509,302
Annual Energy Costs	\$462,769	\$164,222
Annual Energy Savings		\$298,547
Energy Savings Over Life of LED		\$5,970,947
Annual Labor Cost	\$5,811	\$0
Labor Savings Over Life of LED		\$116,227
Annual Material /Recycle Cost	\$11,344	\$0
Material Savings Over Life of LED		\$226,870
Life Cycle Gross Cost Savings		\$6,372,333
PAY BACK (includes parts & labor)		2.40 YRS.
LBS of CO2 Removed		77,662,316 lbs.
# Cars Removed from Road		67,146

* Based on 20 Year "Service Life of LED's"

About Neptun Light

Neptun Light is a leader in the manufacture of energy efficient retrofit products and light fixtures in the fields of LED, Induction, and Solar technology. We boast a highly diversified product portfolio of indoor and outdoor products. Additionally, our products span a wide range of commercial, industrial, government, and utility infrastructure applications. Neptun Light achieves its level of success through timely development of new technology that caters to a constantly evolving marketplace. Among Neptun Light's core values are continuous innovation, high quality products, a focus on energy conservation, and an uncompromised commitment to customer service.



Copyright

This publication, including all photographs, illustrations and software, is protected under international copyright laws, with all rights reserved. Neither this publication, nor any of the material contained herein, may be reproduced without written consent of the author.

© Copyright 2018

Neptun Light, Inc.
13950 Business Center Drive
Lake Forest, IL 60045
Fax: 847.735.8004

lightinnovations@work™