



# TAP SCORE

Home Testing

Share your Tap Score!  
#mytapscore

The logo for 'TAP SCORE' is centered on the box. 'TAP' is in a bold, blue, sans-serif font. 'SCORE' is also in a bold, blue, sans-serif font. The letter 'O' in 'SCORE' is replaced by a stylized orange and yellow molecular structure icon. The background of the box is white with a faint, light blue pattern of various scientific and data-related icons, including charts, graphs, and chemical structures.

# TAP SCORE

Home Testing



TAP SCORE

Let's get started!

TAP SCORE

Sample Information

Please provide the information on the reverse side of this card.



Place this back in your Tap Score kit before returning your sample.

Let's get started!

mytapscore.com

**IMPORTANT!**

## CHOOSING A SAMPLING LOCATION

**CHOOSE ONE OF THE FOLLOWING OPTIONS**

Your test results will represent a snapshot in time. The sampling location can affect your final report.



### 1. Kitchen Faucet

The cold water in your kitchen is a common sampling location, as it is often the most frequently ingested supply.



### 2. Wellhead or Source (for private well / spring owners)

Testing at the wellhead or source is the standard way to assess source water quality, though you will not detect the impact of plumbing issues on your drinking water.



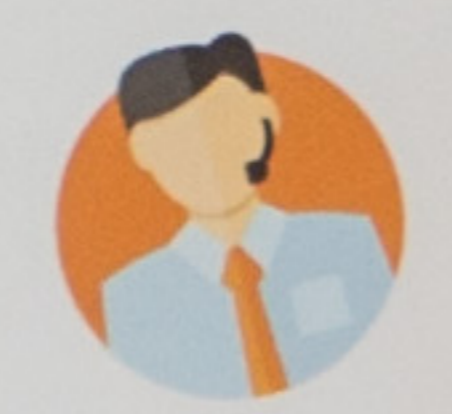
### 3. Refrigerator Water Dispenser

If you often drink water from a refrigerator, it is likely treated by an internal filter. Any such samples you collect will therefore include the effect of this filter.




### 4. Before or After an Installed Filter

Collecting water from a tap "before" a filter will reveal water quality. Testing your water "after" it passes a filter will demonstrate what you are actually drinking. Both you need two Tap Score packages.



Questions?  
Chat with us

**Water Sample Information**



**RETURN TO LAB WITH YOUR SAMPLE**

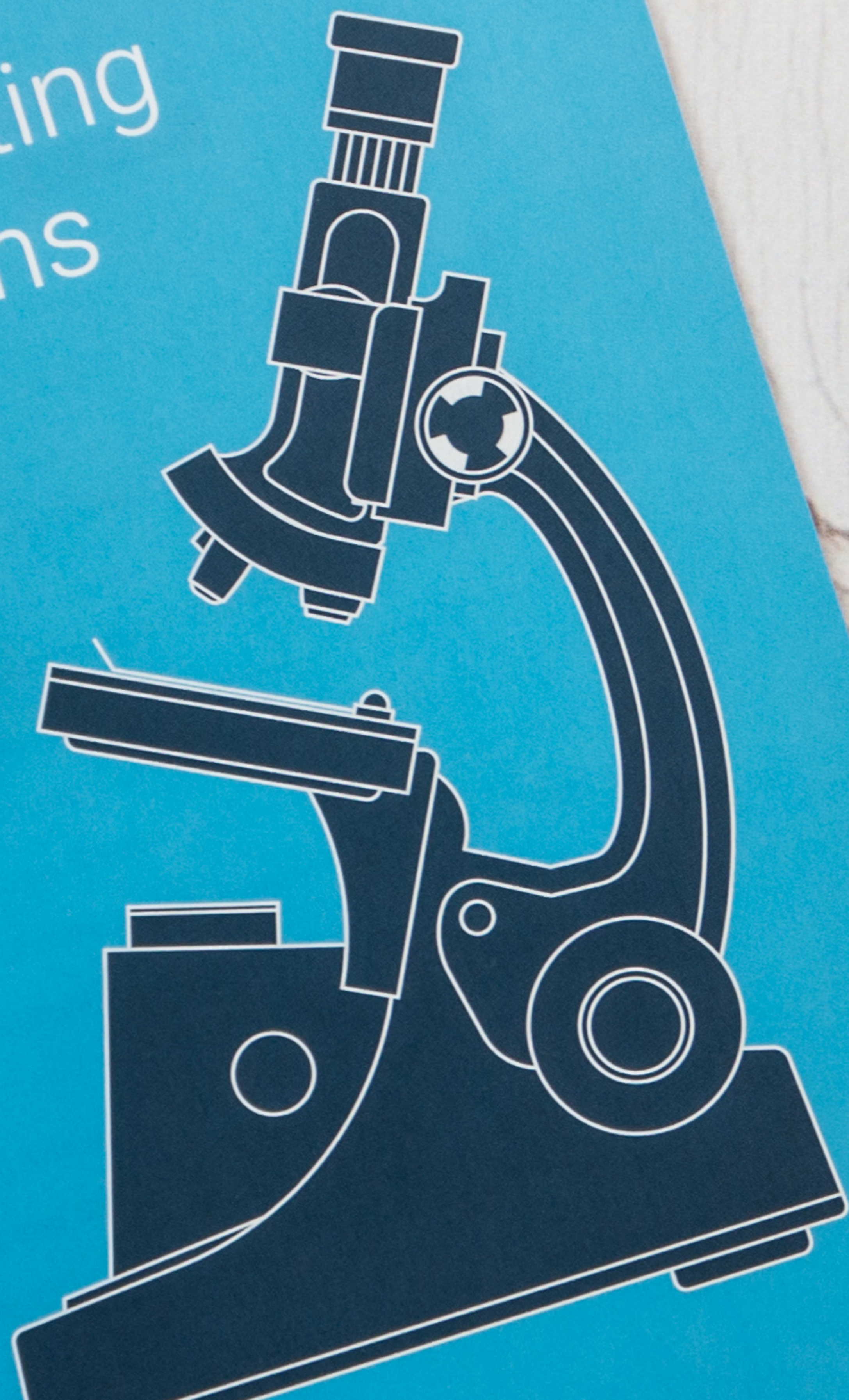
**TAP SCORE**



**TAP SCORE**

PLEASE READ  
CAREFULLY

Specialized  
Water Testing  
Instructions





**TAP SCORE**

### This is your TAP SCORE™ Report

BASED ON LABORATORY TESTING AND ANALYSIS YOUR TAP SCORE IS **47 (BAD)**

According to SimpleWater Recommendations, which are based on guidelines established by Federal and State agencies as well as leading academic research, the water samples you provided for testing demonstrate your water quality is Bad. This means your sample contained several concerning risk factors. Please read through your Report and [contact us](#) if you have any questions or concerns.

SAMPLE - Advanced Well Water Test  
Ordered October 11, 2016

Scroll to continue your report

Introduction -

47

Clear X

SimpleWater Tap Score  
Hi there, this is an example Tap Score report. Let us know if you need help...

Type here to search

TOSHIBA

Satellite

7:49 PM 1/25/2019



## About SimpleWater and Tap Score

SimpleWater is a Berkeley, CA company working to improve environmental health and testing data. SimpleWater owns and operates the [Tap Score Water Testing service](#). Tap Score is the largest residential water testing service in the United States, providing millions of homes and businesses with easy access to state-of-the-art environmental lab testing, health reporting and remediation services.

## Do people really know what's in their water?

Safe, clean drinking water keeps the body strong and the mind sharp. However, nationwide, millions of citizens are exposed to contaminants which have serious chronic effects on their health and wellbeing.

To address this issue, SimpleWater's team of water experts, engineers and designers, led by Co-Founders John Pujol and Julio Rodriguez, built the most informative and powerful water testing service ever provided, Tap Score. Developed for home and private property use, Tap Score Water Testing Packages are the first to provide ANY user with easy access to certified laboratory testing, personalized health analysis and optimized water treatment matching.

SimpleWater's intention is to help people understand and take control of the body's most important ingredient and the environment's most important resource [water].

Tap Score kits include everything an individual would want and need to know about their water and health:

- **Professional Laboratory Testing** of more than 400 regulated and not-yet regulated contaminants. All chemical testing follows National ELAP approved methods. Laboratory personnel enter testing results into proprietary SimpleWater software for error checking and uploading for Health Analysis.
- **Brilliant Water Quality Reporting** in plain English. Testing covers 400+ of the most critical and potentially harmful contaminants commonly found in US water systems and private wells. Likely sources of each chemical, known health impacts and methods for treating contamination are identified. Current toxicology and epidemiological data give users the safe level of each contaminant in their drinking water. Going far beyond the EPA's Maximum Contaminant Levels for each of the regulated contaminants. MCLs are often set above health-optimized levels because they must accommodate the water industry's treatment costs. This means that many water health regulations underestimate the potential health effects of regulated contaminants.
- **Personalized Health Analysis** to understand what your water means for your body. Researchers at the University of California, Berkeley were first to design the Tap Score Health Analysis software. Meanwhile, Graduate students at the Boston University School of Public Health are integrating the latest research from trusted toxicology and epidemiological with national regulations and government reporting. Performing the first known comprehensive work

on assessing a quantifiable measure of water and environmental health due to exposure from various contaminants.

- **Personalized, Unbiased Water Treatment Recommendations** based on personal preferences and individual water quality report. Unbiased matching algorithm compares each unique water quality report with a curated, highly-trusted list of NSF and WQA certified water treatment products; incorporating personal preferences, installation requirements, lifetime costs, replacement factors, family size, and treatment location.

- **Professional Engineering Support** for questions via phone and email.











6:54

get started! mytapscore.com

# TAP SCORE



## YOUR REPORT

ALKALINITY (AS CaCO<sub>3</sub>)  
[show more](#)

YOUR MEASUREMENT  
118 PPM

FLUORIDE  
[show more](#)

YOUR MEASUREMENT  
0.26 PPM

### Watch list

HERE ARE THE GREATEST POTENTIAL HEALTH RISKS IN YOUR DRINKING WATER

At the end of your Tap Score report you'll find an exhaustive list of the contaminants tested in your sample and their position relative to these goals. As we continue to research water contamination and health we will update your score accordingly.

**Cu**  
METAL

Copper Measurement: **2.9 PPM**



Exceeds Simplewater's recommendation of 0.3 PPM

#### HEALTH EFFECTS

Copper is an essential element for your health. However, too much of it especially among young children can cause diarrhea and stomach cramps. Copper has also been associated with liver and kidney disease. The State of California suggests a safe level of 0.3 PPM and the US EPA suggests 1.3 PPM.



Blood



Liver



Other



Gastrointestinal (lower)

### results

COMPLETE OVERVIEW OF WHAT WAS TESTED IN YOUR SAMPLE.

YOUR MEASUREMENT  
2.9 PPM

Exceeds Simplewater's recommendation of 0.3 PPM

YOUR MEASUREMENT  
0.51 PPM

Exceeds Simplewater's recommendation of 0.3 PPM

YOUR MEASUREMENT  
0.002 PPM

Exceeds Simplewater's recommendation of 0 PPM

YOUR MEASUREMENT  
0.062 PPM

Exceeds Simplewater's recommendation of 0.04 PPM

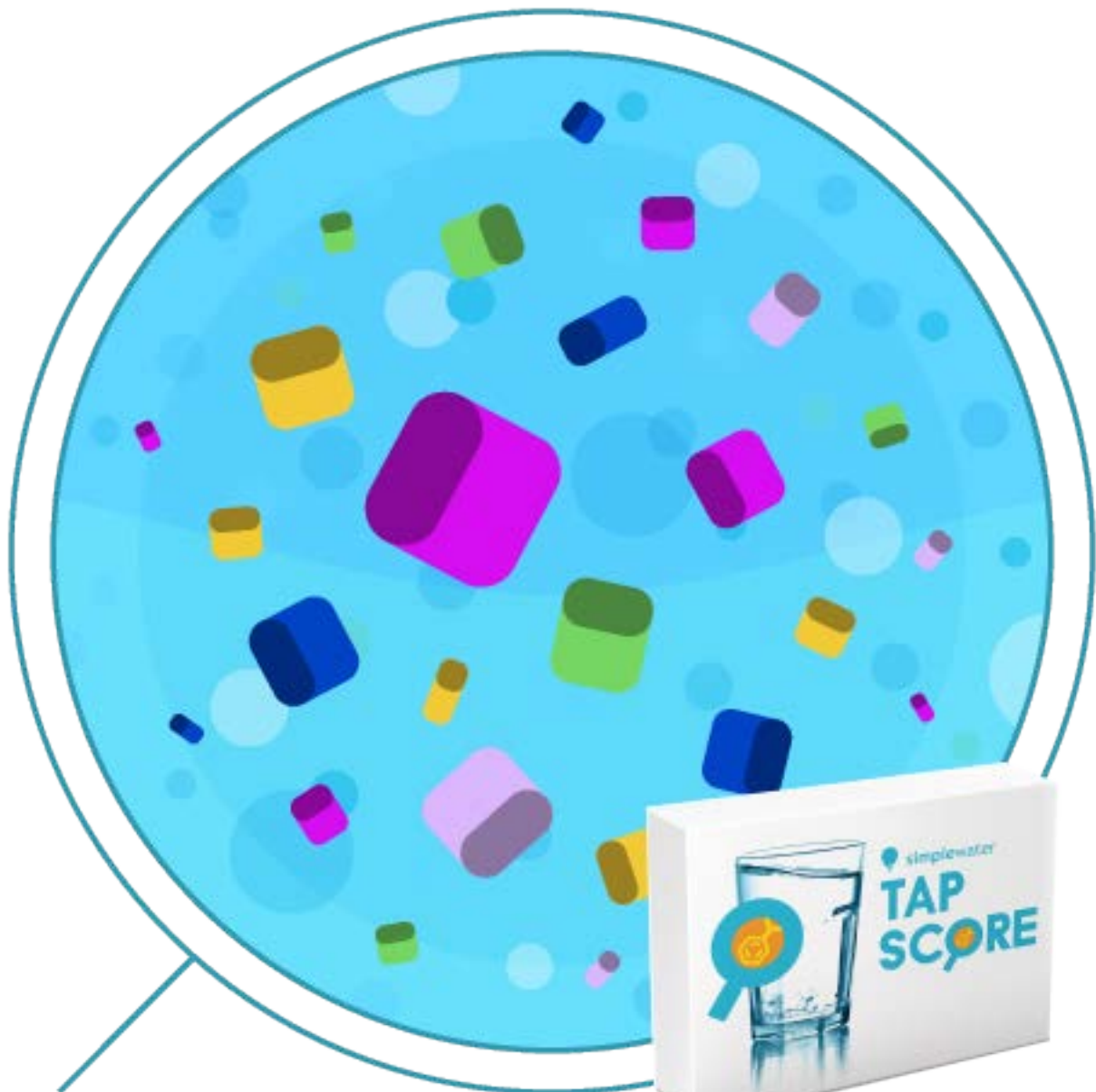
YOUR MEASUREMENT  
348 mmhos

YOUR MEASUREMENT  
200 PPM

Exceeds Simplewater's recommendation of 150 PPM



**TAP  
SCORE**  
WATER ANALYSIS

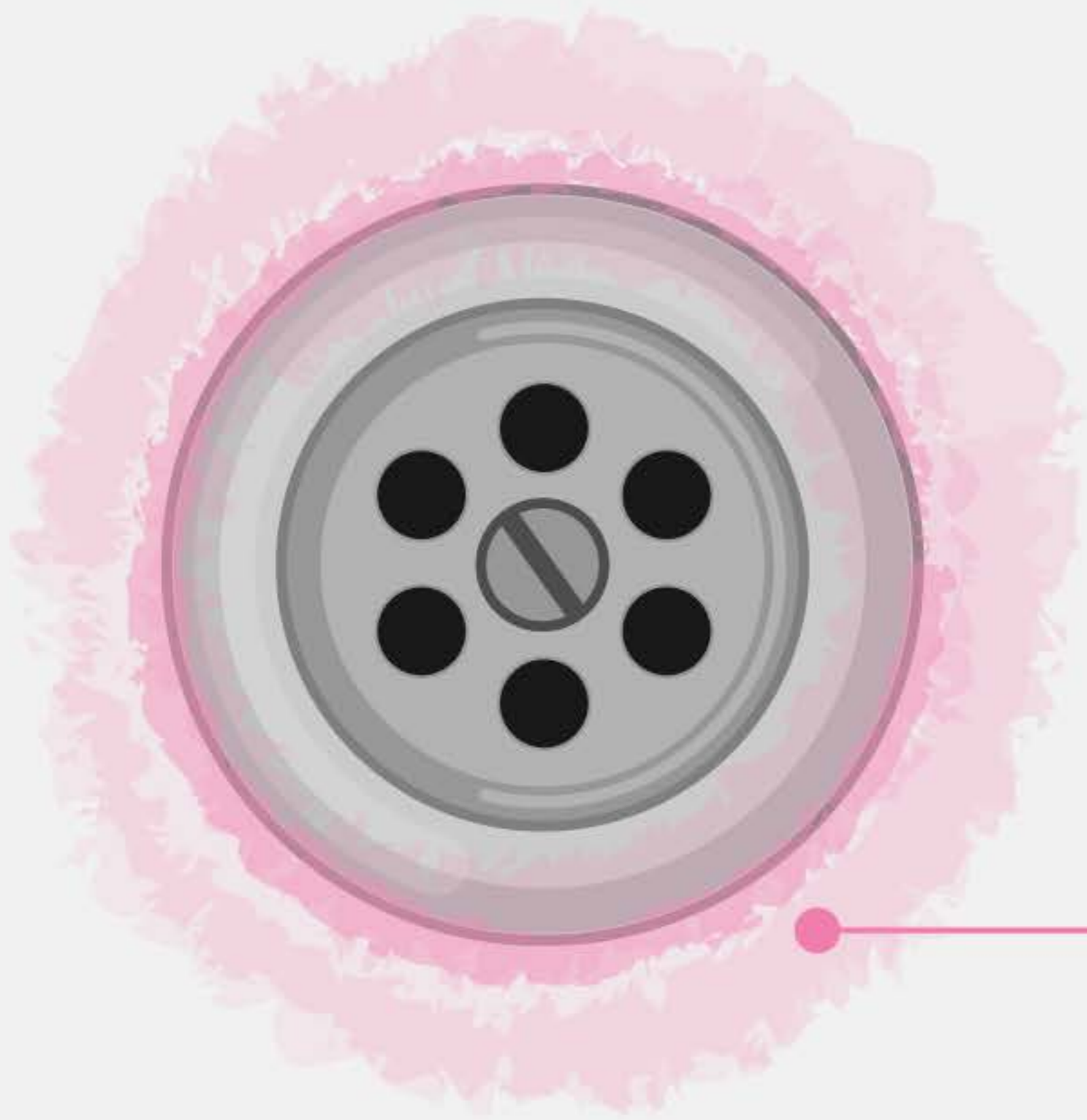












What is that  
pink slime?



simplewater

KNOW YOUR WATER WELL™