

Wi-Fi Asset Tags & Badges



Real time location tracking of assets and people

Our Wi-Fi location tags provide active location tracking in real-time enabling you to track and locate assets and people quickly.

Open Standards

Asset tags are compatible with open standard 802.11 Wi-Fi networks. Tracks location in real time using the Wi-Fi access points.

Smart Asset Tag

Asset tags can be mounted directly on assets (IT servers/equipment, X-Ray machines, and so on). Tags contain remotely activated audio and LED light alerting enabling easy in room location of assets.

Two configurable buttons can be used to send notifications or alarms such as when asset is repaired. Battery lasts up to 5 years and alerts the operator when the battery is low.

Each tag has a unique barcode readable ID number to assist inventory checking.



Smart Asset Tag

Staff Badge

Staff badges as usually worn on neck lanyards and have a rechargeable battery. Like the asset tags they log the location of the wearer in real-time, include audio and LED light alerting and have two response buttons.

Badges also include a text display to provide information to staff, such as "Go to Room 1", "Please help Stan in the Library" etc.

KEY BENEFITS

- > Enterprise-wide asset visibility
- > Find an asset instantly
- > Improve staff efficiency
- > Increase staff efficiency & safety

KEY FEATURES

- > The most accurate Wi-Fi asset tag
 - Unbeatable accuracy with a standard Wi-Fi network
- > Works on any Wi-Fi network (2.4GHz)
- > Long battery life up to 5 years
- > Low battery warning system
- > Two programmable buttons
- > Remotely activated audio and LED light alerting
- > Small size to fits most assets
- > Staff Badge provides additional features
 - Instant alarm safety pull cord
 - Text Messaging to badge
 - Instant alarm safety pull cord



Staff Badge

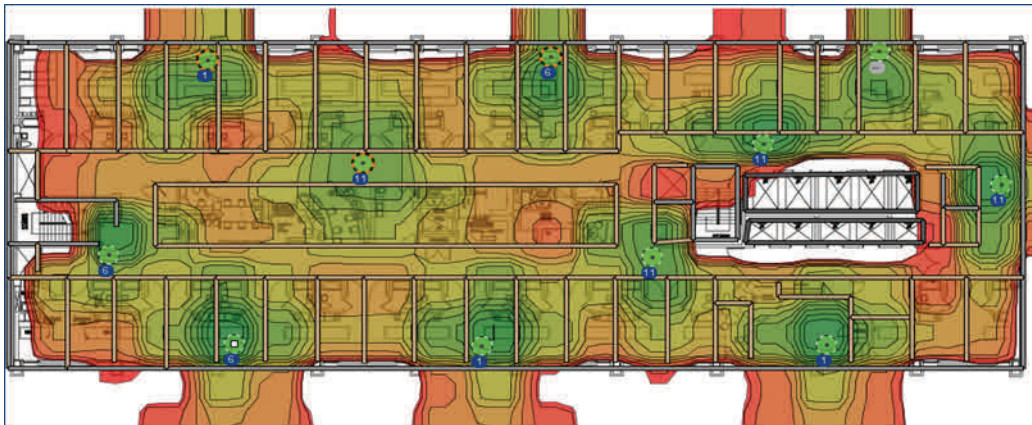
CALL ON: 0845 293 2790
EMAIL: customer.services@ait-pg.co.uk
WEB: www.ait-pg.co.uk

Wi-Fi Asset Tags & Badges

Real Time Location

Assets and people move! These tags and badges provide updates to the management software so you can find them in a jiffy. The system works using your standard wireless network, though this is sometimes enhanced with a few extra access points so that location can be more accurately monitored. The key to ensure that two or three access points can always 'see' the tag or badge which enables triangulation of the location. Accuracy to 3-5 Metres is possible. Throttle points, such as main exits, can include extra beacons to trigger instant alarm conditions.

The tags and badges include clever energy saving features such as reduced 'blink' rates while stationary to provide maximum battery life.



Example Heat Map of Wireless Network

Where are Wi-Fi Asset Tags and Badges Used?

Asset tags such as these were originally used in hospitals to track moveable equipment such as X-Ray and kidney dialysis machines while badges were originally used in secure units such as prisons and secure hospital wards. As costs have become more attractive their use has now spread to other industries such as schools, logistics and enterprise businesses. In essence any item can be asset tagged from wheel chairs in an airport to servers within a data centre. Badges have found uses to keep tabs on visitors and to ensure one-worker safety in critical areas such as industrial plants and data centres.

They use the regular wireless network you probably already have, and so are a relatively easy technology to adopt.

Find Out More

To find out how PowerBCM can differentiate your Colocation facility please call AIT on **0845 293 2790**.

AIT Partnership Group Ltd
670 Eskdale Road
Winnersh Triangle
Reading, RG41 5TS

Contact Us
T: 0845 293 2790
E: sales.support@ait-pg.co.uk
W: <http://www.ait-pg.co.uk>

©Copyright 2014, Rev1, 10/5/14

About AIT

AIT Partnership Group Ltd provides independent expertise and technical services and solutions tailored to business needs that save energy, improve reliability and help make business assets more productive.

Talk to AIT today on **0845 293 2790**