

# SIMPLY CHECK DAMAGE CLAIMS

## CLAIMS INFORMATION SYSTEM

The screenshot displays the UBIMET Claims Information System interface. On the left is a navigation menu with options: Home, Lightning Query, Query, Archive, Wind Query, and Hail Query. The main content area is titled "Lightning Query" and features a "Location:" search bar with "sydney" entered and a "Search" button. Below the search bar is a map of Australia with a red pin on Sydney. To the right of the map, the "Search results" section shows "Sydney, NSW, Australia" as the selected result. The background of the entire advertisement is a night scene of a building with a large lightning bolt striking the sky.

## HIGH-PRECISION METEOROLOGY

UBIMET is Europe's leading supplier of claims information systems and focuses on high-precision meteorology. The shareholder structure – with Red Bull acting as co-owner alongside two private foundations – ensures stability. For more than ten years, quality has been maintained by an in-house Research and Development department as well as ISO 9001-certified processes. In 2013, UBIMET purchased a stake in nowcast, the global market leader in the field of 3D lightning tracking. With its lightning detection system powered by nowcast, UBIMET is able to offer an extensive range of precise lightning data.



# CIS

# CLAIMS INFORMATION SYSTEM

## ONLINE PORTAL FOR HISTORIC, PINPOINT WEATHER DATA

- Search by address and period – and access pinpoint results for your chosen location
- Add to, save, and export your unambiguous results
- Benefit from detailed information and straightforward maps

### RAPID VERIFICATION OF DAMAGE CLAIMS



- Protection against insurance fraud

### REDUCED ORGANIZATIONAL AND PROCESS COSTS

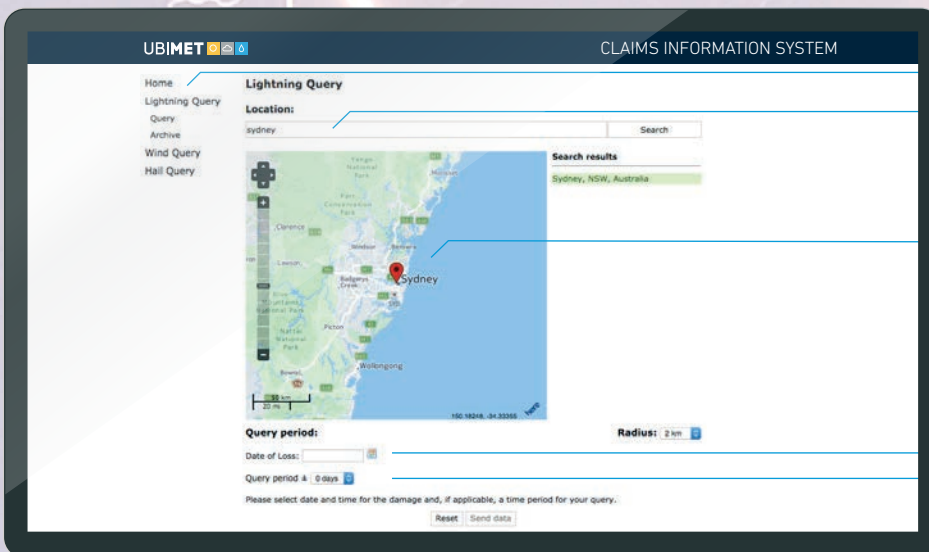


- Straightforward searches and clear results

### INCREASED CUSTOMER SATISFACTION



- Enhanced efficiency in claims management



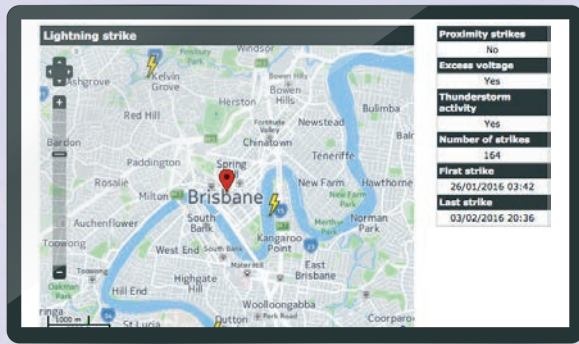
Select the weather module

Enter the relevant address

Pinpoint results for your chosen location

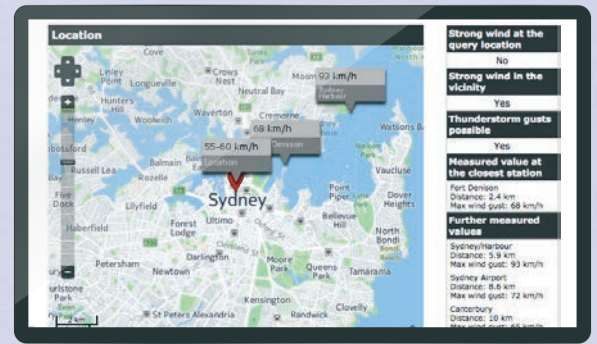
Select the time of the claim

Select the search period ± 6 days



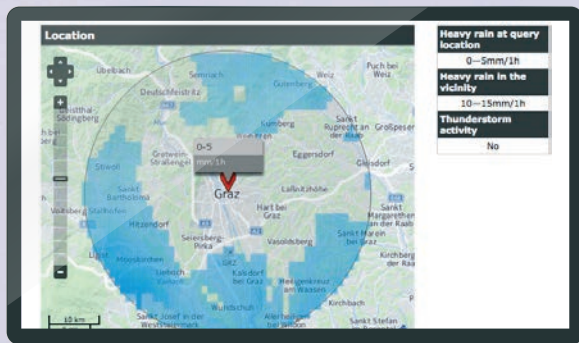
## LIGHTNING

- Details of lightning strikes, close-proximity lightning, and lightning strength
- Information on power surges, distance, and storm activity
- Details of the first and last lightning strikes
- Overview of all lightning activity in table form



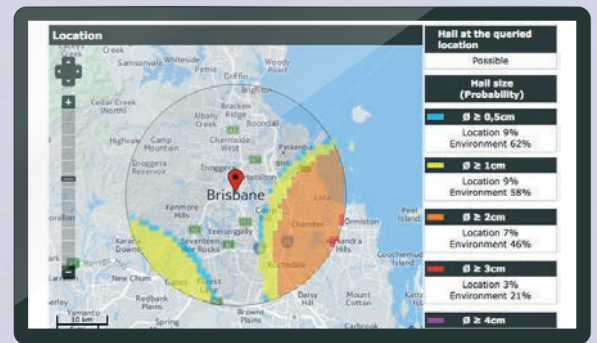
## GALES

- Details of wind speeds
- Table of recorded values by weather stations according to WMO standards
- Further relevant information, such as lightning activity and distance
- Wind speeds for a wider area



## HEAVY RAIN

- Details of precipitation amounts
- Information on storm activity
- Amounts of rain in the surrounding area
- Clear summary of results



## HAIL

- Information on hail and hailstone size
- Hail areas indicated in different colors, depending on hailstone size
- Information on hail events in the surrounding area
- Clear summary

## TOP QUALITY

- Outstanding coverage and a comprehensive measurement network
  - Access to public and private weather data
  - In-house measurement network continuously expanded
- Cutting-edge sensors for maximum precision
- Precision 3D lightning-tracking system
  - Location accurate to a radius of 100 meters; even small discharges are recorded
  - Able to precisely distinguish between strikes and cloud flashes
- Easy integration thanks to system interface

## CONTACT

### GLOBAL HEADQUARTERS

UBIMET GmbH  
ARES Tower  
Donau-City-Straße 11  
1220 Vienna  
Austria  
T +43 1 263 11 22 0  
F +43 1 263 11 22 219  
E [info@ubimet.com](mailto:info@ubimet.com)  
[www.ubimet.com](http://www.ubimet.com)

### AUSTRALIA

UBIMET Pty Ltd  
Level 20, 350 Queen Street  
Melbourne VIC 3000  
T +61 3 8488 7610  
E [sales.au@ubimet.com](mailto:sales.au@ubimet.com)

### USA

UBIMET North America Inc.  
61 Broadway  
New York, NY, 10006  
T +1 646 690 42 00  
E [usa@ubimet.com](mailto:usa@ubimet.com)

## ABOUT UBIMET

UBIMET is a leading commercial provider of precise meteorology services and severe weather warnings. The global company headquartered in Vienna, Austria has offices in Karlsruhe, Melbourne, Munich, New York and Zurich employing 250 staff from 25 nations. UBIMET provides high-quality meteorological data, forecasts and alerts enabling weather-dependent industries around the globe to increase safety and efficiency.

UBIMET's expertise and reliable weather solutions have convinced customers from industries such as aviation and rail, construction, energy, insurance, media as well as event organizers. UBIMET has delivered accurate weather data for Formula 1 since 2014.

The company was founded as a start-up by Michael Fassnauer and Manfred Spatzierer in Vienna in 2004. The two founders, driven by a passion for meteorology, are still the driving force behind the company today. Red Bull has been a strategic partner since 2012 expanding the company's global reach.

## GROUP MEMBERS

EWC Weather Consult GmbH  
Schönfeldstraße 8  
D-76131 Karlsruhe  
T +49 (0)721 663 23 0  
E [info@weather-consult.com](mailto:info@weather-consult.com)  
[www.weather-consult.com](http://www.weather-consult.com)

MeteoNews AG  
WETTERBÜRO  
Siewerdstrasse 105  
CH-8050 Zürich  
T +41 43 288 40 50  
E [kontakt@meteonews.ch](mailto:kontakt@meteonews.ch)  
[www.meteonews.ch](http://www.meteonews.ch)

nowcast GmbH  
Albert-Roßhaupter-Straße 43  
81369 Munich  
T +49 89 552 97 13 70  
E [info@nowcast.de](mailto:info@nowcast.de)  
[www.nowcast.de](http://www.nowcast.de)