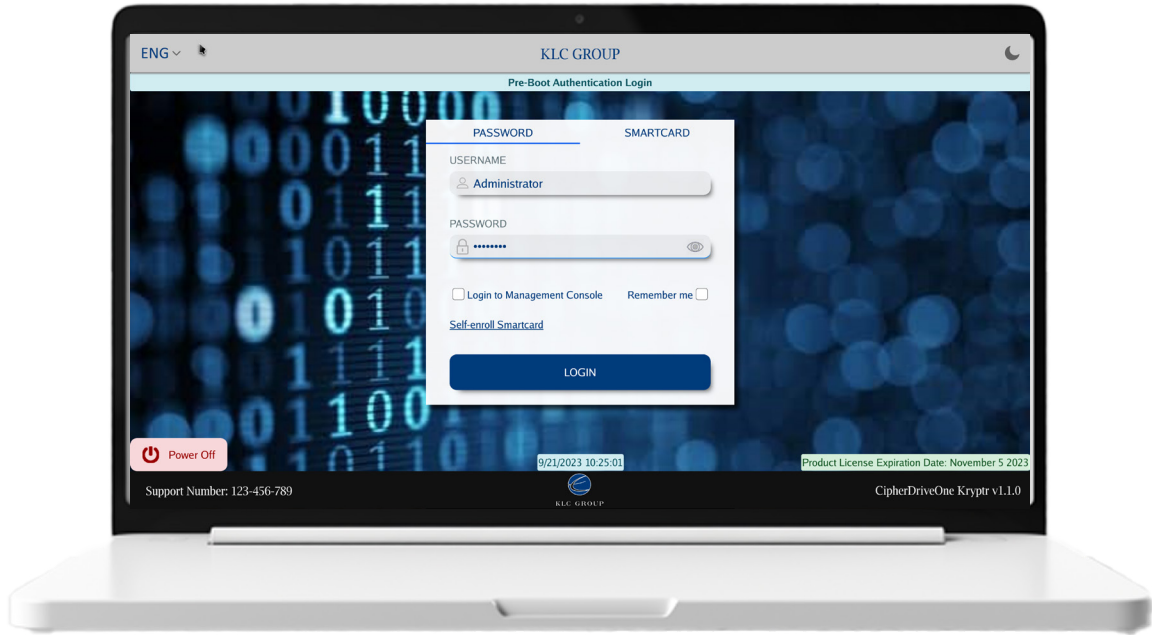




CipherDriveOne
KrypTr



Unified Encryption for Data-at-Rest

Experience unparalleled data protection with our cutting-edge solutions – CipherDriveOne KrypTr is an integral component of our unified encryption suite. Safeguard your sensitive information with ease, efficiency, and confidence. CipherDriveOne KrypTr is a software full disk encryption product meeting both Authorization Acquisition (AA) and the Encryption Engine (EE) in one package. This unified encryption solution allows government customers the ability to provide storage of classified, secret, and top-secret data in accordance with the Commercial Solutions for Classified (CSfC) program’s software full disk encryption (SWFDE) standards.

Laptops



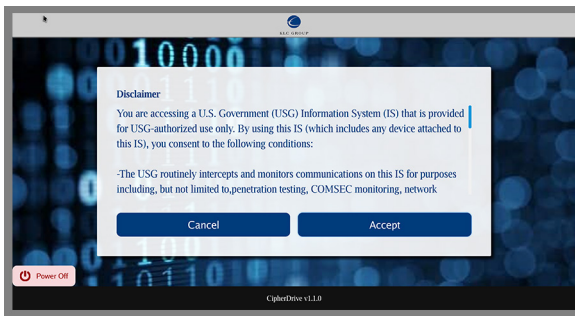
Workstations



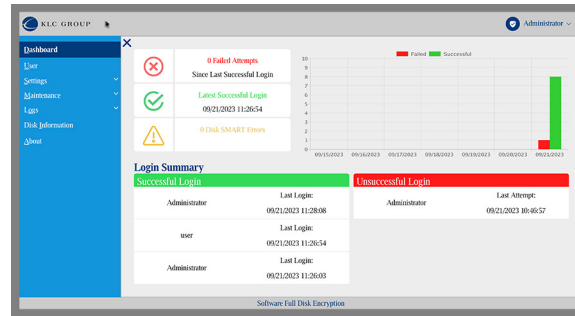
Servers



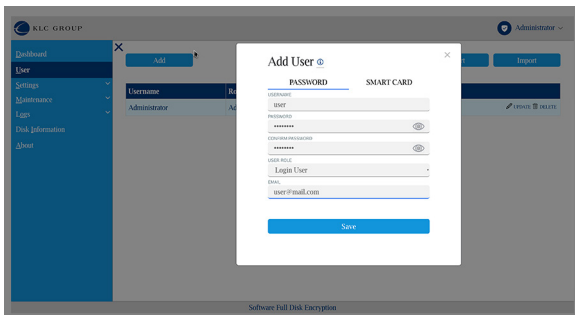
CipherDriveOne KrypTr Features



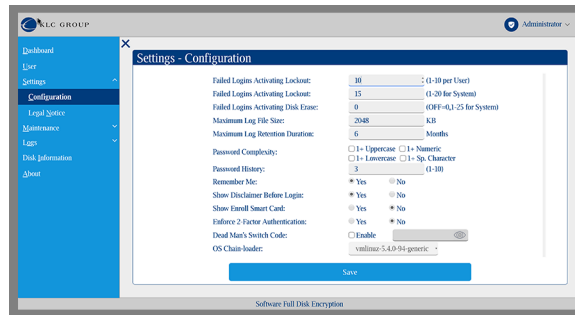
A custom disclaimer can be displayed before or after the user authentication.



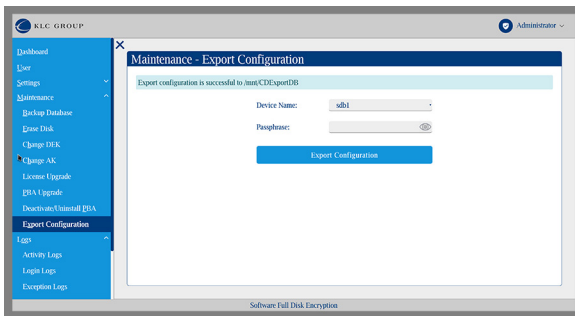
KrypTr features an easy-to-use management console for setup and administration.



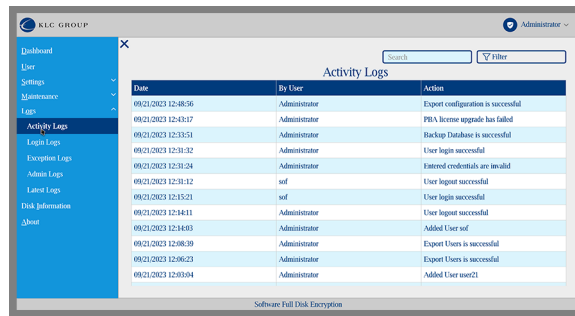
Four different user roles can be set up with 3 forms of authentication: user/pass, smart card, and 2FA.



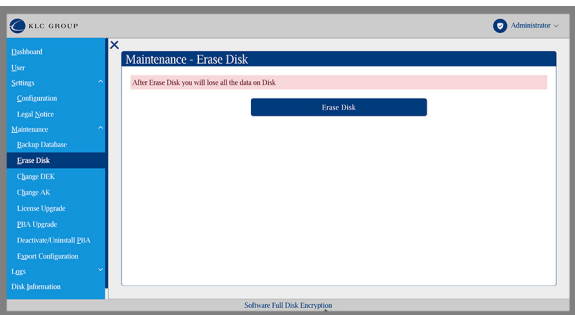
User and system settings are highly configurable from one easy to use location.



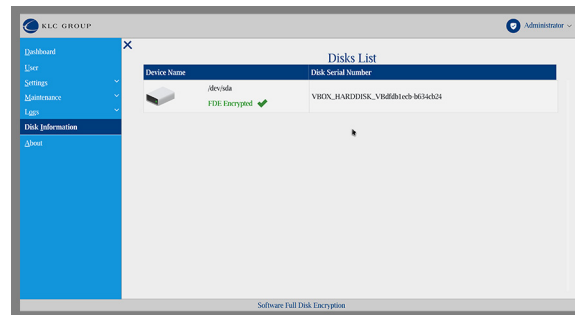
Easy upgrading and exporting of configurations for scalable deployment makes CipherDriveOne the choice of many US and NATO customers.



Detailed logging and event data is available to Administrators and Security Officers.



Administrative and rules-based crypto erase can be implemented to remove data instantly and permanently.



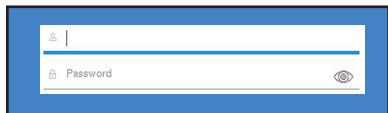
Visual confirmation of the hard drive(s) in the system and the one(s) that are protected by KrypTr.

Technical Specifications

CipherDriveOne meets the NSA's Commercial National Security Algorithm Suite (CNSA) suite for DAR

Security Suite	CNSA Suite Standards	Specifications
CONFIDENTIALITY (ENCRYPTION)	AES-256	FIPS PUB 197
AUTHENTICATION (DIGITAL SIGNATURE)	RSA 3072 (MINIMUM)	FIPS PUB 186-4
INTEGRITY (HASHING)	SHA-384	FIPS PUB 180-4
CAN PROTECT	UP TO TOP SECRET	----

Authentication Acquisition (AA) - Single, 2FA & MFA



Username / Password



Smart Card
CAC using PIV



Yubikey
PIV



USB
Hashed Secret
(Stealth Version Only)

Encryption Engine (EE) - For Windows and Linux



Windows 10/11



RHEL 8/9

The software-based encryption engine for CipherDriveOne KrypTr is available for Windows 10 & 11 and RedHat Version 8 & 9. Designed using AES 256-bit strong encryption and enhanced memory threading for speed, KrypTr is a technology leader in software full disk encryption for classified networks.

Hardware Agnostic - CipherDriveOne Recommended Hardware Vendors

ADVANTECH

 SEAGATE

GOVERNMENT
SOLUTIONS

 MEMKOR

CipherDriveOne Krypter - Easy to Use



Step 1: At power off, CipherDriveOne locks the harddrive(s)



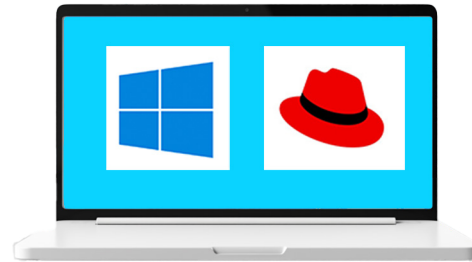
Step 2: At pre-boot, a custom disclaimer can be displayed.



Step 3: CipherDriveOne asks for authentication.

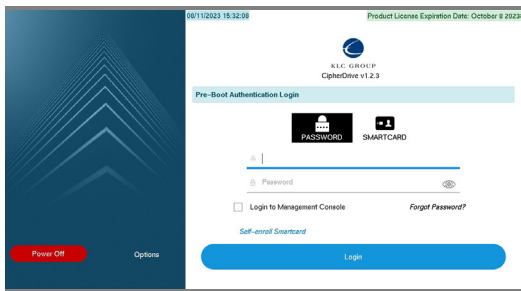


Step 4: A successful authentication will unlock the harddrive(s) and the system will soft reboot or chainboot to the operating system.



Step 5: The operating system or thin client loads. If the system is turned off or the harddrive(s) removed, they are locked and data protected using AES-256 bit encryption

CipherDriveOne Unified Encryption Products



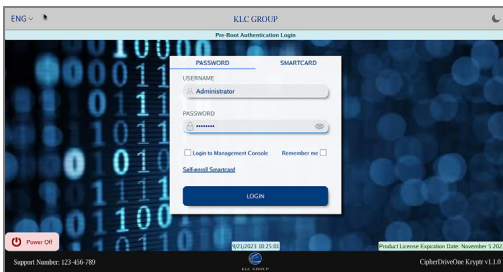
CipherDriveOne
(Single Disk HWFDE)



CipherDriveOne Plus
(Multi-Disk HWFDE)



CipherDriveOne Stealth
(Remote / UAV HWFDE)



CipherDriveOne Krypter
(Single and Multi-disk SWFDE)

CipherDriveOne™ is Common Criteria certified and on the NSA's CSFC listing for meeting the Data-at-Rest Capability Package.



KLC Group LLC
1900 Camden Ave.
San Jose, CA 95124
1-408-614-1414
sales@klc-group.com

©2023 CipherDriveOne & KLC Group, LLC. All product names, images, trademarks and registered trademarks are property of their respective owners. www.cipherdriveone.com