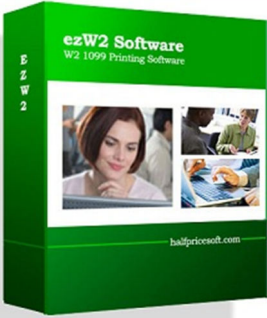


How To Fill Out And File IRS Form W2C

As an employer, you are required to print W-2 forms for your employees and file w-2 form to government. If you discover an error, you need to file Forms W-2c (Corrected Wage and Tax Statement) and W-3c (Transmittal of Corrected Wage and Tax Statement) as soon as possible..

To correct a Form W-2 you have already submitted, you will need to file a Form W-2c with a separate Form W-3c for each year requiring correction. You need to file a Form W-3c whenever you file a Form W-2c, even if you are only filing a Form W-2c to correct an employee's name or Social Security number (SSN).



If you do not have this W2c software, [ezW2Correction](#), installed, you can download it for free from [halfpricesoft.com](#). No registration needed and no obligation. You can follow the step by step online instructions to finish the installation in minutes

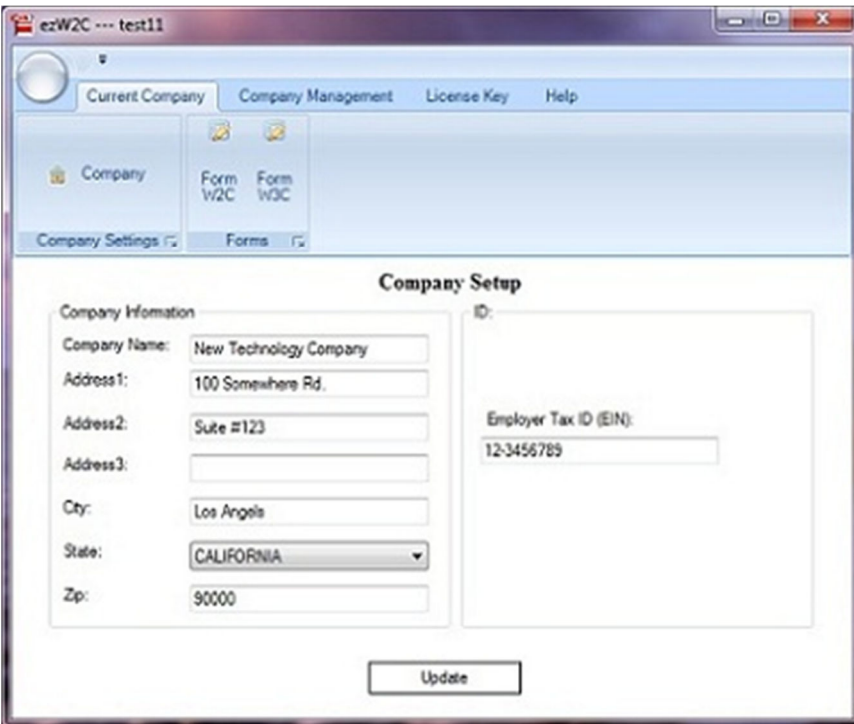
This W-2C software is compatible with Windows 8.1 system, 32-bit or 64-bit. It can run on Windows 8, 7, XP, Me, 2003 and Vista system too.

[Download Now](#) [Buy Now](#)

Below are the steps on how to prepare and print W-2c and W-3c quickly and easily with [ezW2Correction software](#). [ezW2Correction software](#) is approved by SSA to print all W-2c forms and W-3 on the white blank paper.

Step 1: Start W-2c software and set up company

Start ezW2Correction and click the top menu "Current Company->Company". You need to enter the general company information for w-2c, such as Company Name, Address, Tax ID and others.

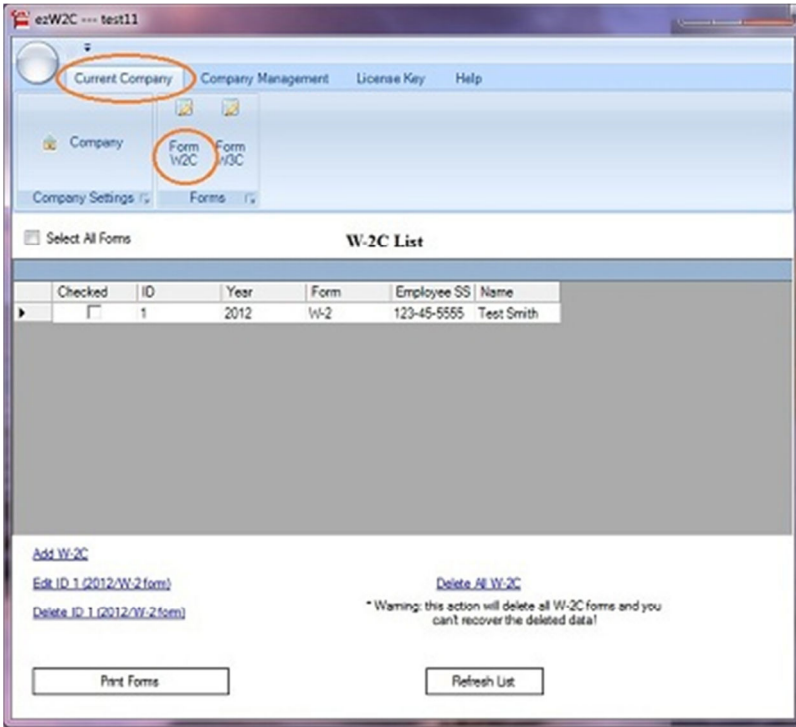


Employer information setup (click image to enlarge)

Step 2: Edit and Print Your W-2c forms

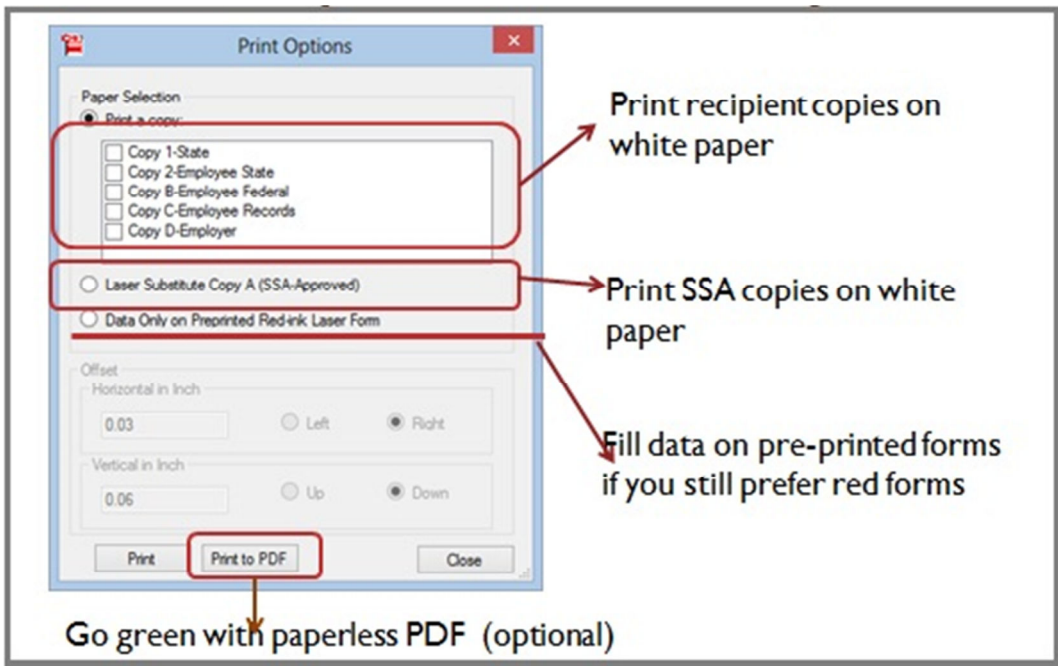
You can click the top menu “Current Company->Form W-2c” to view w-2c form list. You can click the button “Add W-2c” form to add a new form.

ezW2Correction is approved by SSA to print W-2c form copy A, B, C, D, 1 and 2 on blank white paper. If you prefer the traditional red form, it can fill data on red form too.



W2c form list(click image to enlarge)

44444 For Official Use Only OMB No. 1545-0048		c Tax year Form corrected <input type="checkbox"/> / <input checked="" type="checkbox"/> W-2		d Employee's correct SSN <input type="text"/>	
a Employer's name, address, and ZIP code New Technology Company 100 Somewhere Rd. Suite #123 Los Angeles, CA 90000		e Corrected SSN and/or name (Check this box and complete boxes f and/or g if incorrect on form previously filed) <input type="checkbox"/> Complete boxes f and/or g only if incorrect on form previously filed <input checked="" type="checkbox"/> f Employee's previously reported SSN <input type="text"/>			
b Employer's Federal EIN 12-3456789		g Employee's previously reported name <input type="text"/>			
Note: Only complete any fields that are being corrected (exception: for corrections involving MQGQ, see the instructions for Forms W-2c and W-3c, boxes c and d)					
h Employee's first name and initial Last name Suffix <input type="text"/> <input type="text"/> <input type="text"/>					
i Employee's address and ZIP code <input type="text"/>					
Previously reported 1 Wages, tips, other compensation <input type="text"/>		Correct information 1 Wages, tips, other compensation <input type="text"/>		Previously reported 2 Federal income tax withheld <input type="text"/>	
Correct information 2 Federal income tax withheld <input type="text"/>		Previously reported 3 Social security wages <input type="text"/>		Correct information 3 Social security wages <input type="text"/>	
Previously reported 4 Social security tax withheld <input type="text"/>		Correct information 4 Social security tax withheld <input type="text"/>		Previously reported 5 Medicare wages and tips <input type="text"/>	
Correct information 5 Medicare wages and tips <input type="text"/>		Previously reported 6 Medicare tax withheld <input type="text"/>		Correct information 6 Medicare tax withheld <input type="text"/>	
Previously reported 7 Social security tips <input type="text"/>		Correct information 7 Social security tips <input type="text"/>		Previously reported 8 Allocated tips <input type="text"/>	
Correct information 8 Allocated tips <input type="text"/>		Previously reported 9 Advance EIC payment <input type="text"/>		Correct information 9 Advance EIC payment <input type="text"/>	
Previously reported 10 Dependent care benefits <input type="text"/>		Correct information 10 Dependent care benefits <input type="text"/>		Previously reported 11 Nonqualified plans <input type="text"/>	
Correct information 11 Nonqualified plans <input type="text"/>		Previously reported 12a See instructions for box 12 <input type="text"/>		Correct information 12a See instructions for box 12 <input type="text"/>	
Previously reported 12b <input type="text"/>		Correct information 12b <input type="text"/>		Previously reported 12c <input type="text"/>	
Correct information 12c <input type="text"/>		Previously reported 12d <input type="text"/>		Correct information 12d <input type="text"/>	
Previously reported 12e <input type="text"/>		Correct information 12e <input type="text"/>		Previously reported 12f <input type="text"/>	
Correct information 12f <input type="text"/>		Previously reported 12g <input type="text"/>		Correct information 12g <input type="text"/>	
Previously reported 12h <input type="text"/>		Correct information 12h <input type="text"/>		Previously reported 12i <input type="text"/>	
Correct information 12i <input type="text"/>		Previously reported 12j <input type="text"/>		Correct information 12j <input type="text"/>	
Previously reported 12k <input type="text"/>		Correct information 12k <input type="text"/>		Previously reported 12l <input type="text"/>	
Correct information 12l <input type="text"/>		Previously reported 12m <input type="text"/>		Correct information 12m <input type="text"/>	
Previously reported 12n <input type="text"/>		Correct information 12n <input type="text"/>		Previously reported 12o <input type="text"/>	
Correct information 12o <input type="text"/>		Previously reported 12p <input type="text"/>		Correct information 12p <input type="text"/>	
Previously reported 12q <input type="text"/>		Correct information 12q <input type="text"/>		Previously reported 12r <input type="text"/>	
Correct information 12r <input type="text"/>		Previously reported 12s <input type="text"/>		Correct information 12s <input type="text"/>	
Previously reported 12t <input type="text"/>		Correct information 12t <input type="text"/>		Previously reported 12u <input type="text"/>	
Correct information 12u <input type="text"/>		Previously reported 12v <input type="text"/>		Correct information 12v <input type="text"/>	
Previously reported 12w <input type="text"/>		Correct information 12w <input type="text"/>		Previously reported 12x <input type="text"/>	
Correct information 12x <input type="text"/>		Previously reported 12y <input type="text"/>		Correct information 12y <input type="text"/>	
Previously reported 12z <input type="text"/>		Correct information 12z <input type="text"/>		Previously reported 13a <input type="text"/>	
Correct information 13a <input type="text"/>		Previously reported 13b <input type="text"/>		Correct information 13b <input type="text"/>	
Previously reported 13c <input type="text"/>		Correct information 13c <input type="text"/>		Previously reported 13d <input type="text"/>	
Correct information 13d <input type="text"/>		Previously reported 13e <input type="text"/>		Correct information 13e <input type="text"/>	
Previously reported 13f <input type="text"/>		Correct information 13f <input type="text"/>		Previously reported 13g <input type="text"/>	
Correct information 13g <input type="text"/>		Previously reported 13h <input type="text"/>		Correct information 13h <input type="text"/>	
Previously reported 13i <input type="text"/>		Correct information 13i <input type="text"/>		Previously reported 13j <input type="text"/>	
Correct information 13j <input type="text"/>		Previously reported 13k <input type="text"/>		Correct information 13k <input type="text"/>	
Previously reported 13l <input type="text"/>		Correct information 13l <input type="text"/>		Previously reported 13m <input type="text"/>	
Correct information 13m <input type="text"/>		Previously reported 13n <input type="text"/>		Correct information 13n <input type="text"/>	
Previously reported 13o <input type="text"/>		Correct information 13o <input type="text"/>		Previously reported 13p <input type="text"/>	
Correct information 13p <input type="text"/>		Previously reported 13q <input type="text"/>		Correct information 13q <input type="text"/>	
Previously reported 13r <input type="text"/>		Correct information 13r <input type="text"/>		Previously reported 13s <input type="text"/>	
Correct information 13s <input type="text"/>		Previously reported 13t <input type="text"/>		Correct information 13t <input type="text"/>	
Previously reported 13u <input type="text"/>		Correct information 13u <input type="text"/>		Previously reported 13v <input type="text"/>	
Correct information 13v <input type="text"/>		Previously reported 13w <input type="text"/>		Correct information 13w <input type="text"/>	
Previously reported 13x <input type="text"/>		Correct information 13x <input type="text"/>		Previously reported 13y <input type="text"/>	
Correct information 13y <input type="text"/>		Previously reported 13z <input type="text"/>		Correct information 13z <input type="text"/>	
Previously reported 14 <input type="text"/>		Correct information 14 <input type="text"/>		Previously reported 15 State <input type="text"/>	
Correct information 15 State <input type="text"/>		Previously reported 16 State <input type="text"/>		Correct information 16 State <input type="text"/>	
Previously reported Employer's state ID number <input type="text"/>		Correct information Employer's state ID number <input type="text"/>		Previously reported Employer's state ID number <input type="text"/>	
Correct information Employer's state ID number <input type="text"/>		Previously reported Employer's state ID number <input type="text"/>		Correct information Employer's state ID number <input type="text"/>	
Previously reported 16 State wages, tips, etc. <input type="text"/>		Correct information 16 State wages, tips, etc. <input type="text"/>		Previously reported 17 State wages, tips, etc. <input type="text"/>	
Correct information 17 State wages, tips, etc. <input type="text"/>		Previously reported 18 State wages, tips, etc. <input type="text"/>		Correct information 18 State wages, tips, etc. <input type="text"/>	
Previously reported 17 State income tax <input type="text"/>		Correct information 17 State income tax <input type="text"/>		Previously reported 19 Local wages, tips, etc. <input type="text"/>	
Correct information 19 Local wages, tips, etc. <input type="text"/>		Previously reported 20 Local wages, tips, etc. <input type="text"/>		Correct information 20 Local wages, tips, etc. <input type="text"/>	
Previously reported 19 Local income tax <input type="text"/>		Correct information 19 Local income tax <input type="text"/>		Previously reported 21 Local income tax <input type="text"/>	
Correct information 21 Local income tax <input type="text"/>		Previously reported 22 Local income tax <input type="text"/>		Correct information 22 Local income tax <input type="text"/>	
Previously reported 20 Locality name <input type="text"/>		Correct information 20 Locality name <input type="text"/>		Previously reported 23 Locality name <input type="text"/>	
Correct information 23 Locality name <input type="text"/>		Previously reported 24 Locality name <input type="text"/>		Correct information 24 Locality name <input type="text"/>	
Previously reported 21 Locality name <input type="text"/>		Correct information 21 Locality name <input type="text"/>		Previously reported 25 Locality name <input type="text"/>	
Correct information 25 Locality name <input type="text"/>		Previously reported 26 Locality name <input type="text"/>		Correct information 26 Locality name <input type="text"/>	
Previously reported 22 Locality name <input type="text"/>		Correct information 22 Locality name <input type="text"/>		Previously reported 27 Locality name <input type="text"/>	
Correct information 27 Locality name <input type="text"/>		Previously reported 28 Locality name <input type="text"/>		Correct information 28 Locality name <input type="text"/>	
Previously reported 23 Locality name <input type="text"/>		Correct information 23 Locality name <input type="text"/>		Previously reported 29 Locality name <input type="text"/>	
Correct information 29 Locality name <input type="text"/>		Previously reported 30 Locality name <input type="text"/>		Correct information 30 Locality name <input type="text"/>	
Previously reported 24 Locality name <input type="text"/>		Correct information 24 Locality name <input type="text"/>		Previously reported 31 Locality name <input type="text"/>	
Correct information 31 Locality name <input type="text"/>		Previously reported 32 Locality name <input type="text"/>		Correct information 32 Locality name <input type="text"/>	
Previously reported 25 Locality name <input type="text"/>		Correct information 25 Locality name <input type="text"/>		Previously reported 33 Locality name <input type="text"/>	
Correct information 33 Locality name <input type="text"/>		Previously reported 34 Locality name <input type="text"/>		Correct information 34 Locality name <input type="text"/>	
Previously reported 26 Locality name <input type="text"/>		Correct information 26 Locality name <input type="text"/>		Previously reported 35 Locality name <input type="text"/>	
Correct information 35 Locality name <input type="text"/>		Previously reported 36 Locality name <input type="text"/>		Correct information 36 Locality name <input type="text"/>	
Previously reported 27 Locality name <input type="text"/>		Correct information 27 Locality name <input type="text"/>		Previously reported 37 Locality name <input type="text"/>	
Correct information 37 Locality name <input type="text"/>		Previously reported 38 Locality name <input type="text"/>		Correct information 38 Locality name <input type="text"/>	
Previously reported 28 Locality name <input type="text"/>		Correct information 28 Locality name <input type="text"/>		Previously reported 39 Locality name <input type="text"/>	
Correct information 39 Locality name <input type="text"/>		Previously reported 40 Locality name <input type="text"/>		Correct information 40 Locality name <input type="text"/>	
Previously reported 29 Locality name <input type="text"/>		Correct information 29 Locality name <input type="text"/>		Previously reported 41 Locality name <input type="text"/>	
Correct information 41 Locality name <input type="text"/>		Previously reported 42 Locality name <input type="text"/>		Correct information 42 Locality name <input type="text"/>	
Previously reported 30 Locality name <input type="text"/>		Correct information 30 Locality name <input type="text"/>		Previously reported 43 Locality name <input type="text"/>	
Correct information 43 Locality name <input type="text"/>		Previously reported 44 Locality name <input type="text"/>		Correct information 44 Locality name <input type="text"/>	
Previously reported 31 Locality name <input type="text"/>		Correct information 31 Locality name <input type="text"/>		Previously reported 45 Locality name <input type="text"/>	
Correct information 45 Locality name <input type="text"/>		Previously reported 46 Locality name <input type="text"/>		Correct information 46 Locality name <input type="text"/>	
Previously reported 32 Locality name <input type="text"/>		Correct information 32 Locality name <input type="text"/>		Previously reported 47 Locality name <input type="text"/>	
Correct information 47 Locality name <input type="text"/>		Previously reported 48 Locality name <input type="text"/>		Correct information 48 Locality name <input type="text"/>	
Previously reported 33 Locality name <input type="text"/>		Correct information 33 Locality name <input type="text"/>		Previously reported 49 Locality name <input type="text"/>	
Correct information 49 Locality name <input type="text"/>		Previously reported 50 Locality name <input type="text"/>		Correct information 50 Locality name <input type="text"/>	
Previously reported 34 Locality name <input type="text"/>		Correct information 34 Locality name <input type="text"/>		Previously reported 51 Locality name <input type="text"/>	
Correct information 51 Locality name <input type="text"/>		Previously reported 52 Locality name <input type="text"/>		Correct information 52 Locality name <input type="text"/>	
Previously reported 35 Locality name <input type="text"/>		Correct information 35 Locality name <input type="text"/>		Previously reported 53 Locality name <input type="text"/>	
Correct information 53 Locality name <input type="text"/>		Previously reported 54 Locality name <input type="text"/>		Correct information 54 Locality name <input type="text"/>	
Previously reported 36 Locality name <input type="text"/>		Correct information 36 Locality name <input type="text"/>		Previously reported 55 Locality name <input type="text"/>	
Correct information 55 Locality name <input type="text"/>		Previously reported 56 Locality name <input type="text"/>		Correct information 56 Locality name <input type="text"/>	
Previously reported 37 Locality name <input type="text"/>		Correct information 37 Locality name <input type="text"/>		Previously reported 57 Locality name 	



Print W-2c Form option (click image to enlarge)

Step 4: Mail W2C Forms

You need to distribute the W-2c recipient copies to your employees. You also need to mail the W2c copy A and W3c to SSA (Social Security Administration)

[ezW2Correction](#) W-2c and W-3c software can support unlimited companies, forms and recipients with no extra cost. If you have multiple companies, you can click the top menu Company Management to add a new company, then repeat step 2 to step 4 to print forms.