

Evidence-Based Communication with Critically Ill Older Adults



JiYeon Choi, PhD, RN^a, Judith A. Tate, PhD, RN^{b,*}

KEYWORDS

- Communication • Mechanical ventilation
- Augmentative and alternative communication • Communication disorders
- Patient-centered care • Patient participation • Older adults

KEY POINTS

- Mechanical ventilation prohibits speech in critically ill patients.
- Being unable to communicate is frightening, frustrating and stressful for critically ill patients.
- Evidence-based methods to assess communication ability and select strategies to improve patient-clinician communication are important components of patient-centered care.

NATURE OF THE PROBLEM

Effective communication is the foundation of patient-centered care. Effective communication occurs when both the sender and receiver of messages achieve shared meaning and understanding.¹ Patient-centered communication builds on effective communication and includes patient perspectives, preferences, and choices. Furthermore, the patient's social and psychological context is valued as shared decision-making unfolds.²

The value of effective communication between health care providers and patients is acknowledged in health care accreditation standards as both a quality metric and as a fundamental patient right.³ Communication failure is a critical factor in medical errors and in patient safety incidents.^{4,5} Patients with communication impairments are at threefold risk for adverse events.⁴ Despite the importance of communication to

^a Yonsei University College of Nursing, Mo-Im Kim Nursing Research Institute, 50-1 Yonsei-Ro, Seodaemun-Gu, Seoul 03722, Korea; ^b Center of Healthy Aging, Self-Management and Complex Care, Undergraduate Nursing Honors Program, The Ohio State University College of Nursing, 386 Newton Hall, 1585 Neil Avenue, Columbus, OH 43210, USA

* Corresponding author.

E-mail address: tate.230@osu.edu

improve patient care and outcomes, health care providers receive little or no training in evidence-based approaches in communication assessment and accommodation.⁶

In addition to preexisting communication disorders, patients may acquire communication impairments because of therapeutic interventions, such as mechanical ventilation, sedation, and neuromuscular blockade during critical illness. Endotracheal intubation or tracheostomy prevents patients' ability to vocalize, which is frightening, frustrating, and stressful.^{7,8} Communication difficulty is one of the most common and most bothersome symptoms reported by patients undergoing mechanical ventilation (MV).^{7,9–13} The inability to speak limits accurate identification of symptoms and can restrict participation in treatment decision-making.^{7,8,11,12,14–16} The inability to communicate contributes to physical and emotional distress and predicts psychological distress in the post-intensive care unit (ICU) period.^{17,18} Despite known communication difficulties in critically ill patients, interventions to support nonvocal patients with critical illness are poorly and inconsistently applied.^{13,19,20}

Older adults, defined as older than 65 years, comprise approximately 50% of ICU admissions annually and as the aging population increases, this percentage is expected to grow.²¹ Critically ill older adults present communication challenges based on their unique vulnerabilities such as burden of underlying chronic conditions, sensory impairment, frailty, and cognitive dysfunction.^{22–26} Most ICU health care providers learn how to communicate with impaired patients by trial and error or by observing others.⁶

This article presents an overview of evidence-based strategies to improve communication during the critical illness with older adults who have preexisting and acquired communication disorders due to hearing loss, vision impairment, limited English proficiency, health literacy, cognition, and limited upper extremity mobility.

Epidemiology of Preexisting Communication Disorders

- One in 6 people in the United States have a communication disorder.²⁷
- Of these, 28 million have communication disorders associated with hearing loss.²⁸
- 14 million people have disorders of speech, voice, and/or language not associated with hearing loss.²⁹
- 90% of adults older than 50 require corrective lenses³⁰
- 1 in 3 adults older than 65 has a hearing loss²⁴

Communication disorders often occur concomitantly with other chronic disorders, such as diabetes, heart failure, stroke, renal disease, and dementia, contributing to a decreased ability to engage in self-management and resulting in high rates of disability.^{30–35}

Hearing loss

Hearing loss is a common but underrecognized and undertreated problem in older adults.^{36,37} Few studies provide direction for improving communication with patients who have hearing impairment.^{33,38} Even with mild hearing loss, low levels of ambient noise competes with one-on-one communication.³⁸ Higher than normal noise levels in the ICU compound the effects of hearing loss.³⁹ During hospitalization, hearing aids are often removed and sent home because of their cost, which worsens communication and limits patient engagement.^{25,40} Preexisting hearing impairment is associated with delirium and poor recovery following an ICU stay.^{41,42} The use of hearing aids in the ICU both reduces the incidence of delirium and facilitates mobility.⁴³

Health care professionals are often unaware of patients' hearing impairment and routine screening for hearing loss at the bedside lacks sensitivity.²⁶ Clinicians report

difficulty communicating with patients with hearing loss, yet few receive formal training to develop skills necessary to resolve communication barriers.^{38,44} Hearing loss is not always documented in the medical record and furthermore, few health care professionals are aware of how to access services for patients with hearing loss.⁴⁴

A hearing assessment is necessary for all older patients admitted to the ICU. Evidence of hearing loss may be subtle and overlap with signs of other problems such as delirium. For instance, patients with hearing loss may not respond to verbal stimulus, which may be confused with inattention. Patients with hearing loss may be more responsive when they can see the communication partner's face. Clinicians may compound communication problems by rapid speech and/or use of medical jargon.³⁸

An audiologist should evaluate patients with suspected or diagnosed preexisting hearing loss and can recommend simple strategies to accommodate patients with uncorrected hearing loss. Audiologists can troubleshoot problems with hearing aids and can provide brief bedside instructions to staff for appropriate use and care of hearing aids. In addition, audiologists can provide temporary hearing amplification devices if patients' own hearing aids are not available or if the hearing loss is uncorrected by hearing aids. Hearing aids should be available and inserted during the day to facilitate comprehension.^{38,43,44}

Vision impairment

Given the high rates of visual impairment in all age groups and the increased prevalence of vision problems with aging, many patients require corrective lenses for reading or for distance vision correction. In older adults, visual impairment is associated with ICU delirium and poor recovery outcomes.⁴¹ During hospitalization, patients are often expected to review educational materials, consent forms, and personal messages. Despite this, corrective lenses are not frequently made available for patients in the ICU.⁴⁵ Corrective lenses provide patients a way to make sense of their environment, identify caregivers, and compensate for hearing loss using lip-reading.

Limited English proficiency

Older adults in whom English is not their primary language may experience language barriers, making communication as well as comprehending medical terminology more difficult. Currently 1 in 15 adults are identified as Limited English Proficient (LEP) and with projected increases in immigration, this number is expected to increase.⁴⁶⁻⁴⁸ Fifteen million older adults are LEP resulting in poor health and disparate health care access.^{48,49} For any patients who are LEP, language access such as interpreter services and written materials in patients' native language are mandated now by the Affordable Care Act.

Cognitive impairment

Many patients with critical illness experience changes in their level of consciousness. Changes in cognitive function or delirium can result in changes in communication initiation and symptom communication.¹⁶ Use of a standardized assessment tool such as the Confusion Assessment Method - ICU or Intensive Care Delirium Screening Checklist provide important data about the presence of delirium, acute confusion experienced by many ICU patients and common in older adults.^{50,51} Features common to delirium that may influence patient communication are impaired sustained attention, distorted thinking, inability to follow verbal commands, and changes in level of consciousness.^{50,51}

Communicating with older adults may be further complicated by preexisting cognitive impairment. Impaired attention and focus are hallmark features of both delirium

and dementia. Patients with delirium superimposed on dementia may have unpredictable communication patterns.⁵² For instance, patients with dementia may have verbal fluency difficulties that the patient with delirium may not exhibit. Patients with dementia have slower cognitive processing speed making it difficult to understand and react to verbal input. Patients receiving sedating medications may also exhibit slower cognitive processing speed.

Because many patients experience delirium during their ICU stay, communication strategies directed at key features of delirium are imperative. To compensate for inattention, the clinician should initiate attention by facing the patient, establishing eye contact, and maintaining the face-to-face position.^{53,54} Locking eyes can provide useful information for both the speaker and the patient.⁵³ The speaker can monitor patient engagement while the patient can see the speaker's mouth movement. Delays in comprehension may be due to cognitive impairment, sedation, fatigue, neurologic deficits, or hearing impairment.⁵⁵ Slowing the clinician's pace of speech and limiting ideas to one at a time can help to overcome delays in processing.⁵⁶ Increasing the duration of pauses between the sent message and the patient's response will allow the patient time to formulate a response. This technique can be useful in cases in which patients have motor slowing, as seen in Parkinson disease. Asking patients to confirm the sender's message or repeat the message may increase message accuracy and retention.⁵⁶

Limited upper motor ability

ICU-acquired weakness (ICUAW) is profound neuromuscular dysfunction associated with critical illness and its treatment.^{57,58} Preexisting functional impairment or frailty, common in older adults, is a risk factor for development of ICUAW.⁵⁷ Prolonged mechanical ventilation, sedation, and immobility are common and increase risk for ICUAW.⁵⁸ Patients with ICUAW exhibit decreased strength, muscle atrophy and decreased muscle mass, fatigue, weakness, and poor grip strength.⁵⁹ Effective communication strategies are limited by ICUAW. For instance, to write a message, patients should be able to sit upright, holding their head up, grip the pen, and produce a legible written message, ICUAW may prohibit use of writing as a strategy.

Pointing or gesturing is a common method of augmenting communication efforts and is an essential component for use of many communication strategies. If the patient can point, supportive communication strategies such as alphabet boards, picture boards or touch screens may be appropriate. Unfortunately, patients with critical illness may experience upper extremity edema, which can impair the ability to point or gesture. Use of sedating medications or paralytics will prevent use of pointing and writing. In addition, vascular access may make it difficult to move their extremities.^{60,61}

Augmentative and Alternative Communication Strategies

Augmentative and alternative communication (AAC) strategies are a set of tools, technologies, and approaches used to overcome communication challenges that can be used to improve communication for voiceless patients in the ICU.⁶² AAC strategies were originally developed to assist patients with acquired neurologic problems to communicate deficits but have been adapted by communication scientists to meet the needs of critically ill patients.⁶³ AAC strategies include unaided strategies (gestures, facial expressions, mouthing words), low-tech strategies (writing, letter boards) and high-tech strategies (computer-assisted devices, apps, speech-generating devices), as seen in **Table 1**.^{19,63}

Adoption of AAC strategies in the ICU can lead to improved patient satisfaction with communication.^{6,64,65} There are a variety of evidence-based methods to facilitate the

Table 1 Augmentative and alternative communication strategy classifications	
Unaided <i>Nonspoken, natural</i>	Aided <i>Require external support</i>
Gestures	Communication boards
Facial expression	Handheld devices
Body language	Electronic devices
Sign language	
Low-tech strategies Strategy that does not require battery operated or electronic device	High-tech strategies Require energy source, electronic
Writing	Speech-generating devices
Picture boards	Communication Apps
Letter boards	VidaTalk
	LiveVoice
	Speak for Myself
	ICUTalk

use of AAC, including access to communication materials, and improving clinician knowledge and skills.^{6,19,66–68} Barriers to use of AAC in the ICU include competing priorities for clinicians, as using AAC takes time away from other clinical activities.^{6,67–69} Many clinicians limit communication exchanges with patients, as they have experienced frustration with communication breakdowns with nonspeaking patients.⁷⁰

Low-tech strategies

Low-tech AAC include methods that enhance communication efforts using strategies and tools that do not require battery-operated devices. Communication boards include symbols, letters, pictures, icons, or a combination to facilitate messages by pointing by the patient or the clinician, as seen in [Fig. 1](#). Communication boards can increase communication effectiveness and speed, decrease frustration, and improve patient satisfaction in communication with clinicians.^{71,72} Communication boards, although the most restrictive option, are inexpensive, downloadable, and can be constructed on paper or purchased.

High-tech strategies

High-tech strategies include devices that use an electronic interface, as seen in [Fig. 2](#).^{64,73,74} Although more costly than low-tech strategies, some high-tech devices are able to generate speech in response to patients touching letters or symbols on the screen.^{64,73–75} Some high-tech AACs use an application downloaded onto an electronic tablet.⁷⁶ Using the lettering feature enables patients to spell messages. To optimize effectiveness, patients should be alert and cognitively intact, unrestrained, and have the muscle strength and ability to point to icons.

Voice-enabling strategies

Several methods have been tested to enable speech generation by patients on MV. In their review of communication strategies for critically ill patients, Ten Hoorn and colleagues constructed an algorithm of voice-enabling strategies to guide clinical decision making when considering individualized communication interventions.⁷⁷

The talking trach was designed to enable patients to generate vocal tones in a whisper, as seen in [Fig. 3](#).⁷⁸ The cuff on the talking trach remains inflated, enabling



Fig. 1. Using low-tech communication board.

ventilation and vocalization as separate and safe functions. A talking trach tube necessitates a change in tube conferring a degree of risk of an airway exchange. Issues with secretion management with this device also make it a less desirable method.^{78,79}

An inline speaking valve is a one-way airflow valve to enable vocalization. Use of an inline speaking valve requires deflation of the tracheostomy tube or the presence of a cuffless tracheostomy. The Passy-Muir valve improves vocal communication and cough, as illustrated in Fig. 4.⁷⁹ Use of the Passy-Muir valve is precluded in patients

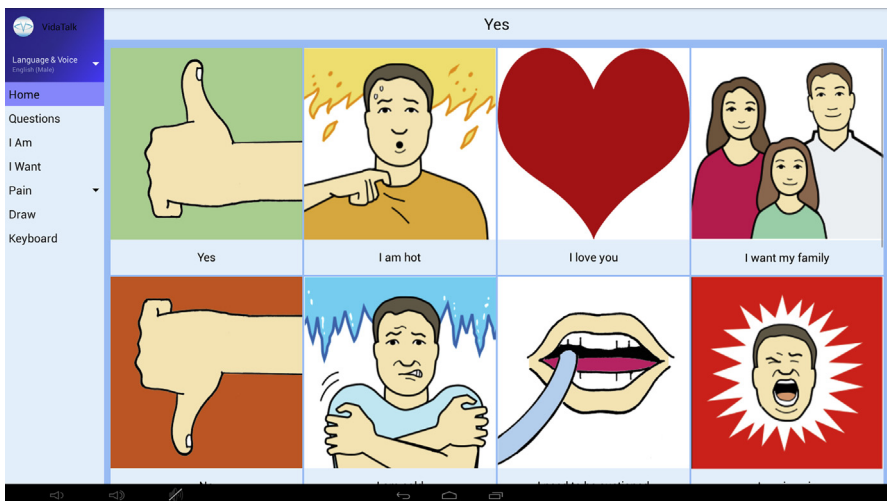


Fig. 2. Screen from Vidatalk application. (Courtesy of Vidatalk)

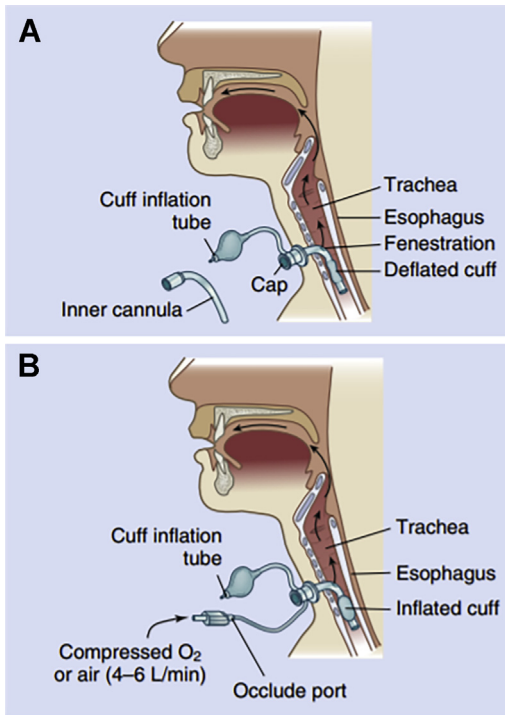


Fig. 3. (A, B) Talking Trach. (A) Fenestrated tracheostomy tube with cuff deflated, inner cannula removed, and tracheostomy tube capped to allow air to pass over the vocal cords. (B) Speaking tracheostomy tube. One tube is used for cuff inflation. (From Mathers, DM. Nursing Management. In: Heitkemper MM, Bucher Lin, Lewis SL, et al. (eds) *Medical-Surgical Nursing: Assessment and Management of Clinical Problems*, Ninth Edition, Philadelphia: Elsevier, 2014; with permission.)

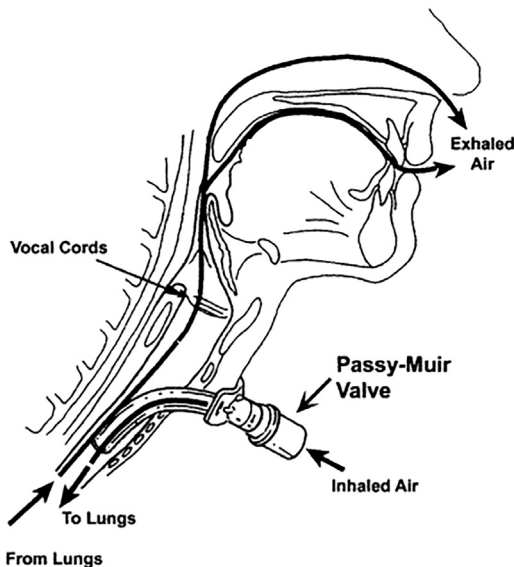


Fig. 4. Passy-Muir valve. (From Hodder RV. A 55-year-old patient with advanced COPD, tracheostomy tube, and sudden respiratory distress. *Chest*. 2002;121(1):279-280. <https://doi.org/10.1378/chest.121.1.279>; with permission.)

with heavy secretions, agitation, inability to maintain ventilation with a deflated cuff, and medical instability.^{79,80} The use of an electrolarynx has been tested in mechanically ventilated patients.⁸¹ Patients rated communication easier with the electrolarynx but its effectiveness was less when the patient experienced weakness.⁸¹ In addition, patients required support for positioning the device and sentence intelligibility remained suboptimal.⁸¹

Communication Decision Support

Critically ill patients and their providers can learn to use communication aids in a systematic manner.^{65,66} The SPEACS-2 algorithm is an evidence-based tool that guides patient assessment, selection of appropriate interventions to improve comprehension, and strategies to improve communication with mechanically ventilated patients, as seen in **Fig. 5**.^{67,68} Using the SPEACS-2 algorithm, communication strategies can be attempted and used based on the patient's abilities and preferences. Communication strategies are not absolute, and as the patient's condition changes, communication approaches can be modified.

Speech Language Pathologists in the Intensive Care Unit

Speech language pathologists (SLPs) are experts in communication science and can be an invaluable resource for communication decisions.⁸² For patients with more complex communication needs, such as those with neurologic disorders, expert consultation with an SLP is warranted.

Family Communication

Families often provide support and advocacy when patients are unable to speak for themselves.⁸³ Families experience distress when they are unable to communicate with the patient.^{10,84,85} Patients on MV often appreciate the efforts of close relatives to understand them while they were unable to speak and families are likewise often interested in learning how to improve communication.^{84,86} Studies have neither rigorously described patient-family communication in the ICU nor systematically tested communication strategies targeting families of the critically ill.

Engaging family members using telehealth

In the ICU setting, effectively engaging family members is essential. Information shared from family members is necessary to integrate data on a patient's medical, psychosocial, and behavioral history relevant to current illness. Support from family members can be represented a variety of ways, from providing silent companionship to actively responding and supporting patients' emotional and social needs.⁸⁶ Family members can be both surrogates and advocates, especially when the patient's communication ability is limited.^{10,83,87,88} Efforts have been made to increase family presence in the ICU settings, such as using extended or open visitation hours and inviting family to participate in daily ICU rounds.^{89,90} However, family presence in the ICU is not always feasible. Decades of efforts to increase family presence in the ICU face a major barrier with the coronavirus 2019 (COVID-19) pandemic. Deprived access to family visits due to COVID-19 not only worsens suffering of patients and families but also adds stress to ICU clinicians.^{91,92}

Telehealth, defined as the use of electronic information and telecommunication technologies to support health services delivery may be a timely solution to continue and improve family engagement for the critically ill.^{93,94} In critical care, telehealth was initially introduced as a tool to reduce disparities in access to critical care workforces in rural areas.^{95,96} Recently, family engagement has proven to be another area that

Low Tech Communication Strategies

STEP 1 – ASSESS

1. COGNITION

Is the patient alert?
 Can they follow commands?
 Can you raise your arm/make a fist?
 Blink your eyes twice.

2. ORAL MOTOR MOVEMENT

Are the patient's mouth movements clear when mouthing speech?
 Count from 1 to 10.
 Tell me about your first job in a sentence.

3. COMPREHENSION

Does the patient need help with comprehension?
 Do they wear glasses/hearing aids?
 Are they available?
 Any language barriers?

4. EXPRESSIVE COMMUNICATION

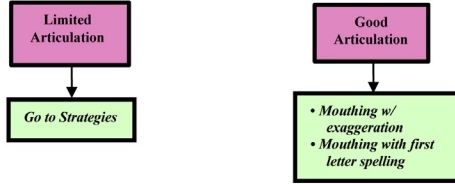
Does the patient have a reliable yes/no signal?
 How does the patient signal yes?
 How does the patient signal no?
 Can the patient point?
 Can the patient write?

Assess language and literacy
 Engage SLP or translation services if non-English speaking or unable to read.

STEP II - PROVIDE COMPREHENSION STRATEGIES

- Hearing Aids/Glasses
- Audiology consult
- Get Attention & Face
- Pause Time
- Clear Yes/No
- Confirm Message
- Procedure Boards
- Written key words
- Nurse Gestures

STEP III – CHOOSE STRATEGY BASED ON ORAL MOTOR SKILL



STEP IV – CHOOSE STRATEGIES FOR EXPRESSIVE COMMUNICATION

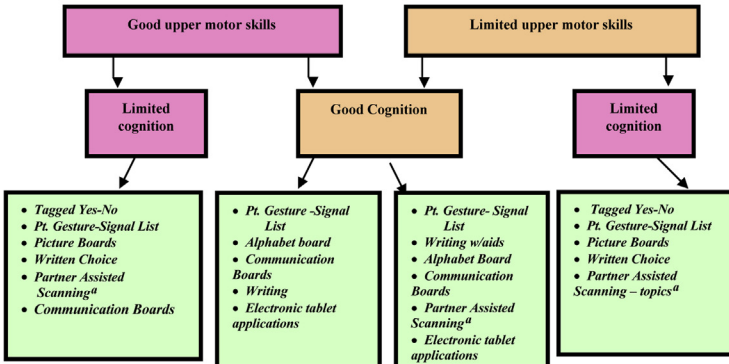


Fig. 5. SPEACS-2 algorithm.^a Consult speech language pathologist (SLP) for complex strategies or if selected strategies are unsuccessful. (©Garret, Happ, Tate 2006 (Revised 2009: SPEACS-2; 2016) R01 HD043988.)

may benefit from telehealth. Telehealth is a solution to help family members maintain connections with patients and participate in both communication and decision making with the health care team.

A simple approach, for example, playing the audio-recorded voice of family members, can benefit both patients and families. Munro and colleagues⁹⁷ developed and pilot-tested a cognitive reorientation intervention to prevent delirium in critically ill patients. In their intervention, family members were instructed to read and record a scripted 2-minute message and the recorded message was played in the patient's room. Reorientation messages include orientation of the patient's current location and

reasons for physical limitations (eg, endotracheal tube). Results of this randomized controlled trial demonstrated preliminary efficacy in reducing delirium.

Video-conferencing and Web-based portals may be the most popular technologies considered for family engagement. Video-conferencing sets up real-time interactions between 2 or more parties, whereas Web-based portals may have conferencing capabilities but also have pre-posted information or patient centered apps, for example, VidaTalk. Various commercial online platforms are now Health Insurance Portability and Accountability Act (HIPAA)-compliant. Despite their potential to promote family engagement, establishing evidence specific to gero-critical care settings is a remaining step for its real-world application. For example, video-conferencing technologies may appear to be an obvious solution to promote real-time engagement of family members in patient visits, ICU clinical team rounds, and family meetings.⁹⁸⁻¹⁰² However, the acceptance by families or clinicians of the use of video conferencing for virtual family rounds, varies.¹⁰³ Most family members and clinicians are supportive of the idea of virtual rounds; however, family members have varying levels of technology literacy and comfort levels. Some clinicians expressed concerns of adding burden to their clinical workload.¹⁰³

Another example of using telehealth to engage family members includes interactive online decision-support programs to guide complex surrogate decision making, such as goals of treatment.^{104,105} Guided by theories addressing both cognitive and emotional aspects of decision making, online decision-support programs have made rapid developments.¹⁰⁴ Although the initial program was mainly based on the cognitive aspects of surrogate decision making, a recent development added a tool to support the emotional and psychological challenges that families experience during decision making.^{104,105} These programs were suggested as an adjunct to help families prepare for complex conversations during in-person meetings with the ICU clinical team.¹⁰⁵

The aforementioned technologies, from the use of a voice recording device to communication and/or decision-aid software, highlight the different media available to improve family engagement in the ICU. In the process of adopting these technologies, attention should also be paid to disparities in access to the technology, digital literacy, and Internet access among the family members. Efforts to resolve these disparities are important to ensure people with fewer resources and access are included.

Box 1

Communication resources

Communication resources

Patient-Provider Communication Organization
<https://www.patientprovidercommunication.org/>

Communication training

https://nucleus.con.ohio-state.edu/media/speacs2/project_desc.htm

Organizations

US Society for Augmentative and Alternative Communication
<https://ussaac.org/>

International Society for Augmentative and Alternative Communication

<https://www.isaac-online.org/english/home/>

American Speech Language Hearing Association

<https://www.asha.org/>

SUMMARY

Losing the ability to speak while on MV can be a frightening and frustrating experience for patients. Effective communication with mechanically ventilated patients is a critical component of patient-centered care. Given the number of older adults in the ICU with preexisting communication disorders and cognitive impairment, older adults are at greater risk for communication breakdown in the ICU. Communication assessment and selection of appropriate strategies should be approached systematically. Additional resources can be found in **Box 1**.

CLINICS CARE POINTS

Recommendations for ICU Practice Change Related to Communication

- *ICU rounds*: During ICU rounds, the clinicians should be able to answer: (1) Is the patient communicating effectively? If yes, using what mechanism? (2) Is a sign posted in the patient's room denoting communication difficulty? (3) Has a speech language pathologist been consulted? If so, what are their recommendations? and (4) Has there been a change in the patient's condition that might affect their communication ability?
- *Documentation*: Nurses should systematically and routinely chart the patient's communication function: (1) How are they communicating overall, and specifically their ability to communicate "yes" and "no"? and (2) Are there changes in patient's condition that might affect their communication ability?
- *Communication plans*: A communication plan should be posted by the patient's bed that lists how the patient is able to both (1) convey thoughts, needs, and symptoms accurately to their providers, and (2) understands what care providers are communicating, including sensory aids (eg, glasses, hearing aids).

DISCLOSURE

JiYeon Choi was supported by National Research Foundation (NRF) of Korea (2019R1F1A1057941). The other author have no conflicts to disclose.

REFERENCES

1. Fleischer S, Berg A, Zimmermann M, et al. Nurse-patient interaction and communication: a systematic literature review. *J Public Health* 2009;17(5):339–53.
2. Slatore CG, Hansen L, Ganzini L, et al. Communication by nurses in the intensive care unit: qualitative analysis of domains of patient-centered care. *Am J Crit Care* 2012;21(6):410–8.
3. JCAHO. Patient-centered communication standards for hospitals. 2011.
4. Bartlett G, Blais R, Tamblyn R, et al. Impact of patient communication problems on the risk of preventable adverse events in acute care settings. *CMAJ* 2008;178(12):1555–62.
5. Hemsley B, Georgiou A, Hill S, et al. An integrative review of patient safety in studies on the care and safety of patients with communication disabilities in hospital. *Patient Educ Couns* 2016;99(4):501–11.
6. Magnus VS, Turkington L. Communication interaction in icu—patient and staff experiences and perceptions. *Intensive Crit Care Nurs* 2006;22(3):167–80.
7. Rotondi AJ, Chelluri L, Sirio C, et al. Patients' recollections of stressful experiences while receiving prolonged mechanical ventilation in an intensive care unit. *Crit Care Med* 2002;30(4):746–52.

8. Guttormson JL, Bremer KL, Jones RM. "Not being able to talk was horrid": a descriptive, correlational study of communication during mechanical ventilation. *Intensive Crit Care Nurs* 2015;31(3):179–86.
9. Nelson JE, Meier DE, Litke A, et al. The symptom burden of chronic critical illness. *Crit Care Med* 2004;32(7):1527–34.
10. Happ MB. Interpretation of nonvocal behavior and the meaning of voicelessness in critical care. *Social Sci Med* 2000;50(9):1247–55.
11. Danielis M, Povoli A, Mattiussi E, et al. Understanding patients' experiences of being mechanically ventilated in the intensive care unit: Findings from a meta-synthesis and meta-summary. *J Clin Nurs* 2020;29(13–14):2107–24.
12. Fink RM, Makic MBF, Poteet AW, et al. The ventilated patient's experience. *Dimensions Crit Care Nurs* 2015;34(5):301–8.
13. Freeman-Sanderson A, Morris K, Elkins M. Characteristics of patient communication and prevalence of communication difficulty in the intensive care unit: an observational study. *Aust Crit Care* 2019;32(5):373–7.
14. Karlsen MMW, Ølnes MA, Heyn LG. Communication with patients in intensive care units: a scoping review. *Nurs Crit Care* 2019;24(3):115–31.
15. Tate JA, Seaman JB, Happ MB. Overcoming barriers to pain assessment: communicating pain information with intubated older adults. *Geriatr Nurs (New York, NY)*. 2012;33(4):310–3.
16. Tate JA, Sereika S, Divirgilio D, et al. Symptom communication during critical illness: the impact of age, delirium, and delirium presentation. *J Gerontol Nurs* 2013;39(8):28–38.
17. Wade DM, Howell DC, Weinman JA, et al. Investigating risk factors for psychological morbidity three months after intensive care: a prospective cohort study. *Crit Care* 2012;16(5):R192.
18. Parker AM, Sricharoenchai T, Rapparla S, et al. Posttraumatic stress disorder in critical illness survivors: a metaanalysis. *Crit Care Med* 2015;43(5):1121–9.
19. Istamboulian L, Rose L, Gorospe F, et al. Barriers to and facilitators for the use of augmentative and alternative communication and voice restorative strategies for adults with an advanced airway in the intensive care unit: a scoping review. *J Crit Care* 2020;57:168–76.
20. Hurtig RR, Downey D. Augmentative and alternative communication in acute and critical care settings. San Diego (CA): Plural Publishing; 2008.
21. Zilberberg MD, de Wit M, Shorr AF. Accuracy of previous estimates for adult prolonged acute mechanical ventilation volume in 2020: Update using 2000–2008 data. *Crit Care Med* 2012;40(1):18–20.
22. Ferrante LE, Pisani MA, Murphy TE, et al. The association of frailty with post-icu disability, nursing home admission, and mortality: a longitudinal study. *Chest*. 2018;153(6):1378–86.
23. He Z, Bian J, Carretta HJ, et al. Prevalence of multiple chronic conditions among older adults in Florida and the United States: Comparative analysis of the one-florida data trust and national inpatient sample. *J Med Internet Res* 2018;20(4): e137.
24. National Institute on Deafness and Other Communication Disorders. Hearing loss and older adults. 2016. Available at: <https://www.nidcd.nih.gov/health/hearing-loss-older-adults>.
25. Funk A, Garcia C, Mullen T. Ce: Original research understanding the hospital experience of older adults with hearing impairment. *AJN The Am J Nurs* 2018;118(6):28–34.

26. Mormer E, Bubb KJ, Alrawashdeh M, et al. Hearing loss and communication among hospitalized older adults: prevalence and recognition. *J Gerontol Nurs* 2020;46(6):34–42.
27. Healthy People.gov. Hearing and other sensory or communication disorders. 2014. Available at: <https://www.healthypeople.gov/2020/topics-objectives/topic/hearing-and-other-sensory-or-communication-disorders>. Accessed July 31, 2020.
28. Hoffman HJ, Dobie RA, Losonczy KG, et al. Declining prevalence of hearing loss in us adults aged 20 to 69 years. *JAMA Otolaryngol Head Neck Surg* 2017;143(3):274–85.
29. Blackwell DL, Lucas JW, Clarke TC. Summary health statistics for us adults: national health interview survey, 2012. *Vital Health Stat Ser 10* 2014;(260):1–161.
30. The National Eye Institute. Eye health data and statistics. 2019. Available at: <https://www.nei.nih.gov/learn-about-eye-health/resources-for-health-educators/eye-health-data-and-statistics>. Accessed July 31, 2020.
31. Flowers HL, Skoretz SA, Silver FL, et al. Poststroke aphasia frequency, recovery, and outcomes: a systematic review and meta-analysis. *Arch Phys Med Rehabil* 2016;97(12):2188–201.e8.
32. Froehlich-Grobe K, Jones D, Businelle MS, et al. Impact of disability and chronic conditions on health. *Disabil Health J* 2016;9(4):600–8.
33. Moore S. Scientific reasons for including persons with disabilities in clinical and translational diabetes research. *J Diabetes Sci Tech* 2012;6(2):236–41.
34. Nantsupawat A, Wichaikhum OA, Abhichartibutra K, et al. Nurses' knowledge of health literacy, communication techniques, and barriers to the implementation of health literacy programs: a cross-sectional study. *Nurs Health Sci* 2020;22(3):577–85.
35. Mirza M, Harrison EA, Roman M, et al. Walking the talk: understanding how language barriers affect the delivery of rehabilitation services. *Disabil Rehabil* 2020;1–14.
36. Goman AM, Reed NS, Lin FR. Addressing estimated hearing loss in adults in 2060. *JAMA Otolaryngol Head Neck Surg* 2017;143(7):733–4.
37. Lin FR, Niparko JK, Ferrucci L. Hearing loss prevalence in the United States. *Arch Intern Med* 2011;171(20):1851–3.
38. Cohen JM, Blustein J, Weinstein BE, et al. Studies of physician-patient communication with older patients: how often is hearing loss considered? A systematic literature review. *J Am Geriatr Soc* 2017;65(8):1642–9.
39. Konkani A, Oakley B. Noise in hospital intensive care units—a critical review of a critical topic. *J Crit Care* 2012;27(5):522.e1-9.
40. Hardin SR. Hearing loss in older critical care patients: participation in decision making. *Crit Care Nurse* 2012;32(6):43–50.
41. Ferrante LE, Pisani MA, Murphy TE, et al. Factors associated with functional recovery among older intensive care unit survivors. *Am J Respir Crit Care Med* 2016;194(3):299–307.
42. Inouye SK, Viscoli CM, Horwitz RI, et al. A predictive model for delirium in hospitalized elderly medical patients based on admission characteristics. *Ann Intern Med* 1993;119(6):474–81.
43. Vidán MT, Sánchez E, Alonso M, et al. An intervention integrated into daily clinical practice reduces the incidence of delirium during hospitalization in elderly patients. *J Am Geriatr Soc* 2009;57(11):2029–36.

44. Shukla A, Nieman CL, Price C, et al. Impact of hearing loss on patient–provider communication among hospitalized patients: a systematic review. *Am J Med Qual* 2019;34(3):284–92.
45. Zhou Q, Walker NF. Promoting vision and hearing aids use in an intensive care unit. *BMJ Open Qual* 2015;4(1). u206276.w2702.
46. Passel J, Rohal M. Modern immigration wave brings 59 million to US, driving population growth and change through 2065: Views of immigration’s impact on US society mixed. Washington, DC: Pew Research Center; 2015. Available at: https://www.pewresearch.org/hispanic/wp-content/uploads/sites/5/2015/09/2015-09-28_modern-immigration-wave_REPORT.pdf.
47. US Census Bureau. Language use. 2019. Available at: <https://www.census.gov/topics/population/language-use.html>. Accessed September 18, 2020.
48. LEP.gov. Limited English proficiency (LEP) frequently asked questions. Available at: <https://www.lep.gov/faqs/faqs.html#OneQ1>. Accessed September 20, 2020.
49. Derose KP, Escarce JJ, Lurie N. Immigrants and health care: sources of vulnerability. *Health Aff* 2007;26(5):1258–68.
50. Devlin JW, Fong JJ, Schumaker G, et al. Use of a validated delirium assessment tool improves the ability of physicians to identify delirium in medical intensive care unit patients. *Crit Care Med* 2007;35(12):2721–4.
51. Ely EW, Margolin R, Francis J, et al. Evaluation of delirium in critically ill patients: validation of the confusion assessment method for the intensive care unit (CAM-ICU). *Crit Care Med* 2001;29(7):1370–9.
52. Fick DM, Agostini JV, Inouye SK. Delirium superimposed on dementia: a systematic review. *J Am Geriatr Soc* 2002;50(10):1723–32.
53. Frischen A, Bayliss AP, Tipper SP. Gaze cueing of attention: visual attention, social cognition, and individual differences. *Psychol Bull* 2007;133(4):694.
54. Poliakoff E, Ashworth S, Lowe C, et al. Vision and touch in ageing: Crossmodal selective attention and visuotactile spatial interactions. *Neuropsychologia*. 2006; 44(4):507–17.
55. Savundranayagam MY, Orange JB. Matched and mismatched appraisals of the effectiveness of communication strategies by family caregivers of persons with alzheimer’s disease. *Int J Lang Commun Disord* 2014;49(1):49–59.
56. Eccles DR. Communicating with the cognitively impaired patient. Florida Board of Nursing. Tallahassee (FL): Advance Nursing Institute INC; 2013.
57. Vanhorebeek I, Latronico N, Van den Berghe G. ICU-acquired weakness. *Intensive Care Med* 2020;150(5):1129–40.
58. Fan E, Cheek F, Chlan L, et al. An official American Thoracic Society clinical practice guideline: the diagnosis of intensive care unit–acquired weakness in adults. *Am J Respir Crit Care Med* 2014;190(12):1437–46.
59. Chlan LL, Tracy MF, Guttormson J, et al. Peripheral muscle strength and correlates of muscle weakness in patients receiving mechanical ventilation. *Am J Crit Care* 2015;24(6):e91–8.
60. Beukelman DR, Garrett KL, Yorkston KM. Augmentative communication strategies for adults with acute or chronic medical conditions. Baltimore (MD): Paul H. Brookes Publishing Company; 2007.
61. Happ MB, Seaman JB, Nilsen ML, et al. The number of mechanically ventilated ICU patients meeting communication criteria. *Heart & Lung* 2015;44(1):45-9.
62. International society for augmentative and alternative communication. What is AAC? 2014. Available at: <https://www.isaac-online.org/english/what-is-aac/>. Accessed July 31, 2020.

63. Carruthers H, Astin F, Munro W. Which alternative communication methods are effective for voiceless patients in intensive care units? A systematic review. *Intensive Crit Care Nurs* 2017;42:88–96.
64. Rodriguez CS, Rowe M, Koeppel B, et al. Development of a communication intervention to assist hospitalized suddenly speechless patients. *Technology Health Care* 2012;20(6):519–30.
65. Happ MB, Garrett KL, Tate JA, et al. Effect of a multi-level intervention on nurse-patient communication in the intensive care unit: results of the speacs trial. *Heart Lung*. 2014;43(2):89–98.
66. Happ MB, Sereika SM, Houze MP, et al. Quality of care and resource use among mechanically ventilated patients before and after an intervention to assist nurse-novocal patient communication. *Heart & Lung*. 2015;44(5):408–15.e2.
67. Trotta RL, Hermann RM, Polomano RC, et al. Improving nonvocal critical care patients' ease of communication using a modified speacs-2 program. *J Healthc Qual (Jhq)* 2020;42(1):e1–9.
68. Radtke JV, Tate JA, Happ MB. Nurses' perceptions of communication training in the icu. *Intensive Crit Care Nurs* 2012;28(1):16–25.
69. Dithole K, Thupayagale-Tshweneagae G, Akpor OA, et al. Communication skills intervention: promoting effective communication between nurses and mechanically ventilated patients. *BMC Nurs* 2017;16(1):74.
70. Holm A, Dreyer P. Use of communication tools for mechanically ventilated patients in the intensive care unit. *CIN: Comput Inform Nurs* 2018;36(8):398–405.
71. Otuzoğlu M, Karahan A. Determining the effectiveness of illustrated communication material for communication with intubated patients at an intensive care unit. *Int J Nurs Pract* 2014;20(5):490–8.
72. Patak L, Gawlinski A, Fung NI, et al. Communication boards in critical care: patients' views. *Appl Nurs Res* 2006;19(4):182–90.
73. Happ MB, Roesch TK, Garrett K. Electronic voice-output communication aids for temporarily nonspeaking patients in a medical intensive care unit: a feasibility study. *Heart & Lung*. 2004;33(2):92–101.
74. Koszalinski RS, Tappen RM, Viggiano D. Evaluation of speak for myself with patients who are voiceless. *Rehabil Nurs J* 2015;40(4):235–42.
75. Miglietta MA, Bochicchio G, Scalea TM. Computer-assisted communication for critically ill patients: a pilot study. *J Trauma* 2004;57(3):488–93.
76. Happ MB, Von Visger T, Weber ML, et al. Iterative development, usability, and acceptability testing of a communication app for mechanically ventilated patients. *Am J Resp Crit Care Med* 2016;193:A1096.
77. Ten Hoorn S, Elbers P, Girbes A, et al. Communicating with conscious and mechanically ventilated critically ill patients: a systematic review. *Crit Care* 2016;20(1):333.
78. Hess DR. Facilitating speech in the patient with a tracheostomy. *Respir Care* 2005;50(4):519–25.
79. Zaga CJ, Berney S, Vogel AP. The feasibility, utility, and safety of communication interventions with mechanically ventilated intensive care unit patients: a systematic review. *Am J speech-language Pathol* 2019;28(3):1335–55.
80. O'Connor LR, Morris NR, Paratz J. Physiological and clinical outcomes associated with use of one-way speaking valves on tracheostomised patients: a systematic review. *Heart & Lung*. 2019;48(4):356–64.
81. Rose L, Istanbulian L, Smith OM, et al. Feasibility of the electrolarynx for enabling communication in the chronically critically ill: the eeccho study. *J Crit Care* 2018;47:109–13.

82. Blackstone SW, Pressman H. Patient communication in health care settings: new opportunities for augmentative and alternative communication. *Augment Altern Commun* 2016;32(1):69–79.
83. Happ MB, Swigart VA, Tate JA, et al. Family presence and surveillance during weaning from prolonged mechanical ventilation. *Heart & Lung*. 2007;36(1): 47–57.
84. Broyles LM, Tate JA, Happ MB. Use of augmentative and alternative communication strategies by family members in the intensive care unit. *Am J Crit Care* 2012;21(2):e21–32.
85. Alasad J, Ahmad M. Communication with critically ill patients. *J Adv Nurs* 2005; 50(4):356–62.
86. Engstrom A, Soderberg S. The experiences of partners of critically ill persons in an intensive care unit. *Intensive Crit Care Nurs* 2004;20(5):299–308 [quiz: 309–210].
87. Scheunemann LP, Ernecoff NC, Buddadhumaruk P, et al. Clinician-family communication about patients' values and preferences in intensive care units. *JAMA Intern Med* 2019;179(5):676–84.
88. Shin JW, Tate JA, Happ MB. The facilitated sensemaking model as a framework for family-patient communication during mechanical ventilation in the intensive care unit. *Crit Care Nurs Clin North Am* 2020;32(2):335–48.
89. Liu V, Read JL, Scruth E, et al. Visitation policies and practices in us icus. *Crit Care* 2013;17(2):1–7.
90. Au SS, des Ordon ALR, Leigh JP, et al. A multicenter observational study of family participation in ICU rounds. *Crit Care Med* 2018;46(8):1255–62.
91. Kotfis K, Williams Roberson S, Wilson JE, et al. Covid-19: ICU delirium management during sars-cov-2 pandemic. *Crit Care* 2020;24:1–9.
92. Greenberg N, Docherty M, Gnanapragasam S, et al. Managing mental health challenges faced by healthcare workers during covid-19 pandemic. *BMJ* 2020;368.
93. HealthIT. gov. What is telehealth? How is telehealth different from telemedicine?. Available at: <https://www.healthit.gov/faq/what-telehealth-how-telehealth-different-telemedicine>. Accessed July 31, 2020.
94. Calton B, Abedini N, Fratkin M. Telemedicine in the time of coronavirus. *J Pain Symptom Management*. 2020;60(1):e12–4.
95. Lilly CM, Zubrow MT, Kempner KM, et al. Critical care telemedicine: evolution and state of the art. *Crit Care Med* 2014;42(11):2429–36.
96. Kahn JM, Cicero BD, Wallace DJ, et al. Adoption of intensive care unit telemedicine in the United States. *Crit Care Med* 2014;42(2):362.
97. Munro CL, Cairns P, Ji M, et al. Delirium prevention in critically ill adults through an automated reorientation intervention—a pilot randomized controlled trial. *Heart & Lung*. 2017;46(4):234–8.
98. Olanipekun T, Ezeagu R, Oni O, et al. Improving the quality of family participation in ICU rounds through effective communication and telemedicine. *Read Online Crit Care Med Soy Cril Care Me* 2019;47(2):e159.
99. Menon PR, Stapleton RD, McVeigh U, et al. Telemedicine as a tool to provide family conferences and palliative care consultations in critically ill patients at rural health care institutions: a pilot study. *Am J Hosp Palliat Medicine*®. 2015; 32(4):448–53.
100. Østervang C, Vestergaard LV, Dieperink KB, et al. Patient rounds with video-consulted relatives: qualitative study on possibilities and barriers from the perspective of healthcare providers. *J Med Internet Res* 2019;21(3):e12584.

101. Yager PH, Clark M, Cummings BM, et al. Parent participation in pediatric intensive care unit rounds via telemedicine: feasibility and impact. *J Pediatr* 2017; 185:181–6.e3.
102. de Havenon A, Petersen C, Tanana M, et al. A pilot study of audiovisual family meetings in the intensive care unit. *J Crit Care* 2015;30(5):881–3.
103. Stelson EA, Carr BG, Golden KE, et al. Perceptions of family participation in intensive care unit rounds and telemedicine: a qualitative assessment. *Am J Crit Care* 2016;25(5):440–7.
104. Cox CE, White DB, Hough CL, et al. Effects of a personalized web-based decision aid for surrogate decision makers of patients with prolonged mechanical ventilation: a randomized clinical trial. *Ann Intern Med* 2019;170(5):285–97.
105. Suen AO, Butler RA, Arnold R, et al. Developing the family support tool: an interactive, web-based tool to help families navigate the complexities of surrogate decision making in icus. *J Crit Care* 2020;56:132–9.