

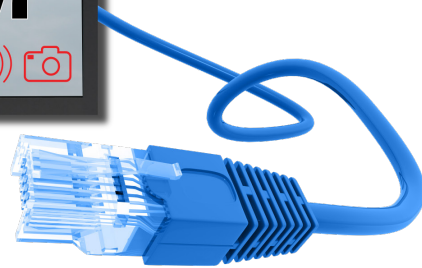
POWER OVER ETHERNET PANORAMIC DISPLAYS



GPO Display's Panoramic LCDs have long brought critical, detailed information to areas where standard 16:9 screens don't fit. The only problem is, there are rarely AC outlets in such spaces (e.g. above/directly alongside doorways). This new line of Power Over Ethernet stretch displays, ranging from 27-50" (diag.), solves this issue via structured cabling instead of costly & inconvenient new AC outlet(s).

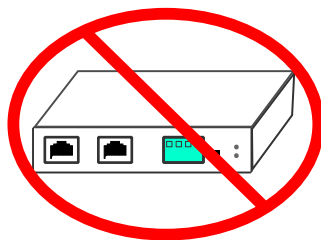


*PSE/Injector not included

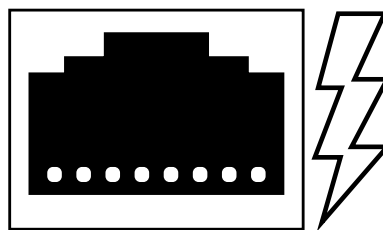


12V	+
V-	-
	-
24V	+

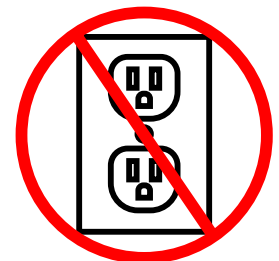
12/24V DC Output



No PoE Splitter Needed



Power Over Ethernet



No AC Outlet Required

SPECIFICATIONS



Model	POE27D	POE28D	POE37D	POE48D	POE50D	
Screen Size (diag.)	27"	28"	37"	48"	49.5"	
Resolution (typ.)	1920 x 360	1920 x 540	1920 x 540	1920 x 360	1920 x 540	
Brightness	700nit	700nit	600nit	700nit	700nit	
Display (PD) Power Consumption (max.)	27W	40W	55W	47W	47W	
PoE Injector (PSE) Compatibility	802.3bt Type 3 (60W)	Yes	Yes	No	Yes	Yes
	802.3bt Type 4 (90W)	Yes	Yes	Yes	Yes	Yes
Connectivity	IN: (1) HDMI, (1) DisplayPort, (1) RS-232 (3-pin terminal block) OUT: (1) DisplayPort (video daisy-chain)					
PoE Input Port	1 10/100/1000 BASE-T RJ45					
Data Output Port	1 10/100/1000 BASE-T RJ45					
DC Out Plug Connector	4-pin terminal block (3.81mm pitch)					
Power Output	12/24VDC outputs - power availability varies based on PSE and PD models					
Power Requirements	802.3bt PoE++ Type 3 or 4 (varies by model)					
Run Distance	(60W+) 4-pair UTP Cat. 5e, 6, up to 100m (328ft)					

