

# Amy Kalikow

She may not have begun her career as an interior designer, but Amy Kalikow isn't surprised she ended up as one. Having always worked on the business side in creative industries – advertising and fashion PR are both on her resumé – Amy sought out other ways to express her artistic passion. Her mother had been a personal shopper, so Amy was always enamored of textiles and found herself drawn to unique yet classic designers. As Amy continued to blend creativity with strategy, both professionally and personally, it became more and more obvious that interior design was to be her next, most successful endeavor.

Amy delights in discovering how her clients live – or aspire to live – their lives, working hand in hand with each to identify their needs and dreams and translate them into a well-thought-out home. She amplifies a careful curation of one-of-a-kind items to reflect the owners' individuality, while always centering her work on the cornerstones of true livability and modern sensibility. Amy always adds a rich selection of layers and texture through fabrics and finishings, helping bring each and every space to life.

In an effort to always design and create ahead of the curve, Amy seeks out solutions that are timeless and luxurious with a touch of whimsy. All items in a room should work together but still be significant enough to stand alone,

she believes, and she isn't afraid to take risks if it means a home that perfectly reflects its inhabitants.

In this New York City home for a family of five, each floor needed to be unique and creative but work well with the other floors to create a cohesive home. Opening the kitchen on the first floor produced more storage space and room to enlarge the island. The clean, timeless selections for the cabinetry and stone needed to work well with the double-height fireplace, which Amy designed and clad in stone and fluted wood. The monochromatic palette allows an oversized, colorful art piece by Maya Hayuk to truly shine.

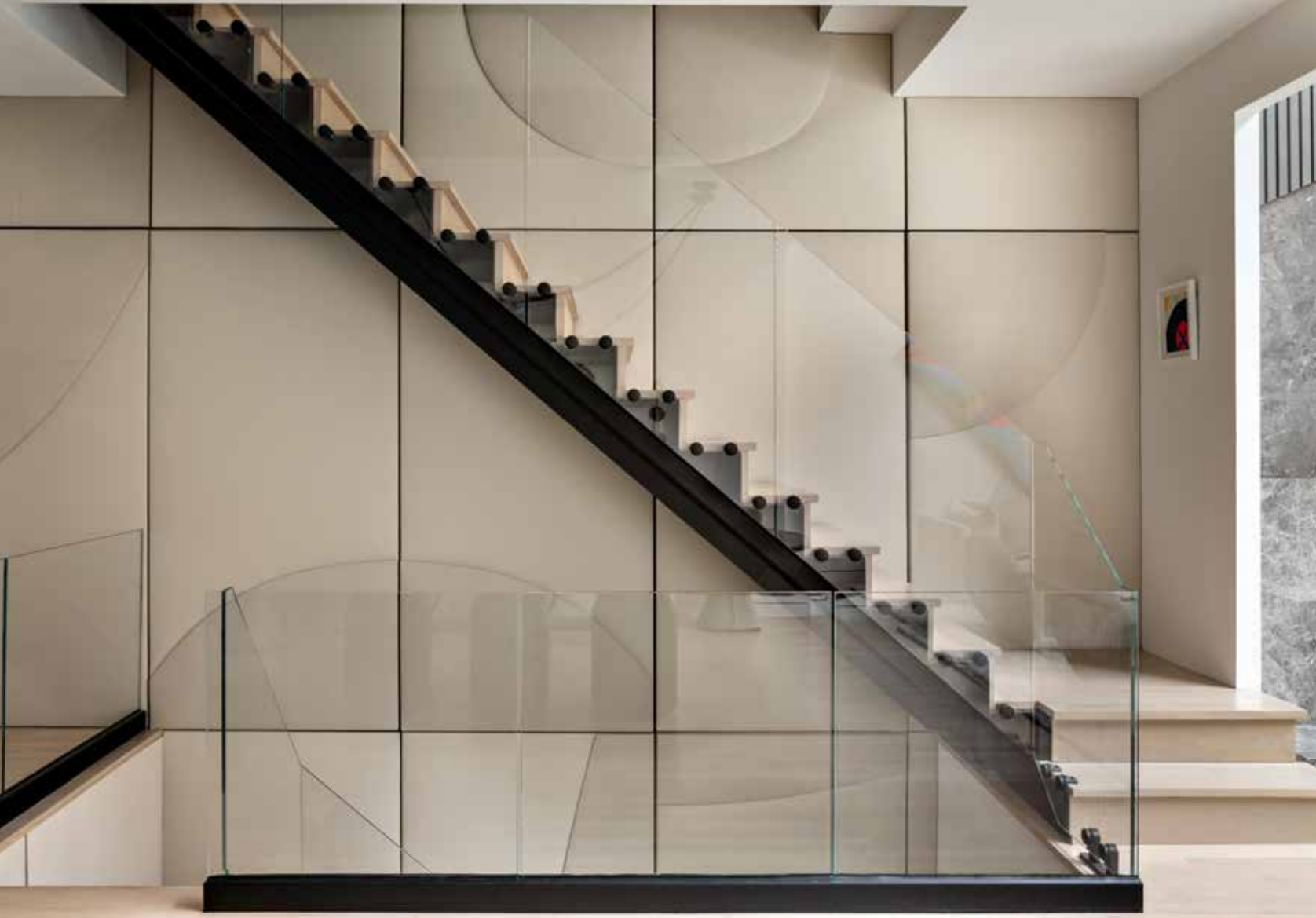
The top-floor playroom centers around the custom wall mural, which provides fun and color while remaining in line with the creative vision for the home. The mural lends itself to the uniquely shaped pieces for the adjoining outdoor space, bringing great continuity and cohesion between the two areas while maintaining a welcoming sense of calm.

Throughout the home, luxurious textured carpets, distinctive lighting selections, and custom cabinetry bring the design to life. The primary bedroom, with its soothing colors and immensely tactile fabric selections, is an elevated yet tranquil sanctuary for the couple to enjoy and in which they can truly relax.

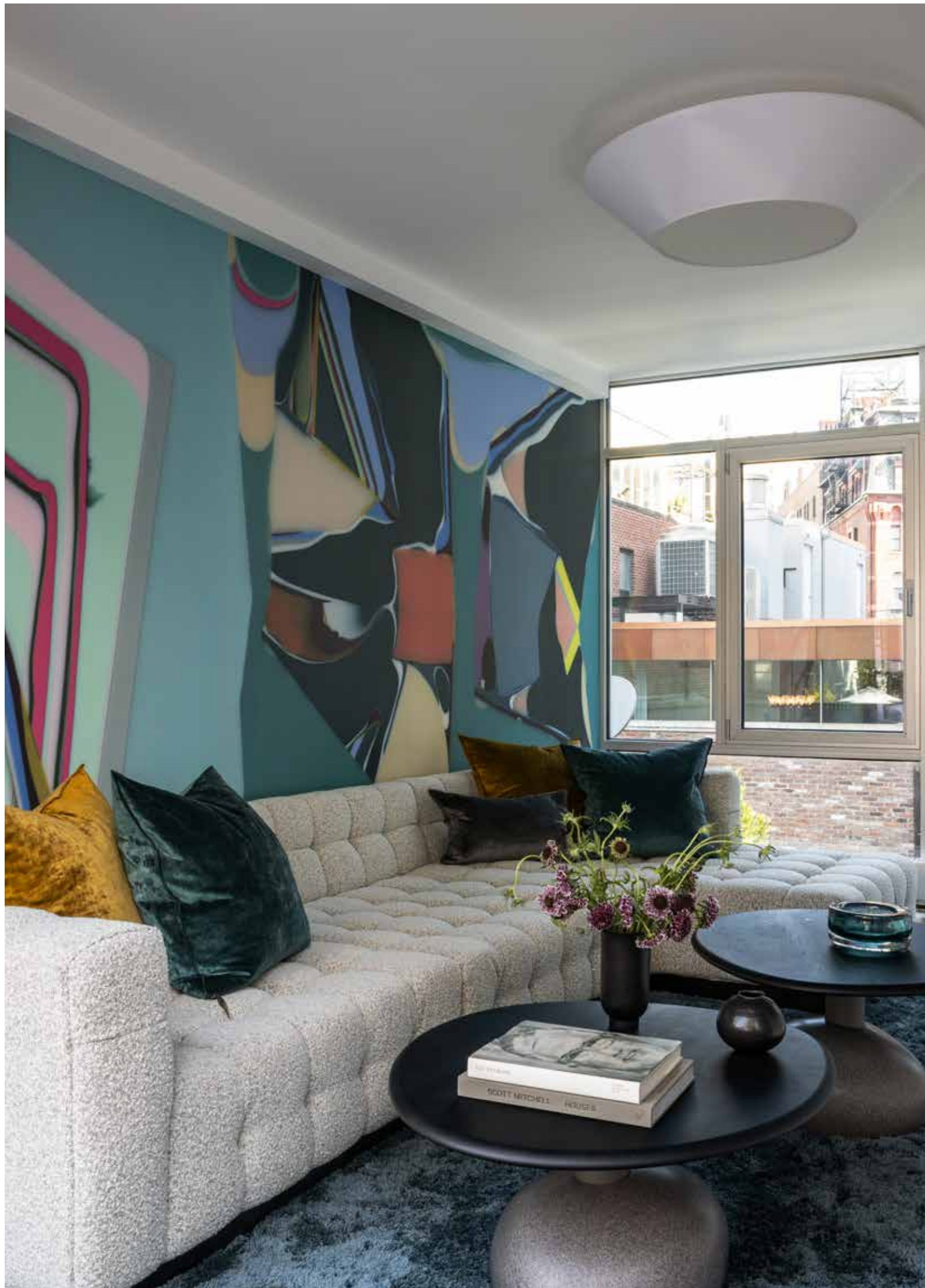












“Design with a modern sensibility,  
shared with a sense of creativity  
and whimsy.”

— Amy Kalikow







# designers

marc berger

karen bow

tracie butler

beth conant-keim

jodi cook

kari mcintosh dawdy

lucila diaz

kristin dittmar doremus

matthew frederick

nicole fuller

heather garrett

katie geresy

michael habachy

amy kalikow

meg lavalette

claire maestroni & giorgio maroulis

brooke michelsen

carola pimentel

mindy porter

liz potarazu

jasmin reese

kristen reyes

mark schubert

crystal sinclair

marie-louise sjögren

may sung

rob turner

philip thomas vanderford

sharlene young

kelly zerbini

# Nicole Fuller

In many ways, Nicole Fuller was fated to thrive in the world of interior design. Her mother was an artist who excelled in numerous mediums, whose renaissance talents inspired Nicole to design her own London home. After collecting compliments and lending her magic touch to her friends' homes, Nicole embraced her natural talent and opened her own namesake studio in New York City, with satellite offices in London and Los Angeles.

Nicole believes in a holistic approach, and as such her practice is a full-service design firm that specializes in ground-up building, interior architecture, and art advising. Since Nicole finds sustenance in art, she has spent her career cultivating relationships with top-tier artists, gallerists, and nascent talent. This keen understanding of the art market and her exclusive access in turn results in homes that are filled with thought-provoking, beautiful, and important art that speaks to the homeowners who enjoy it every day.

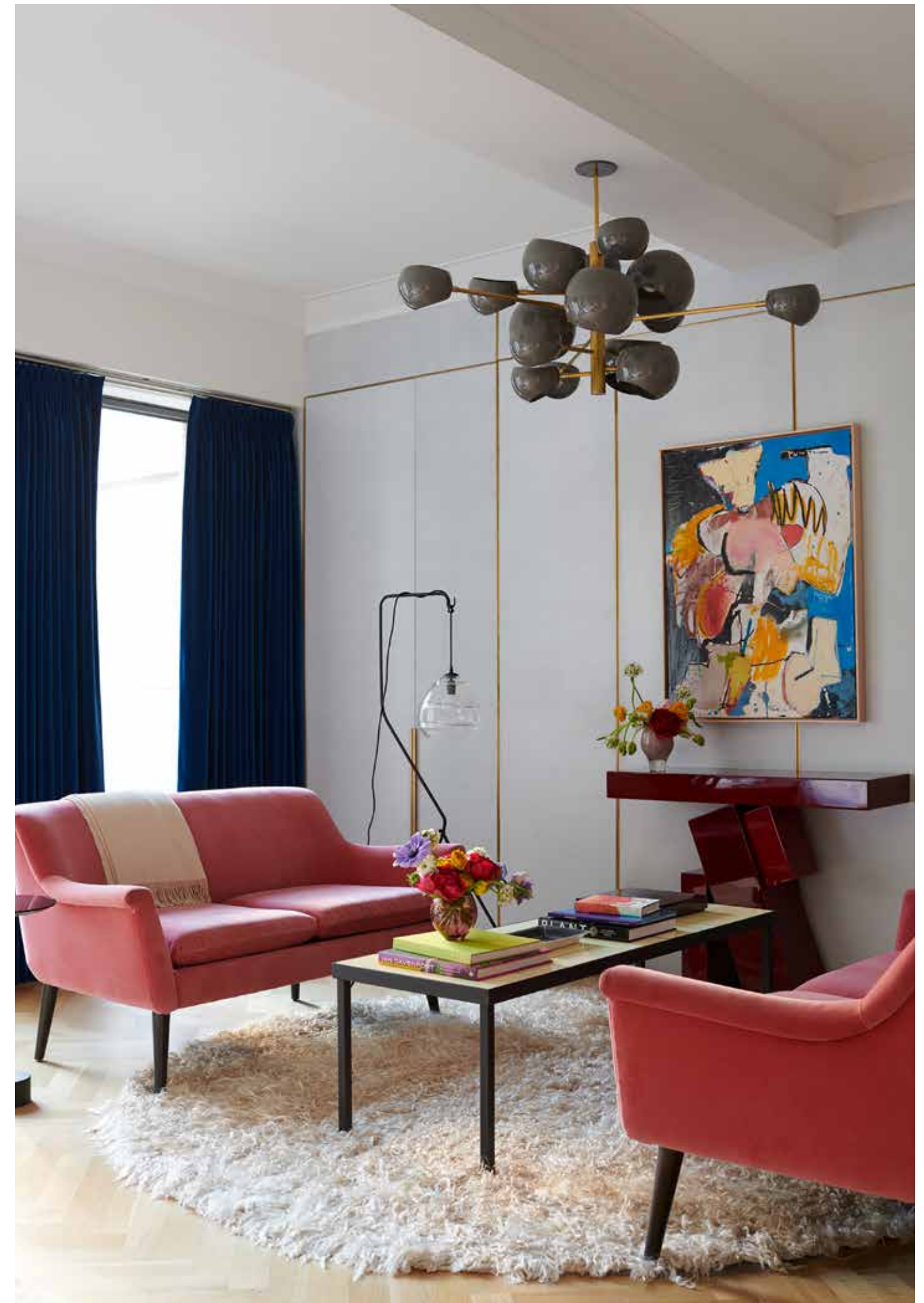
No detail is too small; Nicole is known for custom-designing furniture, textiles, wall treatments and even scents for spaces that are unequivocally bespoke. From serene neutrals and minimal silhouettes to bold patterns and ebullient color, Nicole has a chameleon-like ability to create distinctive, personal homes. Her residential projects for both celebrities and art appreciators alike

span coast to coast, major European cities, and even the rural English countryside.

Layers in both texture and lighting, plus the aforementioned art, are vital elements that are prioritized in every home Nicole designs. Layered lighting achieves a cohesive balance between decorative and cast lighting that ultimately creates just the right mood. Varying textures encourage fabrics to play off one another and tell a story, but texture needn't be confined to only fabric: wall niches and furniture work in harmony to present a room that thrums with interest.

These particular clients were not afraid of strong color and were keen to bring even more vibrant hues into their home. The two symmetrical blue walls in the dining room and the drawing room ground the home and served as the launchpad for the entire design.

Collaborators include Ralph Pucci International, The Rug Company, and Callidus Guild, which created the entry plaster, and furniture and lighting specialists Gabriel Scott. They crafted customized pendants in blended colors of amber, white, and smoked grey glass to draw the neutrals together. These staggered, geometric, double-blown glass pendants are timeless and diffuse a soft light that's perfect for day-to-day when the family is eating or doing jigsaw puzzles.













Photography by: William Waldron



“Art, scent, texture, and lighting are key elements of a thoughtfully designed interior.”

— Nicole Fuller



# Michael Habachy

From weighing in on the architectural drawings to curating the art collection, Michael Habachy loves having a hand in each stage of the design process. Being involved in every step combines his love for the technical side of design with the creative and conceptual side, resulting in a multi-faceted approach that sets his firm and showroom, Habachy Designs + Atelier, apart.

Though Michael and his expert team have tremendous resources for exceptional furnishings, lighting, and more, they are not limited to “off the shelf” designs. Instead, they are happy to create unique millwork, fine interior architectural details, and special furnishings, believing that luxury design should be tailor-made for each space, like a bespoke suit.

Making things is in Michael’s blood. The child of Egyptian immigrants, he grew up drawing, painting, and helping his father in his shop – his father designed and built the family home, and much of the furniture in it. While Michael was studying interior design at university, he worked for a custom architectural fabrication studio whose clients included some of the top architects and interior designers in Atlanta. From just their drawings or an inspiration photo, Michael would help bring their vision to life.

Just as you can tell a lot about someone by looking at their books, a person’s art, furnishings, and décor reveal even more. Michael often takes his cue from a piece of art and will design a whole room around the artwork. If the owner doesn’t already have an extensive art collection, Michael will happily

whisk them off to auctions or antique shows and share his expertise in selecting the foundation pieces.

For a large family building a modern home in the exclusive Tuxedo Park neighborhood of Buckhead, Michael worked closely with the architect from the planning stages onward. His firm designed many of the interior architectural features, from the custom kitchen and bar to the Shou Sugi Ban-clad wine room.

And Michael isn’t afraid to push boundaries, even if doing so requires engineering feats. The firebox opening in the great room fireplace is asymmetrical, and the vertical steel-clad wall juts out and cantilevers off to the right. Many internal steel structural brackets were added to ensure that the structure would not sag from all the weight above. The towering shelving storing all the wood kindling needed to look seamless and minimal, so the shelves were kept thin and constructed from quarter-inch steel plates. The stacked steel boxes fasten to each other and the walls internally, presenting a breathtaking feature that soars 12 feet to the ceiling.

Three sons, a grandmother, and a Bernedoodle might have seemed a challenge to design around, especially when the owners wanted their home to be a sanctuary modeled after the stunning Aman resorts, but clever material selection – including leathered natural quartzite slabs in the two kitchens, and wire-brushed white European oak hardwoods – provides durability while looking exquisite.













Photography by: Galina Coad



“A collected look is integral to a beautiful interior — it’s what gives a home its true spirit and soul.”

— Michael Habachy



# Jasmin Reese

Whether bright, airy, and modern or moody, cozy, and dramatic, Jasmin Reese's homes always give 110 percent. That's because the interior designer encourages her clients to bravely push 10 percent past their comfort zone – that, she has learned, is where the magic happens.

That extra jolt of creativity doesn't automatically manifest itself in more furniture and an excess of décor, however. A true luxury in design is space: giving pieces room to breathe and, in turn, your eye the opportunity to leisurely appreciate its surroundings. Maximalism is good, but cramming a room with too many items is never a wise move. Likewise, she's always careful to build in "palette cleanser" rooms, or a unique note in the floorplan that surprises when you least expect.

Jasmin's background in luxury boutique hotels still influences the homes she designs. Each project is a personalized jewel box, a chance to weave a story through fabric, color, texture, and lighting. The layering of different types of lighting, specifically, is vital. Furniture can come later, she advises, but getting the mood just right first, through lamps and fixtures, is everything.

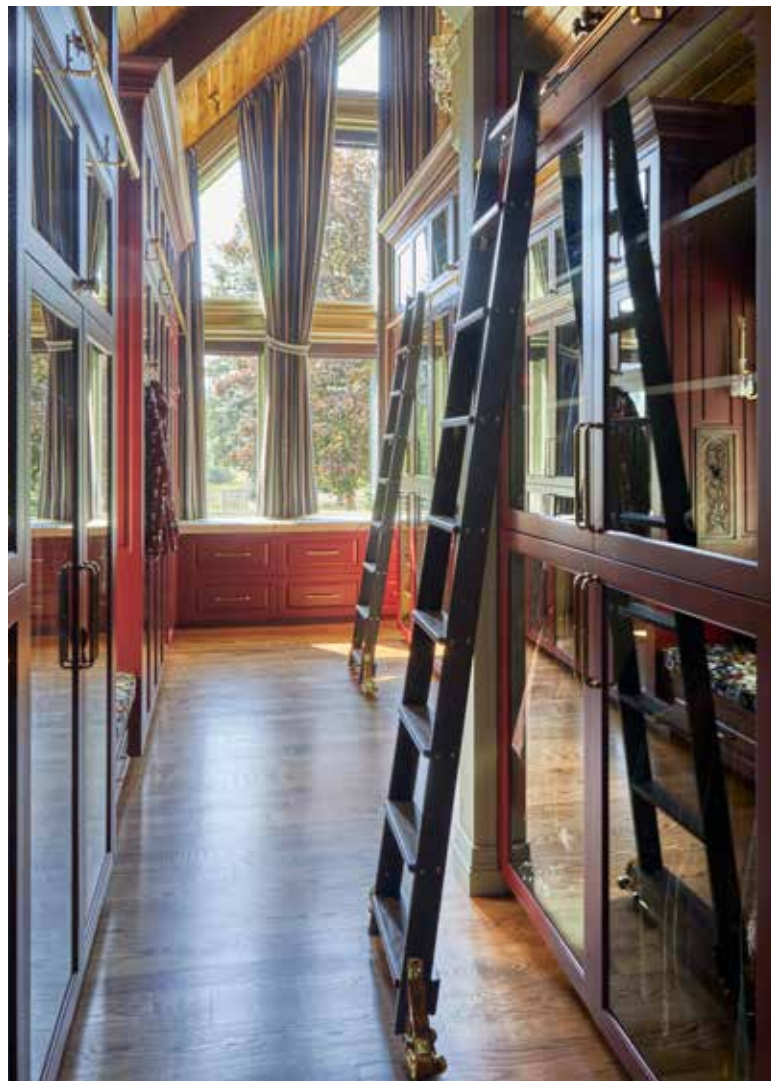
A glamorous Idaho ranch tucked away near a national forest exudes understated

theatricality, thanks largely to rich colors and unique materials. Jasmin believes not every room has to flow into the next, or that a home should be bound to one color story. You can wander from the green and purple primary bedroom into the burgundy closet, and then into the bright white and blue bathroom, and everything feels fresh and refined, yet still approachable. Luxe touches run throughout, from chandeliers dripping with crystals to lush wallpaper patterns and plenty of gold accents.

One such unforgettable pairing of vibrant color and metallics is found in the feminine primary bathroom, of the his-and-her dual design. Marble slabs veined with soft lilac and regal amethyst were sourced from Chicago, while the brightly polished, standalone gold tub was flown in by helicopter. This ladylike room aside, the whole home exudes a masculine feel that is still dreamy and romantic – exactly the wish of the homeowners.

Knowing your home's vibe is as much about utility as it is aesthetic. Are you really going to play that baby grand piano in the living room, or are you more likely to curl up on a plush sofa and watch television? Either or both is fine, but being realistic about how you'll use a room is what inspires a design that is both pretty and purposeful.













Photography by: Michael Alan Kaskel



“Every room needs something old  
in it to exude mystery.”

—Jasmin Reese

# Crystal Sinclair

Sometimes it's the pleat in a skirt, or a brick pattern on a building, or the curve of a piece of furniture – inspiration can come from nearly anywhere, and Crystal Sinclair is always ready to spot it.

With a passion for fine arts and a history painting murals, Crystal's path toward interior design was a natural one. After studying it at design school, she returned to painting but found mural clients consulting with her on pillow choices, paint colors, and even window treatments. Soon, Crystal had transitioned into design full-time and opened Crystal Sinclair Designs in New York in 2019.

Throughout her career, Crystal has been applying her love for good contrast and bold, eclectic style to residential and hospitality projects around the country. She is not afraid to listen to a space and decipher what it wants, and is careful to balance proportions and color for rooms that are fresh and unexpected.

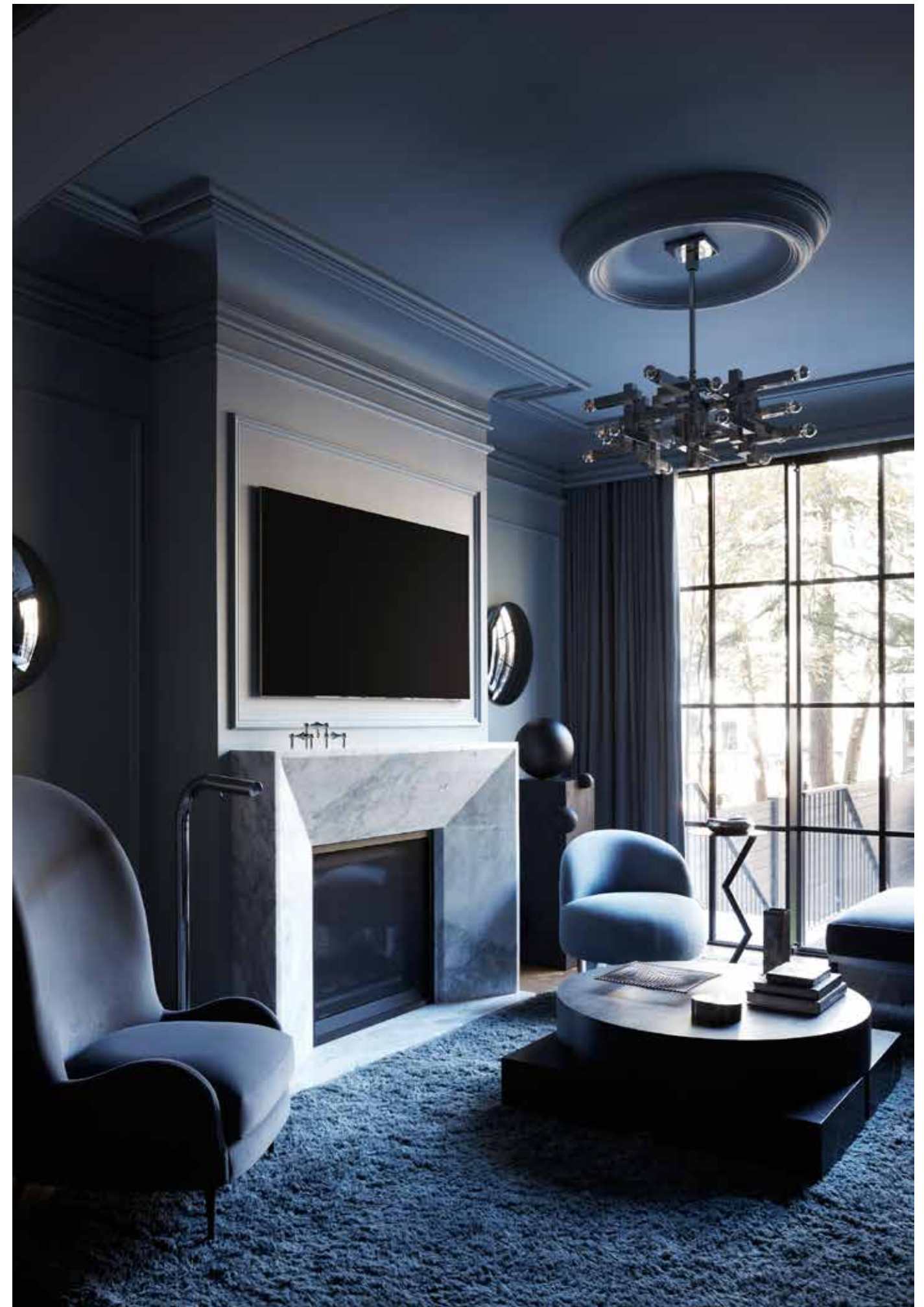
Good drapery and artwork are two of the most vital elements that pull a room together, complemented by a variety of lighting – table lamps, floor lamps, wall sconces, and more – to set the mood. Though it is important to have a common thread that ties each room to the next, Crystal advises, subtle choices make a bigger impact than obvious matching.

Drawing on the dark and sexy image of a rainstorm in the city, Crystal approached this Hoboken brownstone like a cozy mystery.

Brownstones come with myriad opportunities for creative problem-solving, such as narrow rooms and natural lighting that only infiltrates from the front and rear, and those are challenges that Crystal is adept at tackling.

Constructing a large metal and glass panel between the primary bedroom and bathroom allows light to bounce around the two spaces, for example, while colors and materials that enhance the home's intrinsically moody aesthetic were selected with intent. Contractor Ridge Restoration was meticulous in making sure all the details Crystal envisioned came to life. Mariana Marcki-Matos' expert styling ensured the home's accessories complemented the overall design.

Further embodying the storm inspiration, the entire brownstone immerses you in the different layers. The teal basement represents water while the first floor is under the clouds, with pink (dining room) and gold (kitchen) rays peeking out of the clouds. On the second floor, you're fully floating in the clouds with purple (primary bedroom), black (primary bathroom), and grey (guest bedroom). Once on the top floor, you're above the cloudline with aqua skies (nursery one) and a golden sun (nursery two). The all-black stairs and landings act like the rain, and the small entry vestibule is white to represent the lightning. It's a visual story told through color, texture, and space planning, and an ideal example of Crystal's artistic approach.















Photography by: Tim Lenz



“Keep your eyes open — you never know where inspiration is going to come from.”

— Crystal Sinclair