

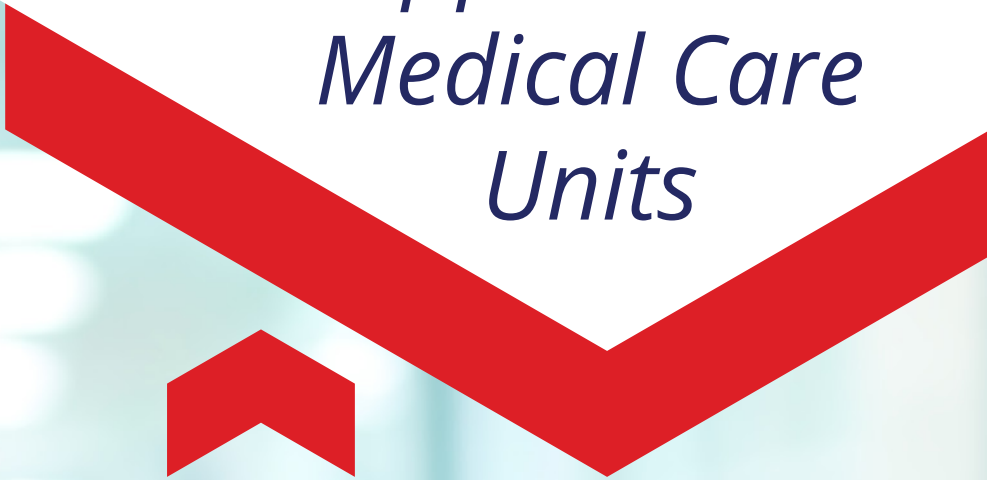


VOLUMETRIC
BUILDING COMPANIES

SUPPLEMENTAL MEDICAL CARE UNITS

*Crisis Response Now
Permanent Use Tomorrow
the Modular Solution*

Modular Supplemental Medical Care Units



With the rapid spread of COVID-19, available hospital rooms are decreasing and will soon be facing a critical stage. VBC has created a viable solution to provide substantial resources for hospitals across the country. This will allow those infected with COVID-19 to be treated by professionals in a secure healthcare environment that safely quarantines them, reducing risk of infecting others in need of medical care.

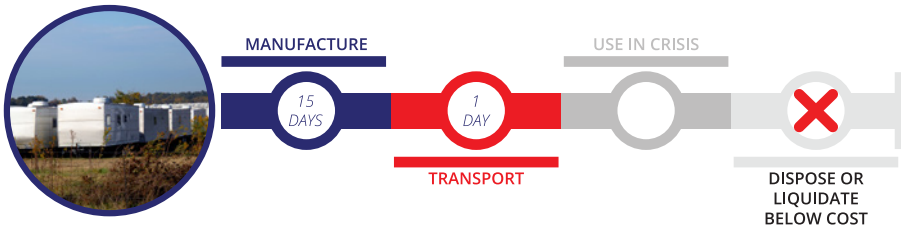
VBC presents an intelligent approach that is high-volume, scalable across the US, maximizes space within each unit, and has the added attribute of mitigating waste and cost to public and private agencies by providing an easy conversion of these units to permanent reuse as supportive housing.

Emergency Housing Life Cycle

Emergency housing is often manufactured and shipped for the one-time use of the crisis at hand. After the crisis has abated, the unit is either disposed of or liquidated at a loss. VBC's modular solution produces units that can be used to temporarily address the emergency need and then shipped to a permanent location to be used for affordable housing or supportive housing solutions.

Typical Emergency Housing Life Cycle

up to \$65,000 per trailer



FEMA has run cost benefit models comparing refurbishment/re-use vs. the cost of selling an MHU. The results typically do not present a positive outcome for re-use when weighed against the distance travelled and the length of time a unit is occupied, which maybe up to 18 months

KBTX has learned the trailers that reportedly cost FEMA around \$65,000 each, are now being sold on a government auction website with bids starting as low as \$100.

2019 - KBTX Hearne, T By Mekena Rodriguez |
Posted: Mon 9:53 AM, Feb 11, 2019

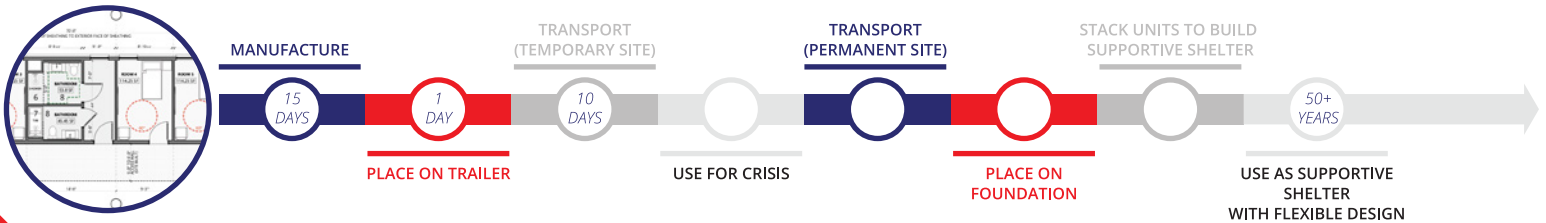
The modular solution to emergency units provides both lower up-front costs as well as structural resilience allowing for the units to be sanitized and relocated for future use. Rather than being disposed or sold at a loss, emergency modular units can be used to address the need for affordable and/or supportive housing across the nation.

Supplemental Care

from \$25,000 per room

To assist hospitals in need of immediate additional non-critical care space. With future conversion to supportive housing.

LIFE CYCLE OF VBC SUPPLEMENTAL CARE UNIT



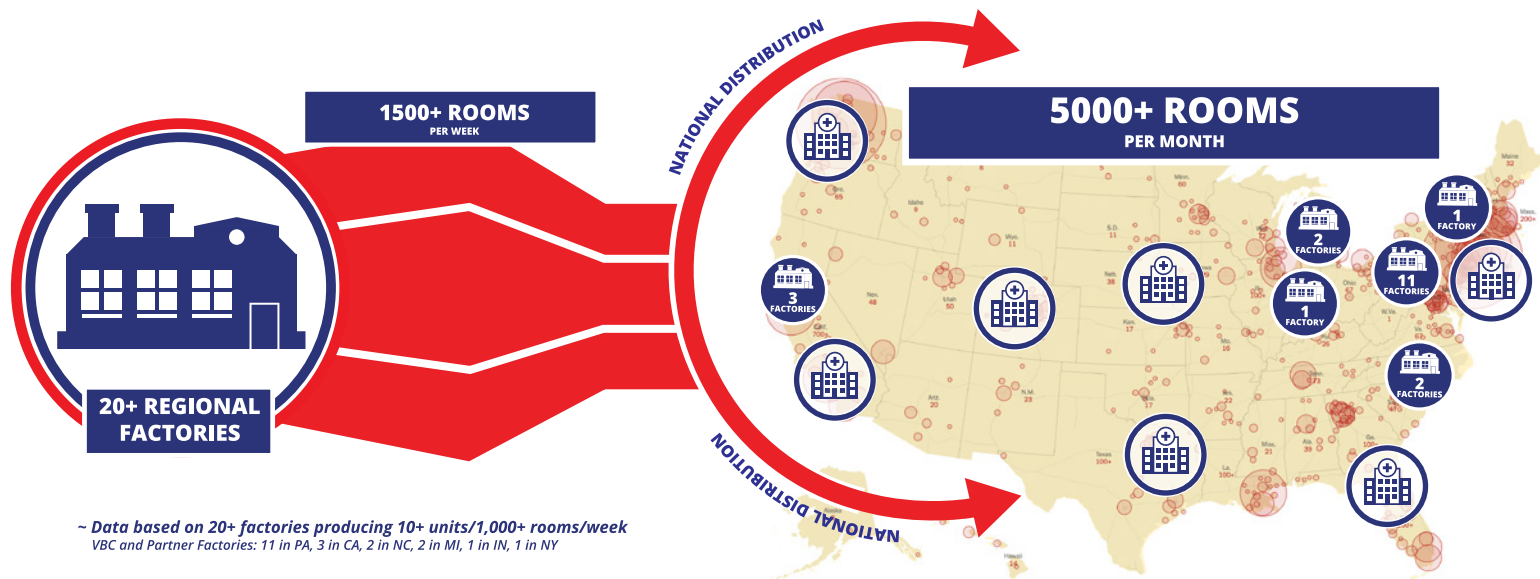
SUPPLEMENTAL
CARE

Pricing can vary depending upon manufacturing facility. Includes HVAC, Plumbing, Sprinkler, Electrical, Interior Finishes. On-site plumbing connections and common area HVAC and corridor to be completed on site. Furniture, medical technology and installation can be included at additional cost.

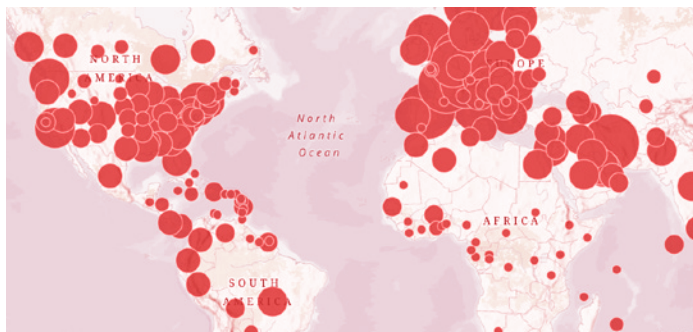
Confidential and Proprietary Business Information ©

Capacity of a national factory network

Utilizing VBC and partner factories in our network, we will provide a rapid response to the growing need for supplemental care units by hospitals and other agencies across the country.



As COVID-19 cases are rising at a rapidly increasing rate in the United States, we find ourselves in a developing healthcare crisis. This new pandemic will result in the U.S. healthcare infrastructure seeing immediate shortages in hospital rooms for patient care. VBC's modular units are a fast, efficient and cost effective way to address the need now, before the shortage has begun.

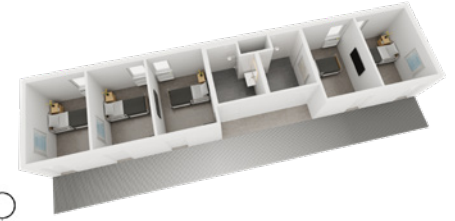


Together, we can solve this problem!

SUPPLEMENTAL CARE

Each modular unit contains five rooms with two bathrooms that act as a self-contained supplemental care unit for critical separation from other patients in the hospital.

Supplemental Care Module - Type 1

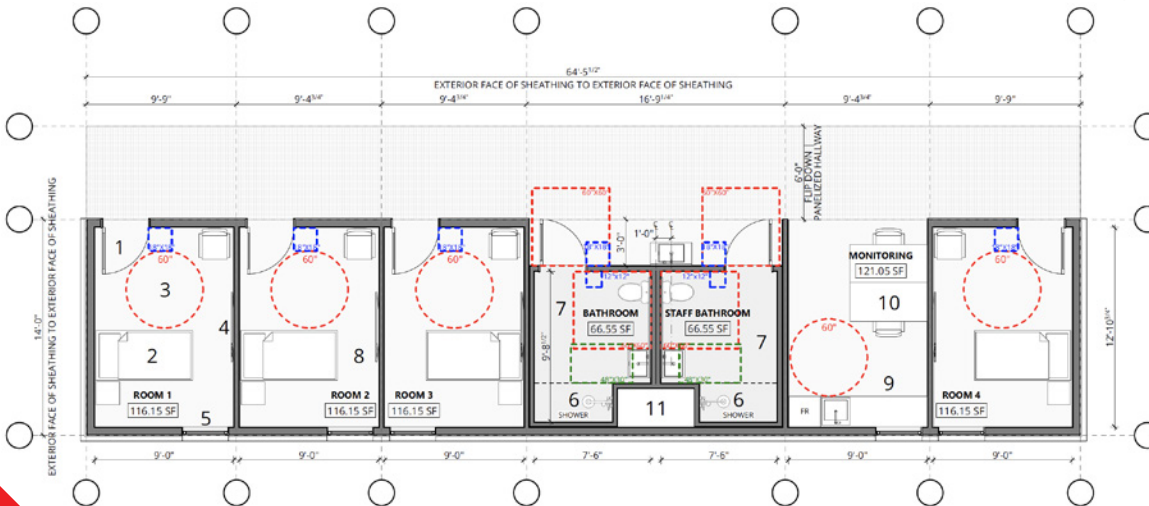
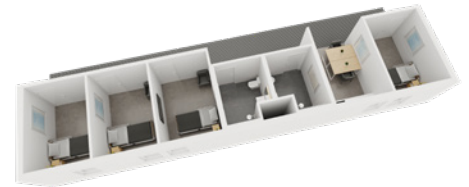


1. 3'-0" WIDE ENTRY DOOR
2. FURNITURE SUITE (TWIN BED, SIDE TABLE, CHAIR)
3. 5'-0" DIAMETER TURNING RADIUS
4. TV LOCATION
5. 3'-0" WIDE CASEMENT WINDOW PROVIDES 9 SF LIGHT; 4.5 SF VENTILATION
6. TYPE A BATHROOM WITH BARRIER FREE SHOWER
7. GRC AT WET FLOOR SURFACES
8. SHEET VINYL FLOORING
9. UTILITY CHASE WITH ACCESS PANEL

MODULE SF - 897 SF
 TREATMENT | QUARANTINE ROOMS - 5
 ACCESSIBLE BATHROOM - 2

6" EXTERIOR WALL WITH R19 CAVITY INSULATION, PLYWOOD SHEATHING AT EXTERIOR, GYPSUM WALLBOARD AT INTERIOR

Supplemental Care Module - Type 2A



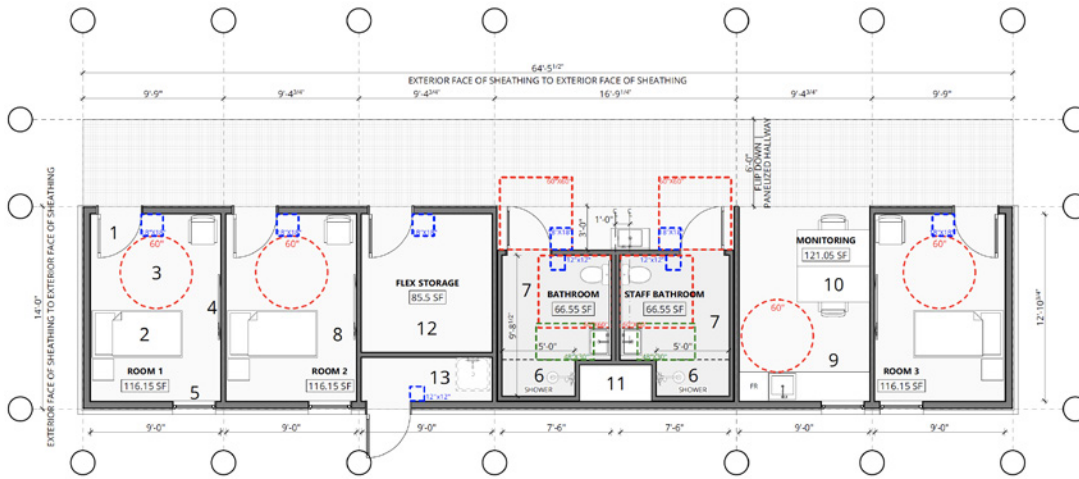
1. 3'-0" WIDE ENTRY DOOR
2. FURNITURE SUITE (TWIN BED, SIDE TABLE, CHAIR)
3. 5'-0" DIAMETER TURNING RADIUS
4. TV LOCATION
5. 3'-0" WIDE CASEMENT WINDOW PROVIDES 9 SF LIGHT; 4.5 SF VENTILATION
6. TYPE A BATHROOM WITH BARRIER FREE SHOWER
7. GRC AT WET FLOOR SURFACES
8. SHEET VINYL FLOORING
9. WASH SINK, UNDERCOUNTER FRIDGE AND STORAGE
10. (2) - 30X60 DESK WITH TASK CHAIR
11. UTILITY CHASE WITH ACCESS PANEL

MODULE SF - 897 SF
 TREATMENT | QUARANTINE ROOMS - 4
 STAFF BATHROOM - 1
 ACCESSIBLE BATHROOM - 1
 MONITORING SPACE - 1

6" EXTERIOR WALL WITH R19 CAVITY INSULATION, PLYWOOD SHEATHING AT EXTERIOR, GYPSUM WALLBOARD AT INTERIOR

As hospitals become overloaded with COVID-19 cases that need isolation, room to care for noncritical patients will become more challenging to find. The viable solution is separated care facilities to fight against the spread of the virus while also providing space for all patients.

Supplemental Care Module - Type 2B

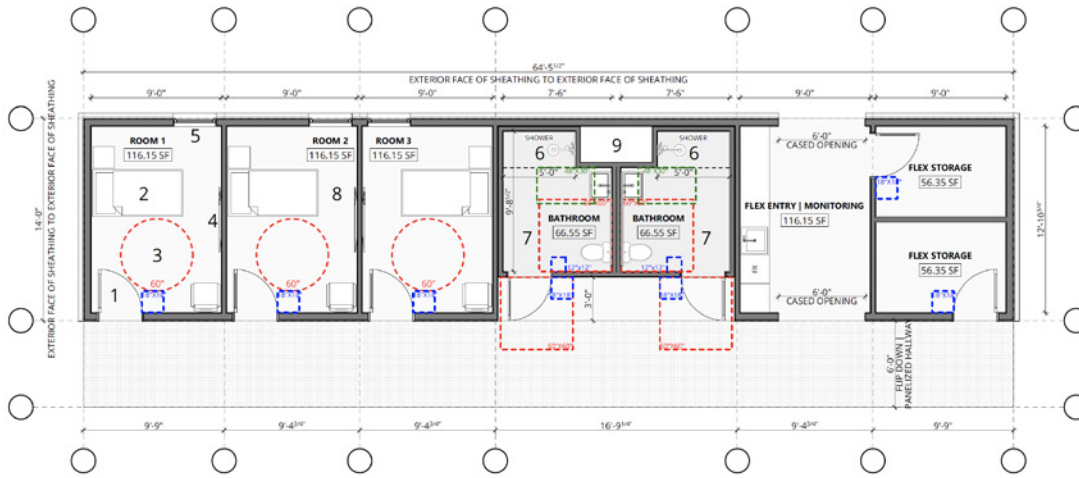


- 3'-0" WIDE ENTRY DOOR
- FURNITURE SUITE (TWIN BED, SIDE TABLE, CHAIR)
- 5'-0" DIAMETER TURNING RADIUS
- TV LOCATION
- 3'-0" WIDE CASEMENT WINDOW PROVIDES 9 SF LIGHT; 4.5 SF VENTILATION
- STAFF BATHROOM
- TYPE A BATHROOM WITH BARRIER FREE SHOWER
- GFRC AT WET FLOOR SURFACES
- SHEET VINYL FLOORING
- WASH SINK, UNDERCOUNTER FRIDGE AND STORAGE
- 11, (2) - 30X60 DESK WITH TASK CHAIR
- FLEXIBLE STORAGE FOR CLEAN OR SOILED LINENS
- FLEXIBLE UTILITY | JANITORIAL CLOSET
- UTILITY CHASE WITH ACCESS PANEL

- MODULE SF - 902 SF
- TREATMENT | QUARANTINE ROOMS - 3
- STAFF BATHROOM - 1
- ACCESSIBLE BATHROOM - 1
- MONITORING SPACE - 1
- FLEXIBLE STORAGE MODULE - 1

6' EXTERIOR WALL WITH R19 CAVITY INSULATION, PLYWOOD SHEATHING AT EXTERIOR, GYPSUM WALLBOARD AT INTERIOR

Supplemental Care Module - Type 3A

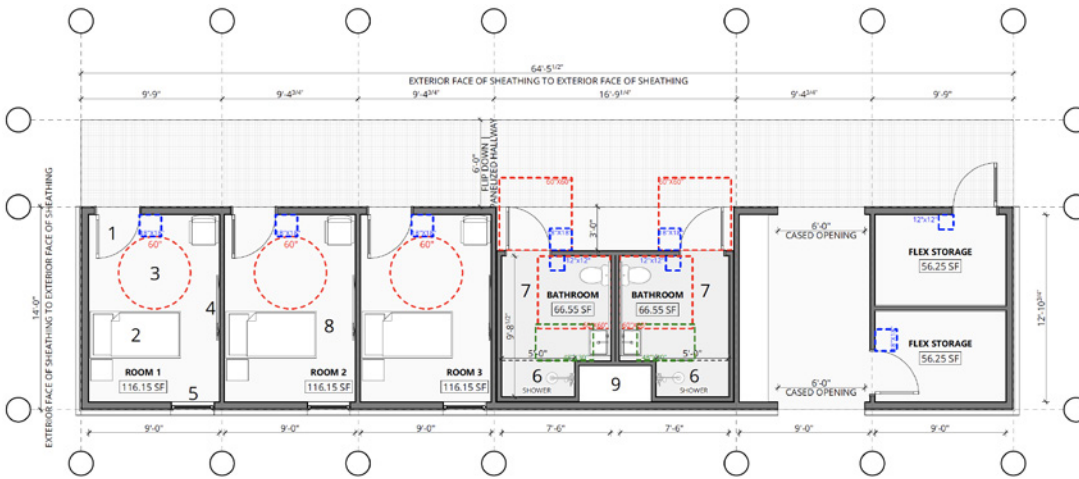


- 3'-0" WIDE ENTRY DOOR
- FURNITURE SUITE (TWIN BED, SIDE TABLE, CHAIR)
- 5'-0" DIAMETER TURNING RADIUS
- TV LOCATION
- 3'-0" WIDE CASEMENT WINDOW PROVIDES 9 SF LIGHT; 4.5 SF VENTILATION
- TYPE A BATHROOM WITH BARRIER FREE SHOWER
- GFRC AT WET FLOOR SURFACES
- SHEET VINYL FLOORING
- UTILITY CHASE WITH ACCESS PANEL

- MODULE SF - 902 SF
- TREATMENT | QUARANTINE ROOMS - 3
- ACCESSIBLE BATHROOM - 2
- FLEX | MONITORING - 1
- FLEX STORAGE - 2

6' EXTERIOR WALL WITH R19 CAVITY INSULATION, PLYWOOD SHEATHING AT EXTERIOR, GYPSUM WALLBOARD AT INTERIOR

Supplemental Care Module - Type 3M

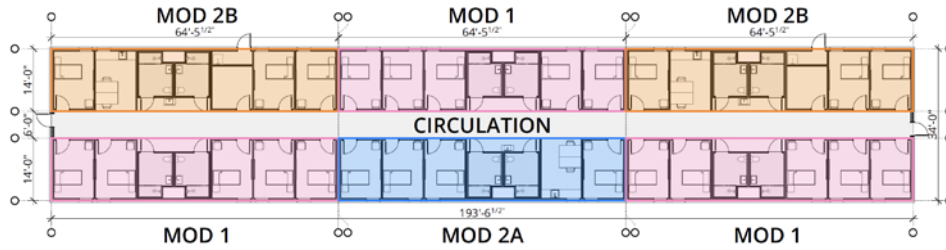


- 3'-0" WIDE ENTRY DOOR
- FURNITURE SUITE (TWIN BED, SIDE TABLE, CHAIR)
- 5'-0" DIAMETER TURNING RADIUS
- TV LOCATION
- 3'-0" WIDE CASEMENT WINDOW PROVIDES 9 SF LIGHT; 4.5 SF VENTILATION
- TYPE A BATHROOM WITH BARRIER FREE SHOWER
- GFRC AT WET FLOOR SURFACES
- SHEET VINYL FLOORING
- UTILITY CHASE WITH ACCESS PANEL

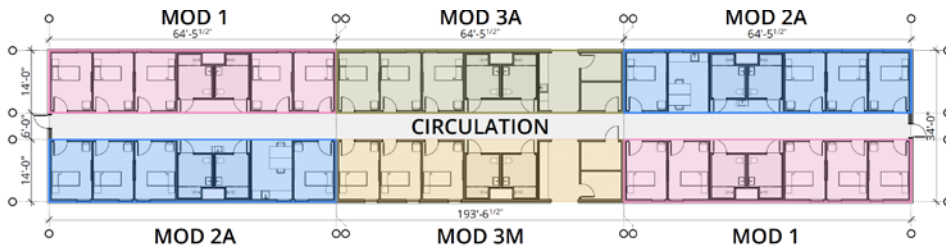
- MODULE SF - 902 SF
- TREATMENT | QUARANTINE ROOMS - 3
- ACCESSIBLE BATHROOM - 2

6' EXTERIOR WALL WITH R19 CAVITY INSULATION, PLYWOOD SHEATHING AT EXTERIOR, GYPSUM WALLBOARD AT INTERIOR

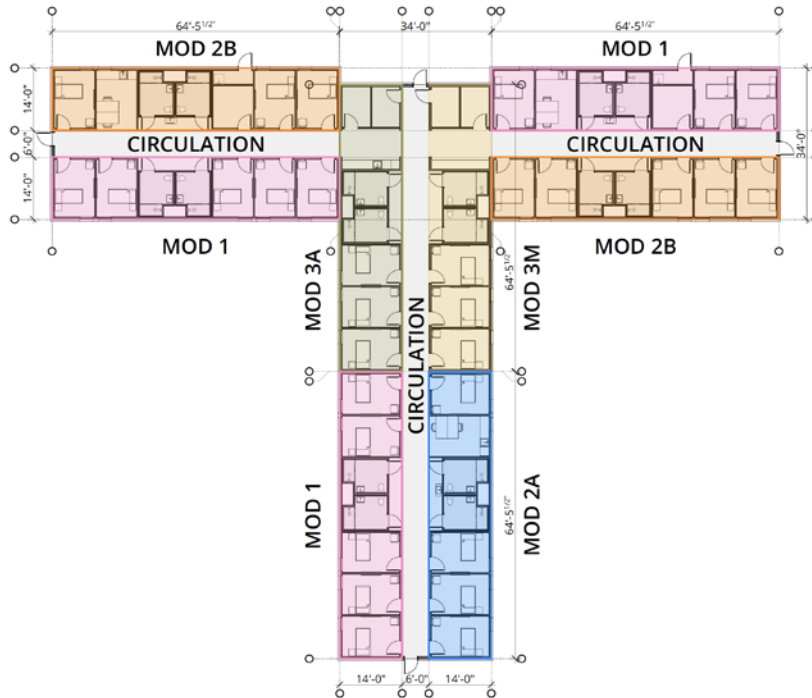
Supplemental Care Possible Building Layouts



25 UNITS, 3 MONITORING STATIONS, 10 BATHS, 2 STAFF BATH,
1 CLEAN STORAGES, 1 SOILED STORAGES, FLEX STORAGE AND UTILITIES

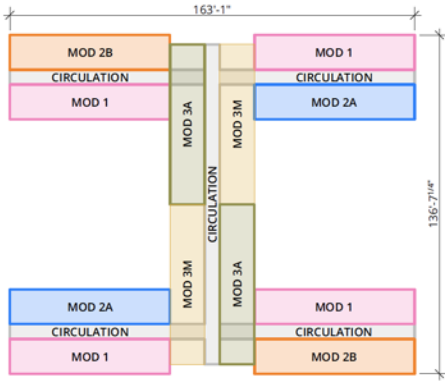


24 UNITS, 4 MONITORING STATIONS, 10 BATHS, 2 STAFF BATH,
2 CLEAN STORAGE, 2 SOILED STORAGE, FLEX STORAGE AND UTILITIES

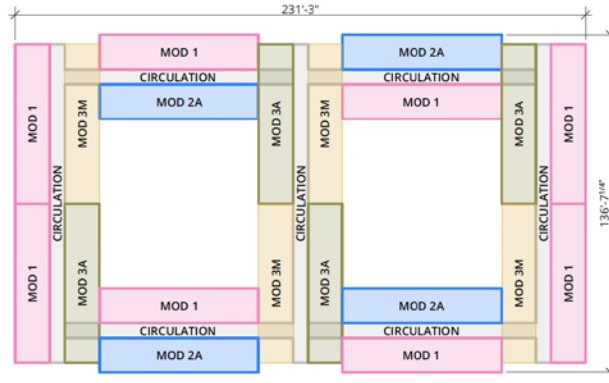


Flexible design allows units to be co-located or stacked up to 3 stories.

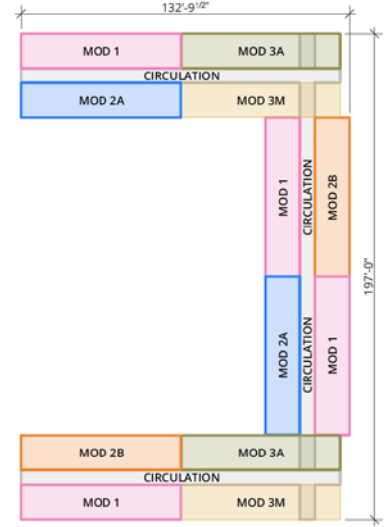
Supplemental Care Possible Multiple Building Configurations



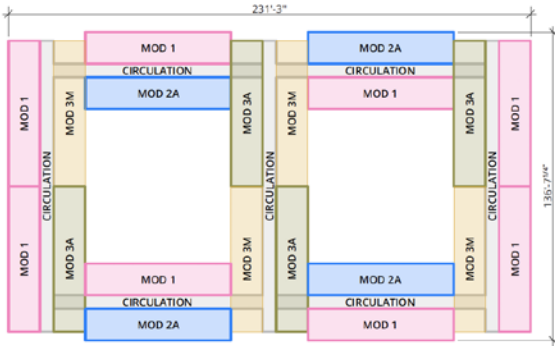
12 MODULES - 46 BEDS
.512 ACRE
89.73 BEDS / ACRE



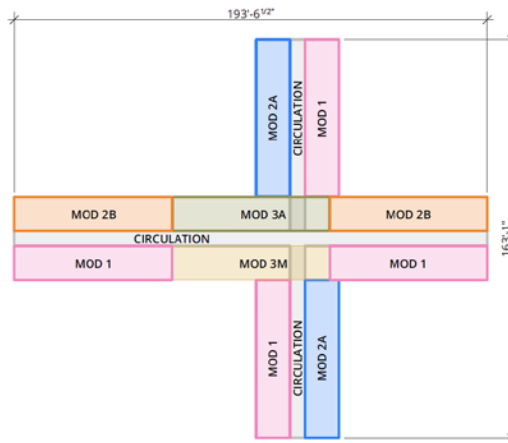
12 MODULES - 46 BEDS
.727 ACRE
85.25 BEDS / ACRE



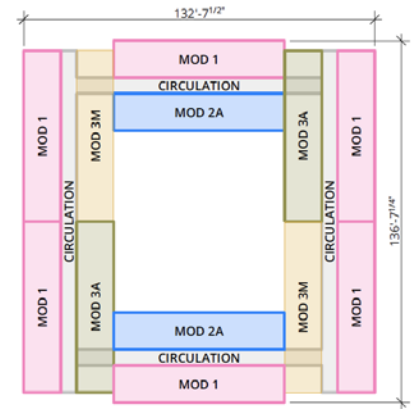
12 MODULES - 46 BEDS
.600 ACRE
76.62 BEDS / ACRE



12 MODULES - 46 BEDS
.727 ACRE
85.25 BEDS / ACRE



10 MODULES - 40 BEDS
.725 ACRE
55.17 BEDS / ACRE

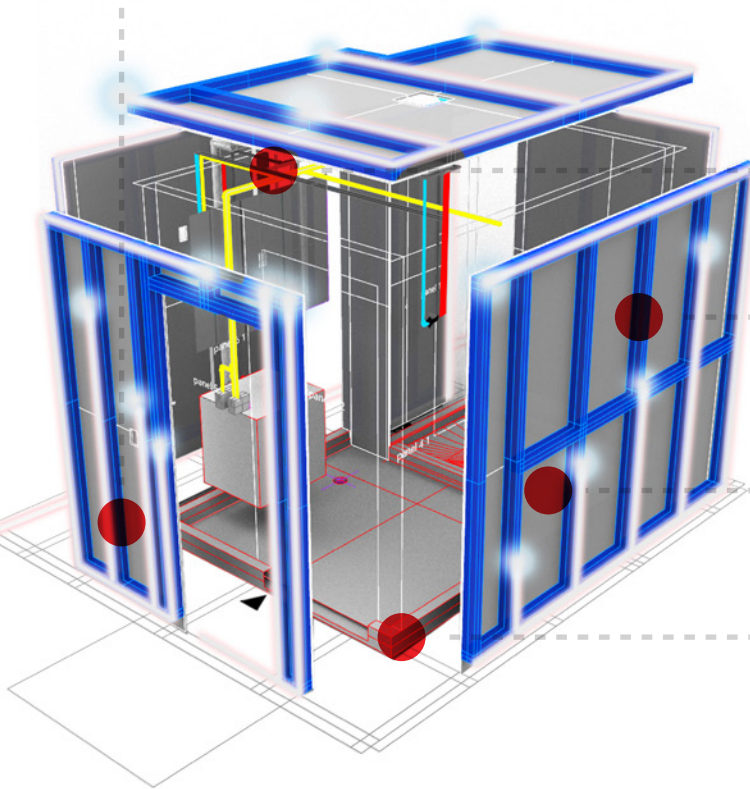


12 MODULES - 50 BEDS
.418 ACRE
119.75 BEDS / ACRE

Modular Bath Pod Technology



100% COMPLETE MODULAR BATHROOM SOLUTION



**SPLASH
MODULAR**

*Bath pods are created utilizing
Splash Modular Technology*

PLUG & PLAY MODULAR SERVICES

Pre-complete and tested electrical and plumbing assembly ready for seamless connection.

TYPE-I NON-COMBUSTIBLE CONSTRUCTION

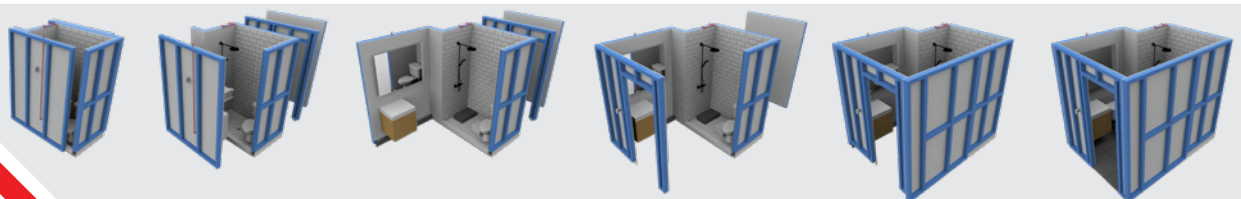
Lightweight precision cut steel frames with all service holes and notches pre-cut for easy installation

IMPERVIOUS AND INERT SURFACES

Lightweight wall construction featuring mold and water resistance with anti-microbial properties.

GLASS FIBER REINFORCED CONCRETE BASE

Lightweight and high-strength monolithic concrete bases with cast-in lifting ferrules, water drainage falls, curved edge perimeter and coving. They are slip-resistant and mold-proof.



SUPPLEMENTAL
CARE

Module Use - Supplemental Care Unit (initial use)



Module Use - Supportive Housing (future use)



SUPPLEMENTAL
CARE



The established industry of modular construction has hundreds of factories nationally, with a coalition of partners that is growing daily, poised to immediately focus their entire resources to address the U.S. healthcare crisis. Our current coalition factories span across the nation with locations in CA, IN, NC, MI, NY and PA allowing for immediate local and regional response. With thousands of employees primarily located in more rural environments, they are less effected by the spread of COVID-19 providing a more stable workforce for continuous production through the crisis.



VBC is mobilizing a coalition of industry partners with access to dozens of factories nation-wide to execute our 10X Mobilization Plan to face today's crisis head on, addressing the shortage of healthcare facilities by standardizing a I-1 designated Supplemental Care Unit (SCU). By daisy chaining these factories together with a single point of contact, we will be able to expedite the build process by 2X and increase collective output by 10X resulting in units arriving at hot spots within 2-3 weeks. We are also partnering with the Modular Building Institute (MBI), the modular industry association, to mobilize its membership of 100+ factories around the country.

VBC is the first vertically integrated business within the modular industry with 4 divisions focused on design & engineering, construction/logistics, manufacturing, and communication. Our brand growth has sustained 100%-300% per year for the last 5 years as we have continually added more companies and services to support our clients' needs in multi-family and mixed use modular construction.

Modular Coalition Members

The Commodore Corporation
 Factory_OS
 Modular Steel Systems

Ritz-Craft
 Signature Building Systems
 Simplex Industries

Volumetric Building Companies
 Westchester Modular Homes
& new members joining each day

Coalition Supporters:



Building Systems Councils



For more information, contact:

VAUGHAN BUCKLEY

President

vbuckley@vbc.co

DAVID FETZER

Project Manager

dfetzer@vbc.co



VOLUMETRIC
BUILDING COMPANIES

VBC|CONSTRUCTION
— PHILADELPHIA —

VBC|MANUFACTURING
— HAMLET —

VBC|STUDIO
— BOSTON —

VBC|CREATIVE
— INDIANAPOLIS —

538 Leverington Ave. | e: info@vbc.co
Philadelphia, PA 19128 | p: 215 259 7509

www.vbc.co