

ACCELERATE
PLANT PRODUCTION
WITH THE

NEW PROFILL V SERIES


S&I

SYSTEMS &
INTEGRATION

TechniBlend is the best source to bring beverage processing, carbonation, blending and can filling together in a single, state-of-the-art, affordable package.



TECHNIBLEND



**V =
VOLUMETRIC
ACCURACY**

The ProFill V delivers 3-times better filling accuracy than conventional fill to level can fillers. This accuracy, enhanced by AI filling technology, produces instant ROI.

AN EVER-CHANGING INDUSTRY

Today, beverage and liquid processing is currently one of the most innovative, adaptive, and fast-paced industries. With consumer demand shifting to the latest and greatest trend, it can be difficult for plants to keep up with production requirements. Volumetric filling technology allows for fully optimized accuracy that can fill at a better rate than standard mechanical fillers in the industry.



V = VERSATILE

The ProFill V is designed to fill beer, carbonated soft drinks, water, RTDs (Ready to Drink) beverages, seltzers, ciders, juices and even non-carbonated beverages.

The ProFill V can also fill both hot and cold beverages.

VOLUMETRIC FILLERS ENABLE FAST-PACED PRODUCTION

The ProFill V series of Volumetric can fillers are accelerating plant production everywhere. These can fillers run at speeds between 100 - 600+ cans per minute while achieving precise and consistent filling volumes in multiple can sizes for a variety of beverages and liquids. Monobloc design gives customers a simple, single blocked unit consisting of the state-of-the-art ProFill V filling carousel integrated with a true tangential discharge to the integrated ProFill seaming system.

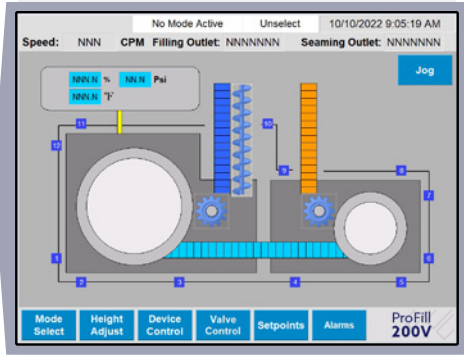


QUICK CHANGEOVER MEANS MORE VOLUME

The ProFill V Series utilizes a sophisticated electronic HMI interface for recipe-based changeovers and simple and repeatable filler operation. This means that there are shortened changeover times, leading to more overall production capability. Hygienically designed, stainless steel can handling and change parts allow for easier cleaning, quick changeover, and super smooth can transport in and out of the filler & seamer.

V = VALUE

The ProFill V series of can fillers operates at an optimal price and performance value, delivering rapid ROI for users.



REDUCE MANUAL INTERACTION WITH AI

ProFill V's embedded AI (Artificial Intelligence) digital filling technology means manual interaction is rarely needed due to the ProFill V's AI error correction algorithms always monitoring and optimizing each filling valve's performance.

EASILY CONNECT WITH OTHER BEVERAGE PROCESSING SOLUTIONS

Plus, the process system integration with industry leader TechniBlend, known for world-class beverage blending, carbonation or nitrogenation, deaeration, flash pasteurization, and any other up-stream process is fully integrated into the ProFill V filling system.



**WANT TO LEARN PRECISELY HOW
THE PROFILL V CAN ADVANCE
YOUR PLANT'S OPERATION?**

Get in contact with us!
Just scan the barcode
with your smart
device and check out
our website.



You can also reach out to us directly by
emailing contact@techniblend.com

or call us at **262.484.4090**.



TechniBlend • 21800 Doral Rd. • Waukesha, WI 53186 •
www.TechniBlend.com



©2022 ProMach Inc. ProMach reserves the right to change
or discontinue specifications and designs shown in this
brochure without notice or recourse