



Working with GP Transco

gptransco.com
(800) 669-6544
3200 Channahon Rd Joliet, IL 60436



**RETHINK
WHAT YOU
KNOW ABOUT
TRUCKING**

What We Stand For

With our priorities being safety, the satisfaction of our clients and employees, a modern approach to the industry, and environmental consciousness, our mission is:

Through collaboration, integrity, and continuous innovation, our mission is to provide outstanding logistics services in a safe and efficient manner while being a leading workplace in our industry.



GP
TRANSCO

3-Year Growth:

90%
Financial

126%
Assets

Awards & Recognitions:



Top Carrier Award



Best Company to Drive For



Best Company to Drive For



America's Top Private Fleets
Rank: #247



Best Company to Drive For



Frontlines Heroes



5 Years



samsara



5 Years



CCJ Innovator

The Value of Working with GP Transco

Asset-Based

Safe & Reliable

Technologically Advanced

Hire Outstanding Drivers

Customer Service-Oriented

Flexible: In-house Brokerage

Always On Time

Environmentally Conscious

GP Transco Features at a Glance



Automatic Load Status Updates



Historical Load Data



Driver Activity Reports



Truck Safety Features



GPS Tracking on Trucks and Trailers



Customer Active Loads Map



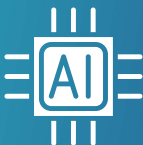
Route Optimization



One-Point Contact for Customers



Load Planning in Advance



Fleet Safety AI




Outstanding Drivers



Sitting Truck Alerts

> Learn more at gptransco.com

A person is sitting in the driver's seat of a car, holding a smartphone in their right hand. The phone screen displays a performance dashboard with various charts and data points. The car's interior, including the steering wheel, dashboard, and center console, is visible. The text "Let's take a closer look ..." is overlaid in white on the image.

**Let's take a
closer look ...**

Asset-Based Operation

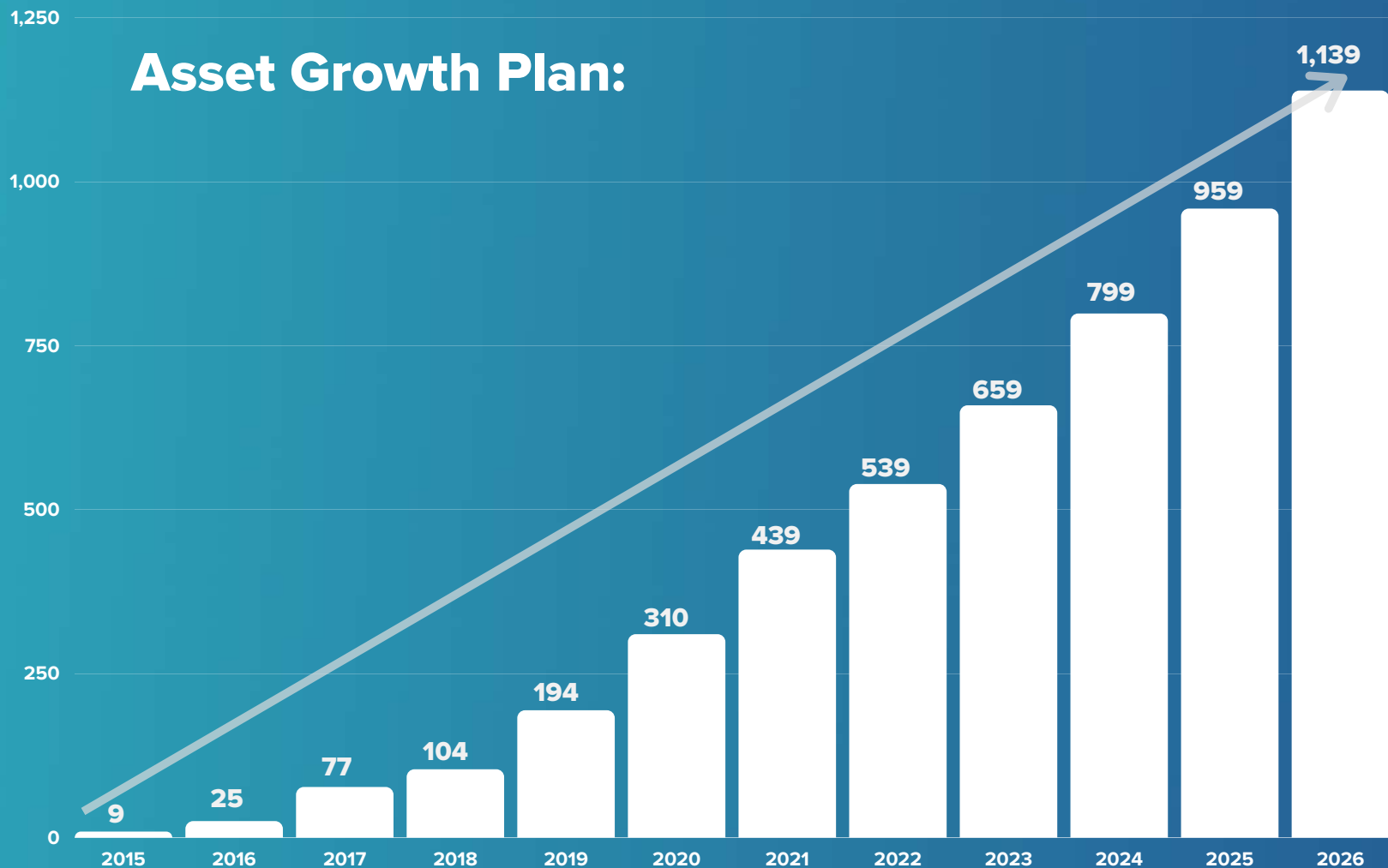
2022:

550 Trucks
750 Trailers

2023:

660 Trucks
850 Trailers

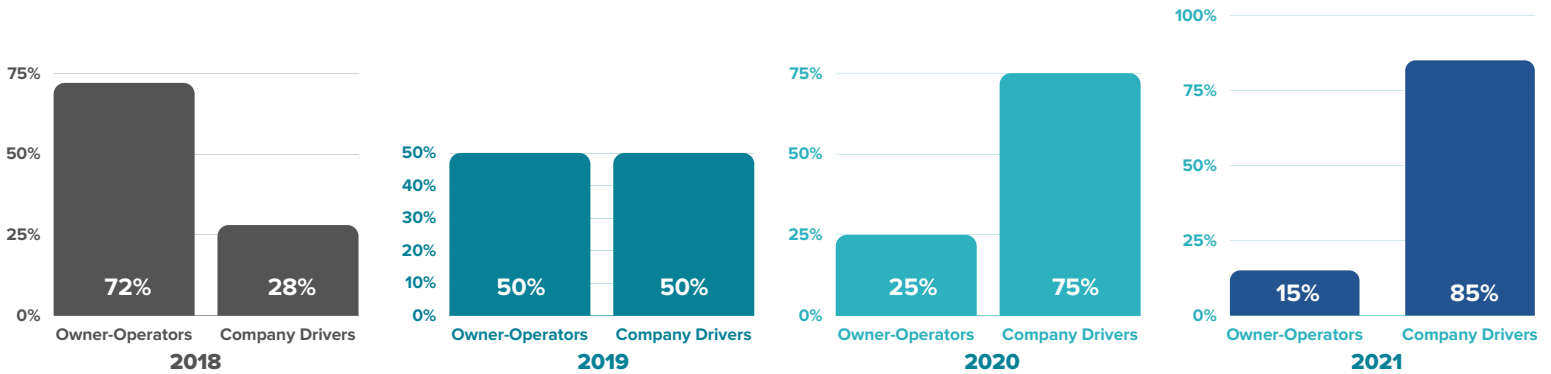
Asset Growth Plan:



Asset-Based Operation

One of the most important transitions that we have gone through in the past 5 years is moving to an asset-based fleet – this means that most of the assets (trucks and trailers) are owned by us and are driven by W2 company-drivers. This contrasts with owner-operators: truck drivers who own their own trucks and drive under our authority as independent contractors. This allows us to provide an outstanding level of transportation and logistics services, which feeds into an increase in contracted freight and long-term contracts with major customers, and provides a high level of operational control and stability.

Fleet Composition: 4-Year Progress



Best-In-Class Equipment

Fully Digital Dashboard

Full Safety Suite

EPU with Comfort Mode

In-Cab Fifth Wheel Release

State-of-the-art Trailers

Disc Brakes All-Around

Integration with in-house Systems

Aerodynamic Features

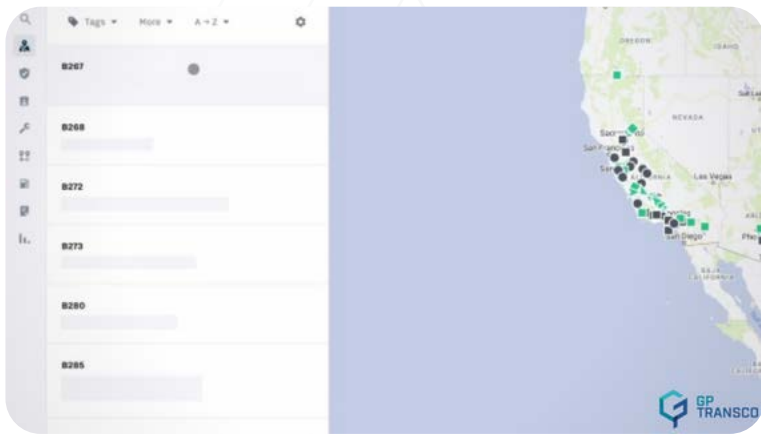
Environmental Engineering



3D Truck Walkthrough

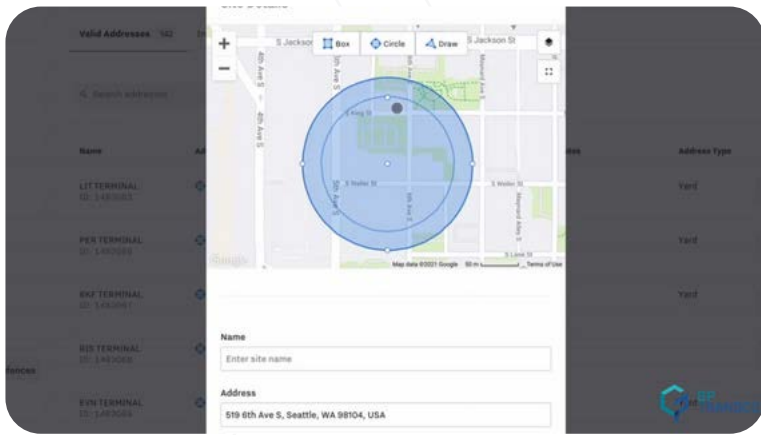


Technology & Intelligence



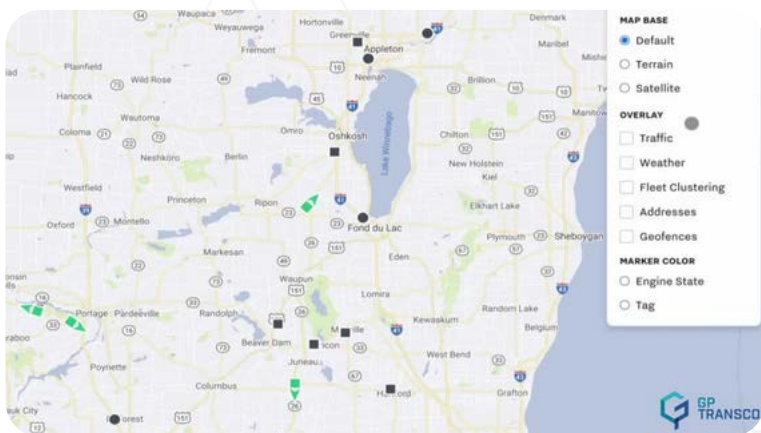
Live Location Sharing

Live location sharing allows GP Transco to deliver best-in-class customer service with live location links to equip your our with accurate ETAs. Paired with automated load status notifications, this means that you are always on top of what your freight is doing and when it will be arriving.



Advanced Geofencing

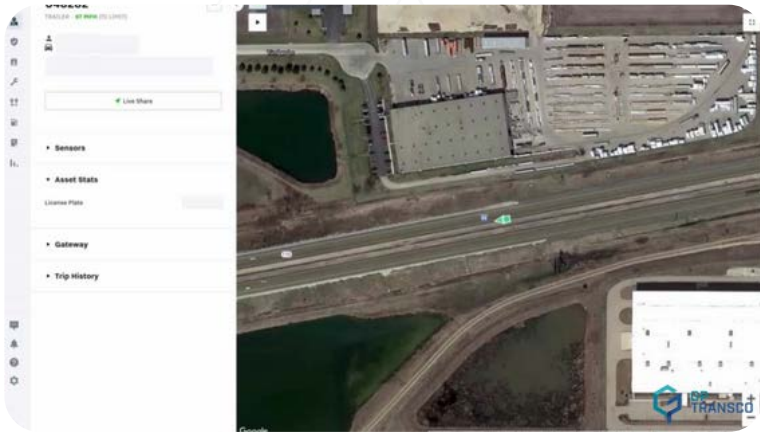
Advanced geofencing tracks the location of each truck and trailer, and automatically notifies you via text or email when our assets carrying your freight arrive and leave specific locations, or when abnormal activity occurs and delays are expected.



Smart Map Overlays

With smart map overlays, we are able to monitor weather and traffic or locate the nearest fueling stops. We can quickly adapt to changing conditions so our drivers can stay on schedule, making sure your freight is safely delivered on time.

Technology & Intelligence



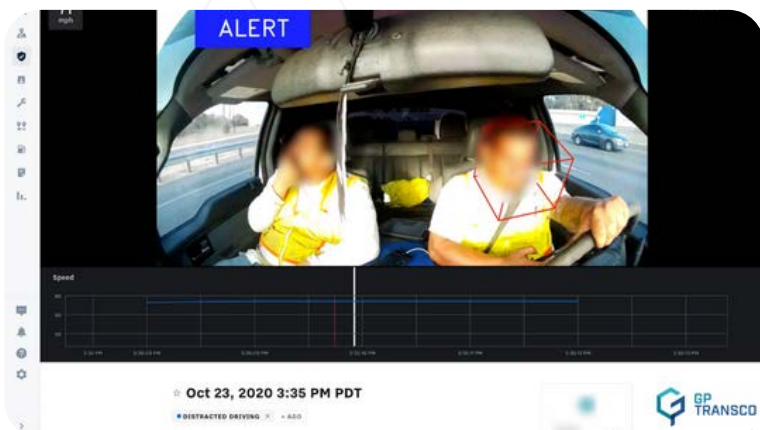
Real-Time GPS Tracking

A real-time, GPS tracking helicopter view eliminates guesswork with an instant aerial view of your freight. This easily aids route navigation and helps dramatically increase the security of your freight.



Smart Route Optimization

Smart route optimization allows us to plan and analyze routes and stops and evaluate data on their performance to identify deviations and pinpoint trends to make sure that your freight is traveling in the fastest possible way.



AI Driver Behavior Monitoring

Distracted driving is continuously and automatically tracked with Samsara's AI video-evidence, data-driven in-cab system. The system tracks the motion of every driver, notifying our safety team of potential distracted driving behaviors and/or when a driver might be fatigued.

Technology & Intelligence



HOS + Real Time Traffic = Precise ETA

Combining the hours of service data of each GP Transco driver with real time traffic data means that we are able to calculate a highly precise time of arrival for every GP Transco truck and for each customer load.



Safety Machine Learning

Advanced machine learning evaluates the safety of each GP Transco drivers, allowing us to be extremely selective when it comes to picking which trucking professionals will be responsible for delivering your loads.

Advanced Integration:



AI Harsh Event Recognition

Instant Event Notification to Safety Manager

Smart Accident Prevention

Complete DOT Compliance

Integration with our in-house Systems





**OPEN
ROAD**

Our in-house Developed Transportation Management System

Even in our early days, we knew that an off-the-shelf transportation management system (TMS) would not meet the demanding needs of our customers, employees, and management. That is why in 2013 we decided to build a custom, cloud and web-based TMS from scratch. Having our own TMS provides us with unparalleled flexibility to meet any business challenge that may come our way and provides a unique situational awareness – this is one of the main things that differentiates GP Transco from other carriers.

We have a single, secure place where all our customer, load, driver, truck and trailer information is stored and easily accessed, housed in a highly secure manner. From load entry to billing, the life cycle of a load is easily tracked by employees and customers alike. Customers see their loads in real-time and are provided with up to the minute updates as the load progresses from shipper to receiver. In the event of any delays due to adverse weather, mechanical breakdowns, or any other unexpected issues, customers are automatically notified so that they can plan for adjustments on their end.

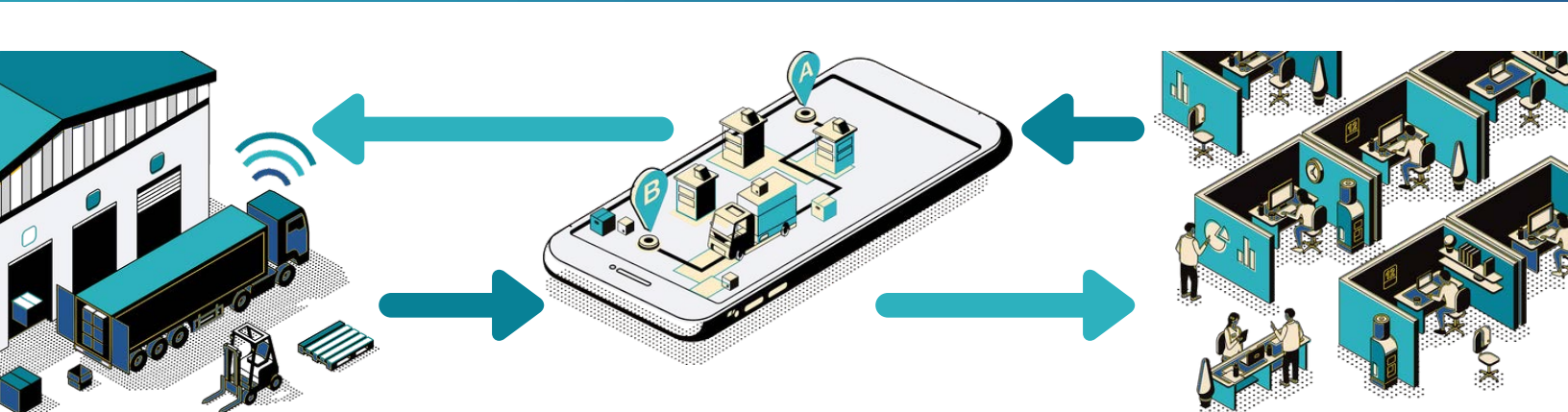
As soon as a load is delivered, the customer receives a notification, a copy of a proof of delivery (POD) and is invoiced within minutes (with many carriers it takes days to invoice a customer). This allows us to minimize the delivered-to-billed time to minutes and start the accounts receivable (AR) clock with essentially zero delay.

Our drivers access their load information through an in-house developed mobile app, which makes the process of accepting a load and getting on their way extremely efficient. Our office staff can manage our fleet efficiently due the high-level of visibility throughout the application. Easy to use dashboards immediately point out trouble spots in the entire system, which can then be drilled down to a detailed level to see what the underlying issue is.

Fleet managers can efficiently allocate capacity to customers based on truck distance from shipper, driver availability, driver time and preference, available hours of service, etc. Fleet Managers are assisted by algorithms to ensure the most optimal decision is made. As a result, we are able to minimize the number of trucks that are waiting for a load, and make sure our trucks get to their destination in the most efficient and safe manner possible.



See OpenRoad TMS in Action



Outstanding Drivers

Being selective about our drivers is key.

In 2021:

18,000 Drivers applied to drive with GP Transco

Only 4% Made it through the qualification process



Average Experience: **13 YEARS**

GP Transco: Overall Driver Satisfaction:*



Industry Average: Overall Driver Satisfaction:*



**Happy Drivers =
Outstanding Service**



GP Transco is one of the best companies to work at for drivers

-FreightWaves

GP Transco is the best trucking company to drive for

-Smart Trucking

GP Transco is a Top Workplace in 2021

-Chicago Tribune

Facebook: 4.7

Google: 4.4

Indeed: 4.2

Glassdoor: 4.4

Operating During COVID-19



Transporting PPE

HIGHLIGHT: 24 GP Transco trucks and trailers lining up at the Chicago Rockford International Airport, getting loaded with 600,000 pounds of essential medical supplies. April 2020.

For Earth's Sake...

For Earth's Sake...

At GP Transco, we are dedicated to minimizing our carbon footprint in ways ranging from custom-ordered trucks built to our specific efficiency standards, to ensuring our in-house fleet maintenance facility is using the latest technologies and most environmentally friendly fluids and chemicals.

In 2021 we set an objective to become greener and overall lower our CO2 emissions. With our FUEL (Fuel Utilization Efficiency Leaders) bonus program, which financially rewards our fuel-efficient drivers, and our investment in fuel-efficient semi trucks, we increased our fleet's mpg by 4.65% from 7.03 mpg to 7.26 mpg. This saves approximately 205,281 gallons of fuel each year; to put this in perspective, that is 3 full-size Olympic swimming pools. We cut CO2 emissions by 30 million pounds. It would otherwise take a forest the size of a city of Chicago an entire year to absorb this amount of CO2 emissions.

We are proud of the fact that all of our equipment is SmartWay certified, and all of our new trucks are equipped with electric power units (EPUs) – these are systems that allow drivers to stay warm on winter days and cool on summer days when sleeping in their parked truck without the need to idle and burn extra fuel. We are currently testing solar panels on 10 of our semitrucks, which have the potential to further reduce our carbon footprint.

We partner with various component manufacturers and OEMs to test and commercialize emerging technologies that further reinforce our commitment to environmental responsibility.

In 2021, we:

Improved our fleet's fuel consumption to:

7.26 MPG

Compared to 7.03 in 2020

Which saved:

205,281

Gallons of fuel

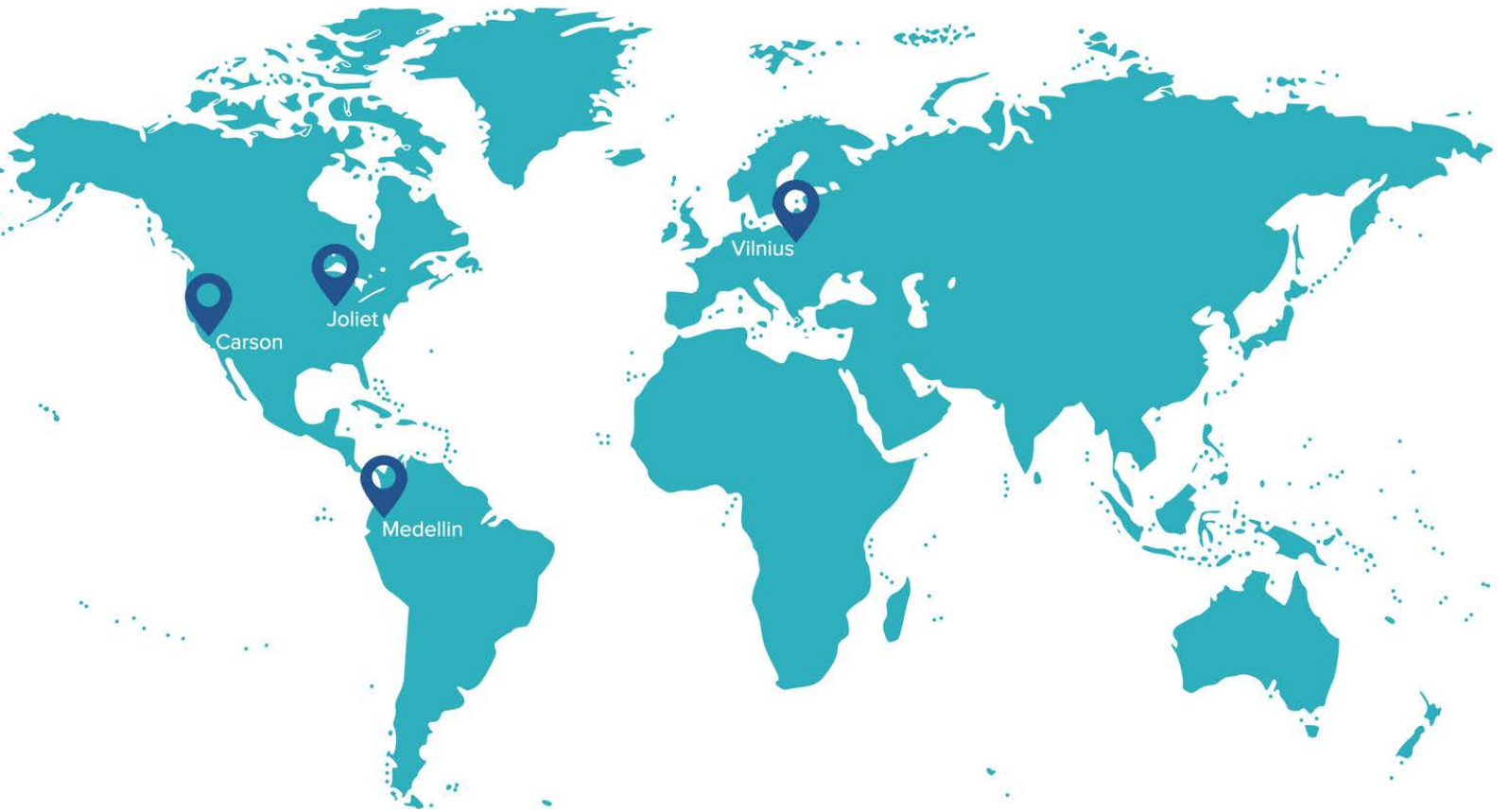
And cut emissions by:

30,000,000

Pounds of CO2



GP Transco Offices



Branding & Public Relations

Today, there are hundreds of thousands of for-hire carriers in the United States, and standing out in the crowd is crucial. That is why it is important to communicate with prospective truck drivers and potential customers in an effective and creative manner. At GP Transco, we invest heavily into branding and public relations in order ensure our brand is properly presented to the right audience in the right place and at the right time.

In 2021, we saw a...

38% increase in traffic to our website

300,000 web page visits

80% of users were new to our website

2,500,000 people reached by GP Transco on Facebook

220% increase of our overall social media reach (Facebook, Instagram, LinkedIn)

GP Transco Leadership

Our executive team consists of individuals with a deep level of expertise in trucking and transportation, as well as first-hand knowledge of industries such as IT, software, aviation, consumer goods, marketing, maintenance, healthcare, and business management. This allows us to have a unique organization where ideas from many industries are brought together and are implemented to create significant competitive advantage in the transportation industry.



Dominic Zastarskis
CEO



Gedas Poviliunas
President



Amos Savickas
Executive VP Operations



Brett Wilkie
VP of Maintenance & Safety



Ivy Posada
VP of HR & Talent Acquisition



Sergey Bort
VP of Marketing & Strategy



Joe Miller
VP of Finance



Eric Dubilis
VP of Brokerage & Sales



Dalia Svirnickiene
VP of Engineering



**GP
TRANSCO**

RETHINK WHAT YOU KNOW ABOUT TRUCKING

Working with GP Transco

gptransco.com
(800) 669-6544
3200 Channahon Rd Joliet, IL 60436