



For more information on LED Screens,
please visit www.yuchip-led.com

SHENZHEN YUCHIP ELECTRONIC CO., LTD
 Address: A3 Building, Fuwei 2nd Industrial Park, Fuyong Town, Bao'an District,
 Shenzhen, 518100, China.
 Tel: +86 755 2359 2989 Fax: +86 755 3350 3179 Email: marketing@yuchip.com
©2021 SHENZHEN YUCHIP ELECTRONIC CO., LTD All Rights Reserved.

Ver.2021

LED DISPLAY CATALOG

Outdoor & Indoor Commercial Series



OUR WORK

Strive to contribute value to "Show The Wonderful World" by exporting quality LED displays all over the world!

Who We Are

Founded in 2004, YUCHIP is an award-winning global LED display supplier headquartered in Shenzhen, China. As a comprehensive LED display manufacturer, we focus on offering top-notch technology and high-performing visual products. Our great range of LED displays includes outdoor LED display, indoor LED screen, rental LED display, transparent LED display, LED poster, flexible LED display, HD LED screen, mobile LED video screens, LED wall controller, and more.

How We Do

YUCHIP owns 15000 square meters of factory area, and every LED display is manufactured by our skilled team using state-of-the-art techniques and equipment. It's then hand-checked against a stringent quality control list to ensure it meets our very high standards. Furthermore, as an LED video wall manufacturer, our management system complies with ISO9001-2015, and the outstanding LED video screens are certified by CE, RoHS, CCC, FCC, TUV, BIS with a 3-5 years warranty.

Where We Go

Our team of 260 staffs has decades of industry experience that enable us to provide the superb solution for customers pick and choose from. Meanwhile, as LED screen manufacturer, YUCHIP has successfully exported LED displays to over 102 countries worldwide. YUCHIP is committed to supporting customers with responsive service and rapid delivery, so we opened branch offices in Germany, Hungary, and Peru, authorized dealers in America, Italy, Malaysia, and Thailand, etc. The Dubai branch office will also start soon.

Since YUCHIP startup, our mission and delight are to help customers transfer any and every desired space into the digital world.

Certificates



Workshop pictures



Automatic production equipment

We gather a large number of technician and experts with rich experience in LED display, relying on the advanced experimental facilities and automatic product line, it constantly devotes itself to the innovation and upgrade of product so as to give customers stable and optimal visual experience.

Footprint as Global LED Screen Supplier

Yuchip's quality LED screen has been exported to over 102 countries since 2004.

- 2014, well done the largest outdoor HD LED screen in Hanoi, Vietnam, 140sqm OF P5
- 2015, successfully built the biggest cricket stadium LED display in Hyderabad, India, 185sqm OF P16
- 2016, accomplished the largest LED screen in Latin America located in Lima, Peru, 402sqm OF P16
- 2017, honorably supplied 1.8m LED sphere display and flexible LED screen for World Expo Astana 2017
- 2017, authorized as key LED screen supplier in the 17th Fina World Championship Budapest, 200sqm P4.8 rental LED display, 350sqm P8 perimeter LED screen, and 280sqm P5.95 LED scoreboard
- 2018, ideally supplied and installed the largest group of trailer LED video screen in Berlin, Germany, 655sqm OR P5 in 4 groups
- 2019, successfully manufactured and delivered a 3.6m LED display ball for Argentina National Museum

Whether you are a large organization looking to rebrand multiple locations across the country or a smaller business looking to create one showstopper LED display for your business location, we can help.



Table Of Contents

Outdoor Fixed Installation Rear Maintenance	--01--04
Outdoor Fixed Installation Front Maintenance	--05--10
Indoor Fixed	-----11--14
HD Indoor	-----15--20
HD Indoor 640 × 480mm	-----21--24

Outdoor Fixed Installation Rear Maintenance

High-Definition LED Screen · Visual Shock

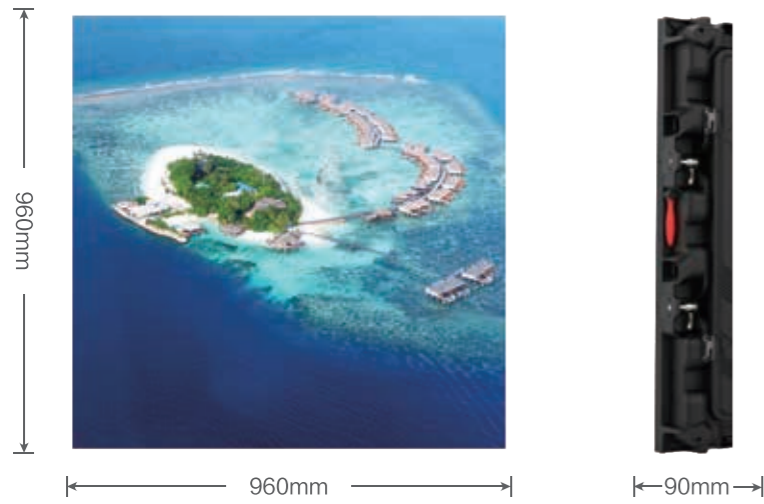
High brightness and high gray Picture quality upgrade



HD giant screen Beautiful picture quality Vivid colors Highlight wide angle



Pixel Pitch (PH)	P3		P4		P5		P6		P8		P10	
Module Size (mm*mm)	192*192		320*160		192*192		320*160		192*192		320*160	
Module Resolution (pixels)	64*64		80*40		64*32		32*32		40*20		32*16	
Cabinet Size (mm*mm)	960*960*90 / Customized											
Scan Mode	1/10		1/8		1/4		1/3		1/2			
Pixel Configuration	3 in 1											
LED lamps	SMD1415		SMD1921		SMD2727		SMD3535					
Pixel density (pixel/m ²)	111111		62500		40000		27777		15625		10000	
Brightness (cd/ m ²)	6000-6200		6200-6500		6500-6800		6800-7500					
Max Consumption (W/m ²)	800		750		800		700		800			
Ave Consumption (W/m ²)	280		260		280		240		280			
Cabinet weight (kg)	30											
Maintenance	Rear Side											
Cabinet material	Die Casting Aluminum / Steel / Aluminum											
Front/Rear IP Level	IP65 / IP54											
Color contrast ratio	5000:1											
Gray Grade	16bit											
Refresh Frequency (Hz)	1920HZ / 3840HZ											
Repetition Frequency (Hz)	50/60HZ											
View angle(V/H)	140° / 140°											
Best viewing distance (m)	3		4		5		6		8		10	
Working Voltage	AC110 / AC220V											
Working temperature(°C)	-30 ~ +80°C											
Operation humidity (RH)	0-95%											
Display Lifetime (hours)	≥100000											



Weight 30kg

Features

- IP65
- 5000:1 High contrast rate
- Super wide viewing angle
- High gray scale
- High brightness up to 10000 nits
- Automatic brightness adjustment for day and night

Lightweight / Ultra-thin

Easy installation
Cost-saving in labor and structure
Flexible and seamless to make a giant screen



5000:1 High contrast rate

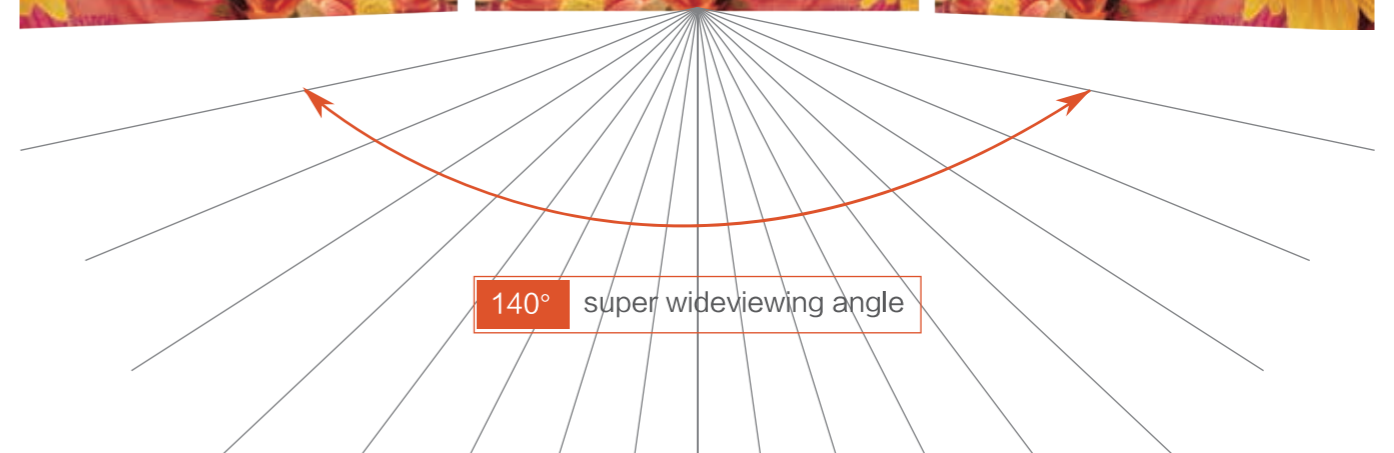
Richer colors, clearer and more delicate picture quality

Smart splicing

Intelligent splicing of pictures, splicing in any combination



Ultra wide viewing angle Give you a new experience



Outdoor Fixed Installation Front Maintenance

SUPER REAL EXPERIENCE



Pixel Pitch (PH)

P4.81

P5.95

P6.67

P8

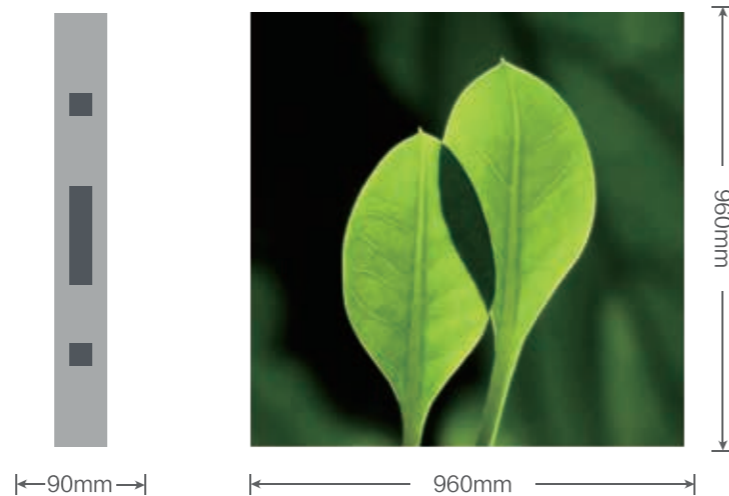
P10

P16

Module Size (mm*mm)	250*250		320*320			
Module Resolution (pixels)	52*52	42*42	48*48	40*40	32*32	20*20
Cabinet Size (mm*mm)	Customized					
Scan Mode	1/10		1/4		1/2	Static
Pixel Configuration	3 in 1					
LED lamps	SMD1921		SMD2727	SMD3535		DIP346
Pixel density (pixel/m ²)	43402	28224	22500	15625	10000	3906
Brightness (cd/ m ²)	5500 (6000 Optional)		6500 (7000 Optional)		6500 (7300 Optional)	8500
Max Consumption (W/m ²)			750			900
Ave Consumption (W/m ²)			260			350
Cabinet weight (kg)	42					
Maintenance	Front / Rear Side					
Cabinet material	Steel / Aluminum					
Front/Rear IP Level	IP65 / IP54					
Color contrast ratio	5000:1					
Gray Grade	16bit					
Refresh Frequency (Hz)	1920HZ / 3840HZ					
Repetition Frequency (Hz)	50/60HZ					
View angle(V/H)	140° / 140°					
Best viewing distance (m)	5	6	7	8	10	16
Working Voltage	AC110 / AC220V					
Working temperature(°C)	-30 ~ +80°C					
Operation humidity (RH)	0-95%					
Display Lifetime (hours)	≥100000					

Features

- IP65
- Full front maintenance
- High efficiency
- High gray scale



Weight 42kg

High definition

High-definition resolution, the details are clearly visible



Full front maintenance

Easy access, saving screen back-space

HD LED Screen



SUPER REAL EXPERIENCE

Case show



P16 In South America



P10 In France



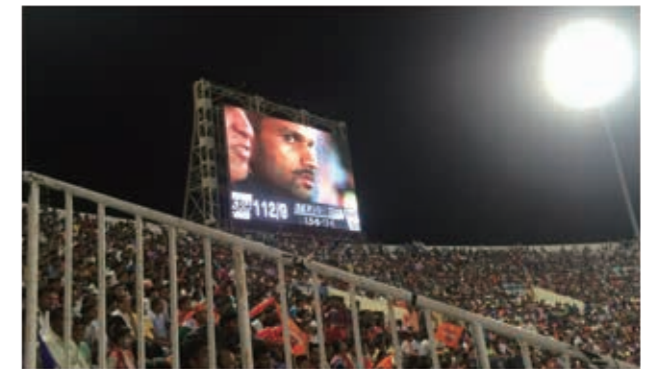
P8 In Belgium



P6 In Vietnam



P6 In USA



P10 In India

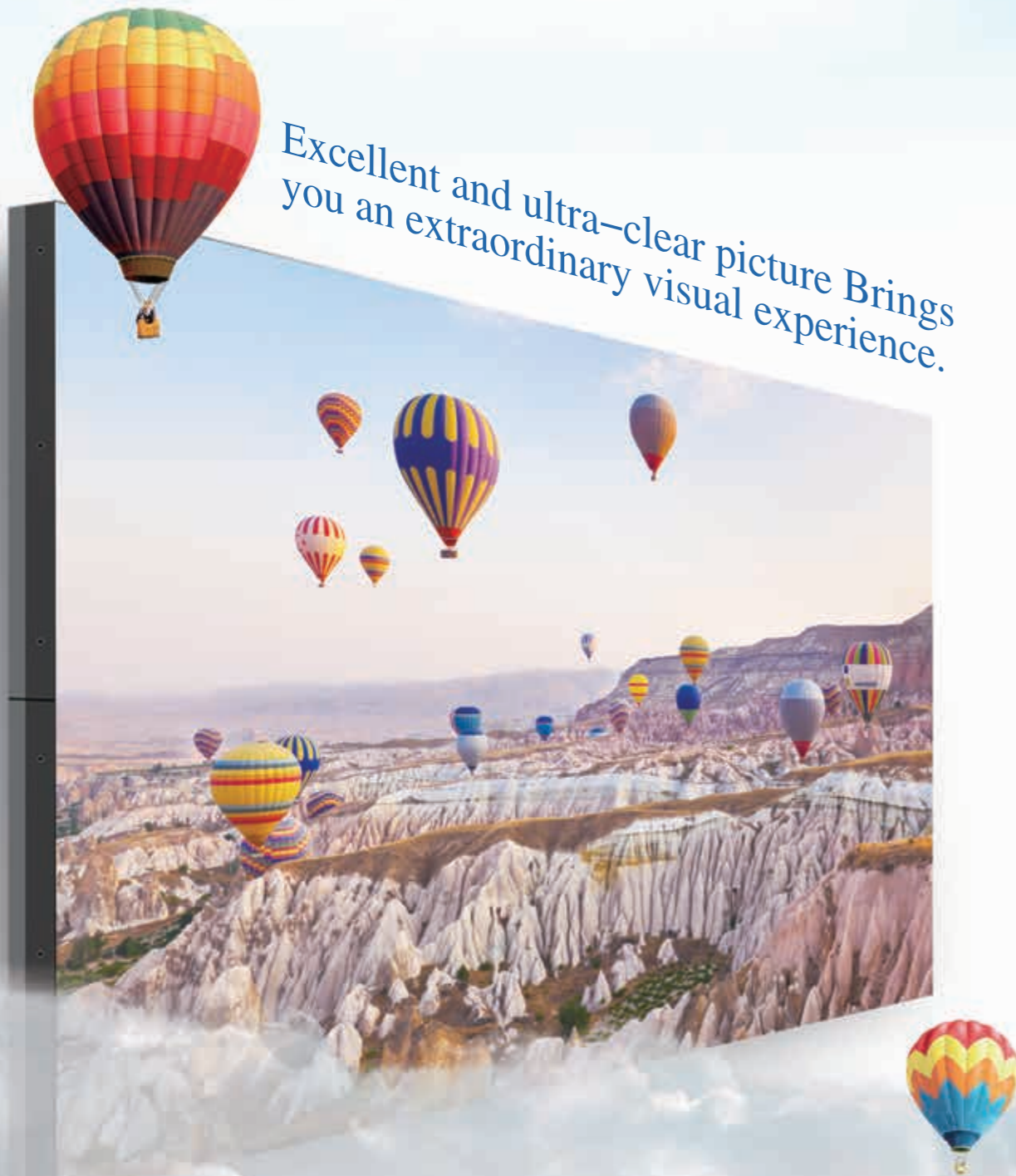


P6 In Hungary

Indoor Fixed



Excellent and ultra-clear picture Brings you an extraordinary visual experience.



Pixel Pitch (PH)	P2.5	P3	P4	P5
Module Size (mm*mm)	320*160	192*192	256*128	320*160
Module Resolution (pixels)	128*64	64*64	64*32	
Cabinet Size (mm*mm)	Customized			
Scan Mode	1/32		1/16	
Pixel Configuration	3 in 1			
LED lamps	SMD2121			
Pixel density (pixel/m ²)	160000	111111	62500	40000
Brightness (cd/ m ²)	900	1000	1000 (1600 Optional)	1200 (1600 Optional)
Max Consumption (W/m ²)	600	550	600	
Ave Consumption (W/m ²)	200	180	200	
Cabinet weight (kg)	7.2	6	6.5	
Maintenance	Front Side			
Cabinet material	Steel / Aluminum			
Front/Rear IP Level	IP45			
Color contrast ratio	5000:1			
Gray Grade	14bit			
Refresh Frequency (Hz)	1920HZ / 3840HZ			
Repetition Frequency (Hz)	50/60HZ			
View angle(V/H)	160° / 140°			
Best viewing distance (m)	2.5	3	4	5
Working Voltage	AC110 / AC220V			
Working temperature(°C)	-30 ~ +80°C			
Operation humidity (RH)	0-95%			
Display Lifetime (hours)	≥100000			



Customized

Features

- Super wide viewing angle
- High gray scale
- High refresh rate
- High contrast rate

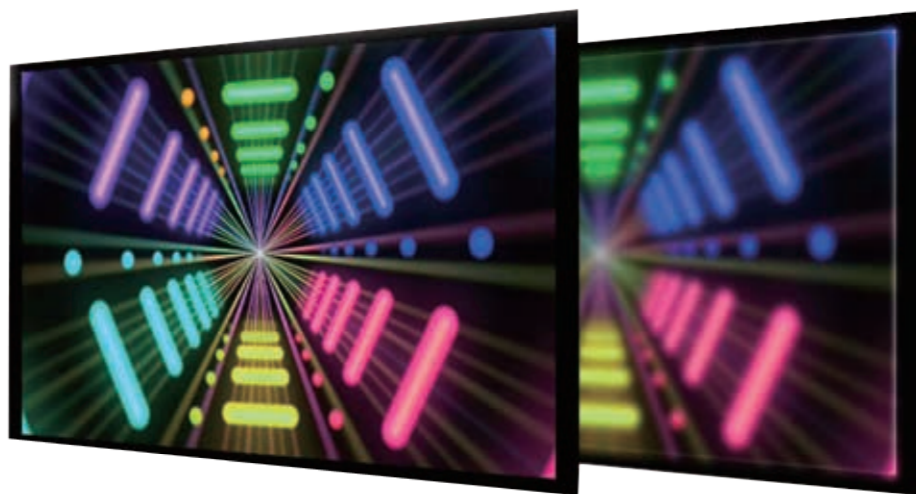
Weight 7.2 / 6 / 6.5kg



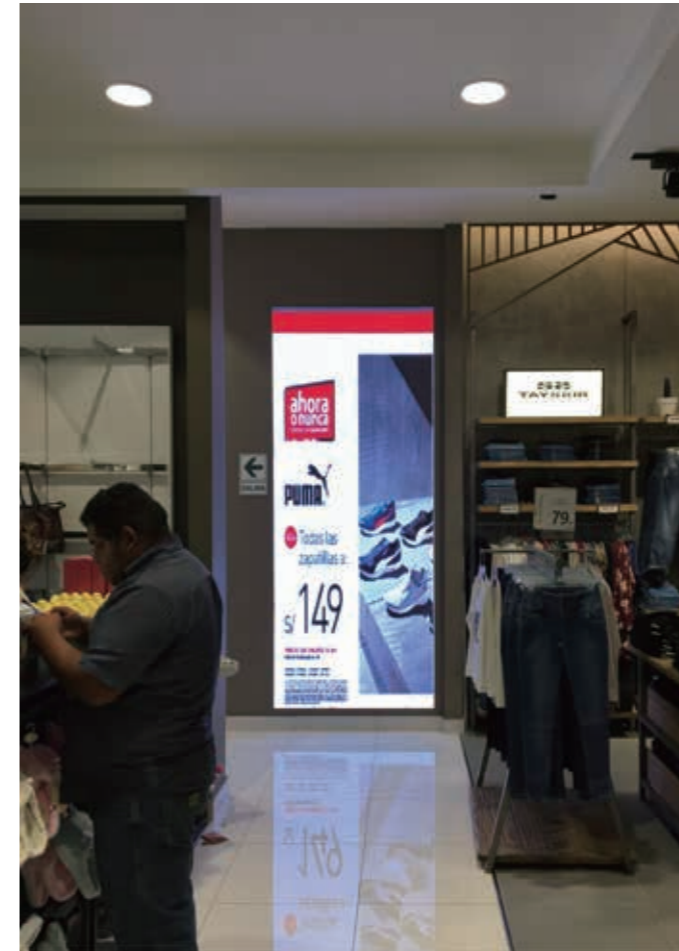
High contrast rate

High refresh rate, switching does not flicker

High refresh rate, the screen display has no smearing, no flicker, and the screen display is stable.



Case show



P3 In USA



P2.5 In Dubai



P2.5 In Peru



P6 In Thailand



P4.8 In Hungary

HD Indoor

Wide viewing angle extension, no distortion of internal viewing image, no distortion of color

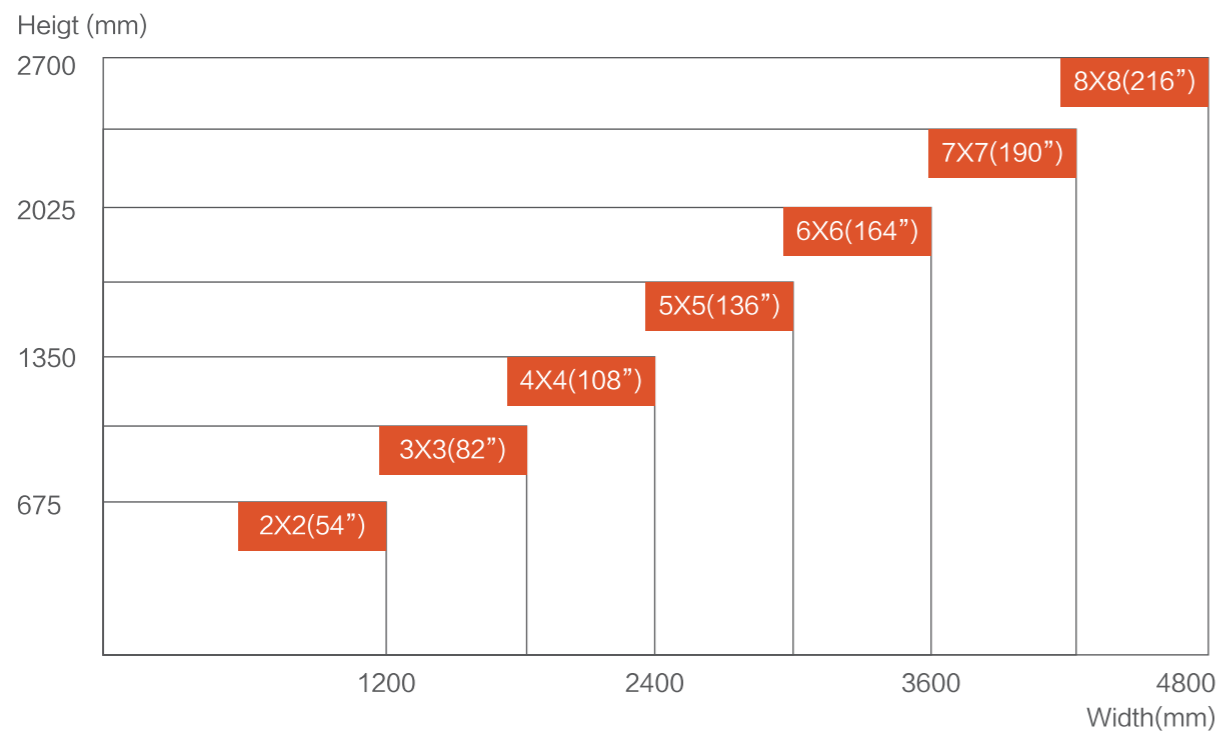
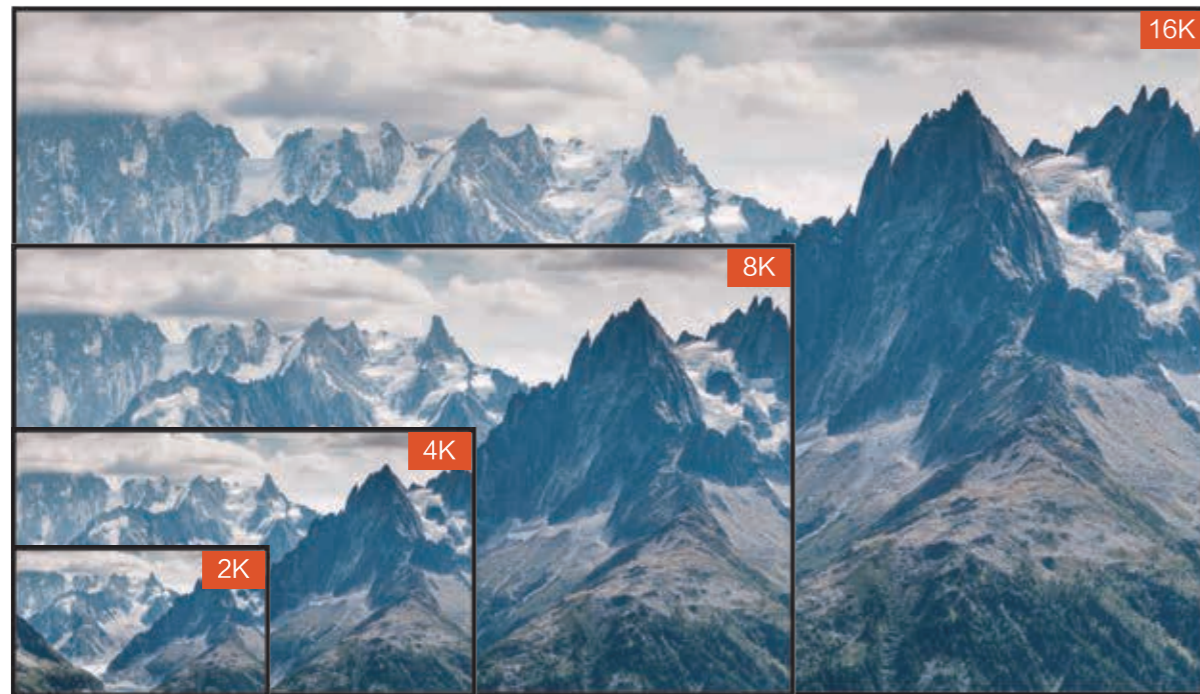


Pixel Pitch (PH)	P0.63	P0.77	P0.9375	P1.25	P1.5625	P1.875	P2.08
Module Size (mm*mm)	304*342	384*432	160*180	120*135	96*108	80*180	72*162
Module Resolution (pixels)	480*540	42*42	150*168.75			150*337.5	
Cabinet Size (mm*mm)	608*342	293*333	600*337.5				
Scan Mode	Constant current		1/30	1/27		1/30	
Pixel Configuration	COB		Mini 4 in 1	3 in 1			
LED lamps	COB		Mini 4 in 1	SMD1010			SMD1515
Pixel density (pixel/m ²)	2519512	1686621	1137778	640000	409600	284444	230400
Brightness (cd/ m ²)	600-700		800				
Max Consumption (W/m ²)	490	540					
Ave Consumption (W/m ²)	170	180					
Cabinet weight (kg)	7.2	6	7.5				
Maintenance	Front Side						
Cabinet material	Die Casting Aluminum						
Front/Rear IP Level	IP54						
Color contrast ratio	10000:1						
Gray Grade	16bit						
Refresh Frequency (Hz)	3840HZ						
Repetition Frequency (Hz)	50/60HZ						
View angle(V/H)	170° / 170°		160° / 160°				
Best viewing distance (m)	0.5		1	1.5		2	
Working Voltage	AC110 / AC220V						
Working temperature(°C)	-30 ~ +80°C						
Operation humidity (RH)	0-95%						
Display Lifetime (hours)	≥100000						

Features

16:9 2K 4K 8K 16K

- HD
- Full front maintenance
- Dual system
- Super wide viewing angle
- High gray scale
- 16:9 design



High refresh rata



High refresh rata

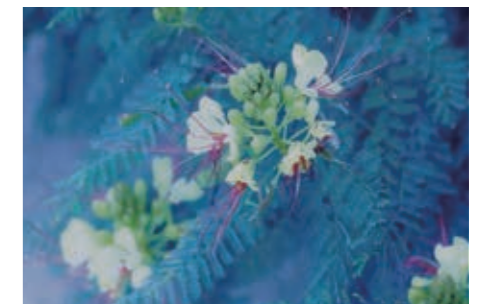


Low refresh rate

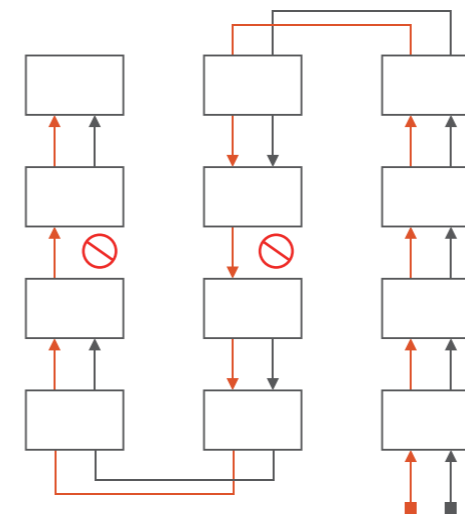
High gray rate



High gray rate



Low gray rate



Dual data& dual power back up

Redundant power supply design,dual signal input,auto-matically detecting the failure and switch,ensure the whole system's stability and reliability

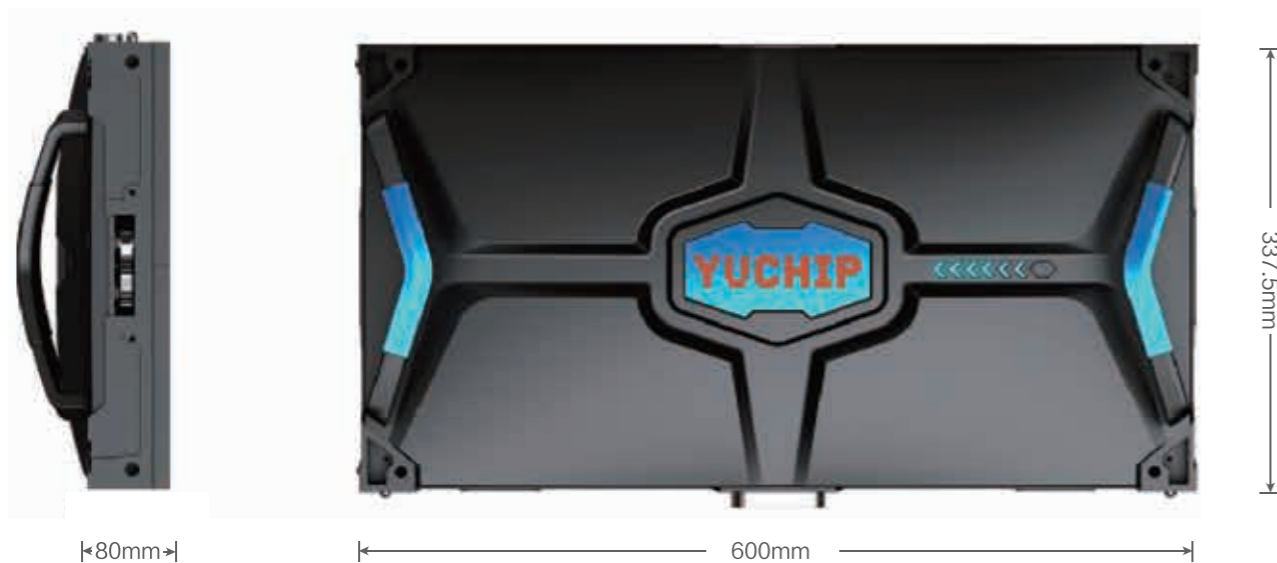
Noise reduction process

Pleasing to the eye, intelligent noise reduction





- 
HD
- 
Front & back maintenance
- 
Dual system
- 
Quick installation
- 
Super wide viewing angle
140°
- 
Silent operation
- 
High gray scale



Weight 7.5kg

- Seamless** High precision Die cast aluminum cabinets can make seamless splicing. Curved installatin is available to meet all of the unique requirements.
- Dual system** Automatic detecting function real time supervises the failure and switches to backup signal,ensure the whole system's stanility and rellability.
- Easy maintenance** Full front maintenance supports wall-mounting and inlay-mounting,save space.

Case show



P1.5625 In Algeria



P1.875 In Korea



P1.25 In LiaoNing

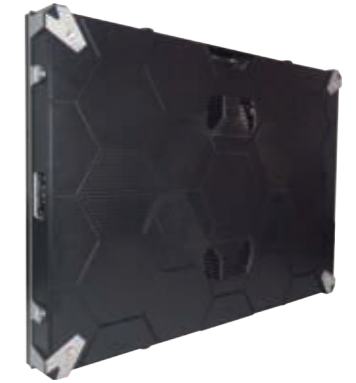


P2 In Laos

HD Indoor 640x480mm



Quality assurance, rest assured



Pixel Pitch (PH)	P1.66	P1.86	P2	P2.5
Module Size (mm*mm)	320*160			
Module Resolution (pixels)	192*96	172*86	160*80	128*64
Cabinet Size (mm*mm)	640*480			
Scan Mode	1/48	1/43	1/40	1/32
Pixel Configuration	3 in 1			
LED lamps	SMD1212	SMD1515		
Pixel density (pixel/m ²)	360000	288888	250000	160000
Brightness (cd/ m ²)	600-700	600-700	800	800
Max Consumption (W/m ²)	550			
Ave Consumption (W/m ²)	180			
Cabinet weight (kg)	11			
Maintenance	Front Side			
Cabinet material	Die Casting Aluminum			
Front/Rear IP Level	IP45			
Color contrast ratio	10000:1		5000:1	
Gray Grade	16bit			
Refresh Frequency (Hz)	3840HZ			
Repetition Frequency (Hz)	50/60HZ			
View angle(V/H)	160° / 140°			
Best viewing distance (m)	1.5	2	2.5	
Working Voltage	AC110 / AC220V			
Working temperature(°C)	-30 ~ +80°C			
Operation humidity (RH)	0-95%			
Display Lifetime (hours)	≥ 100000			



Features

- Full front maintenance
- Super wide viewing angle
- High gray scale

Weight 11kg

Case show

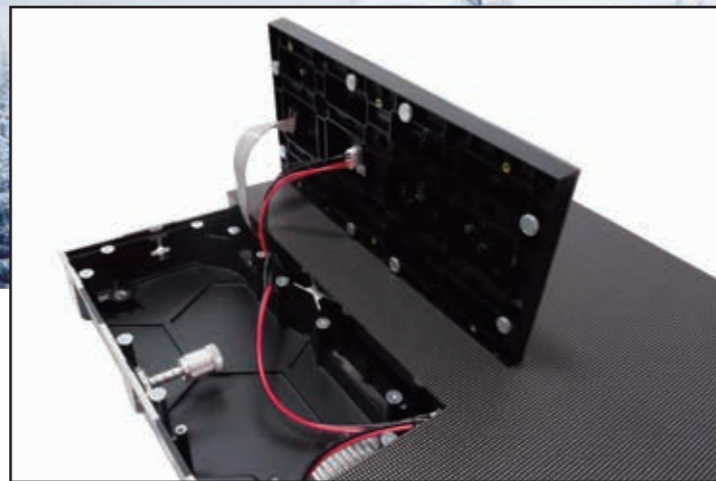
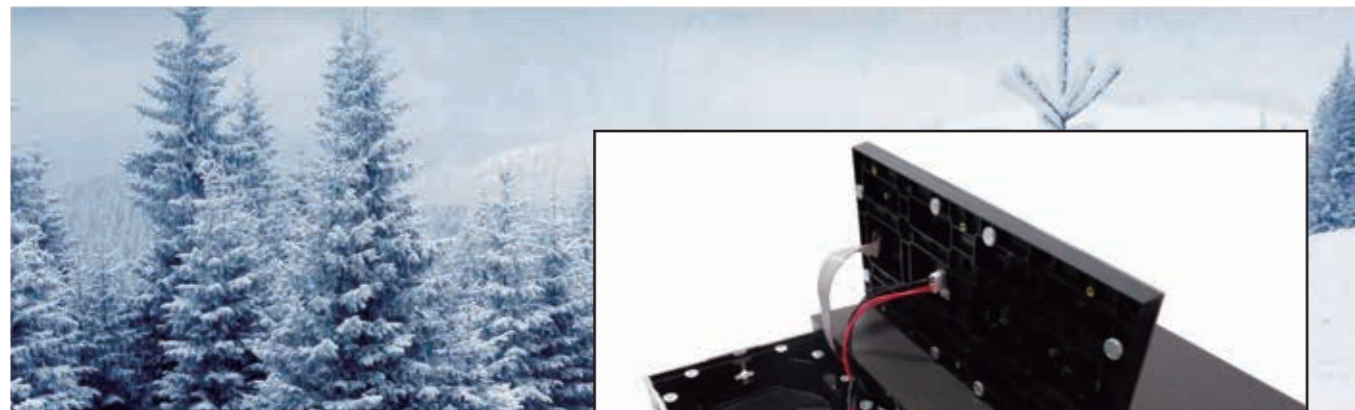


P2.5 In Myanmar



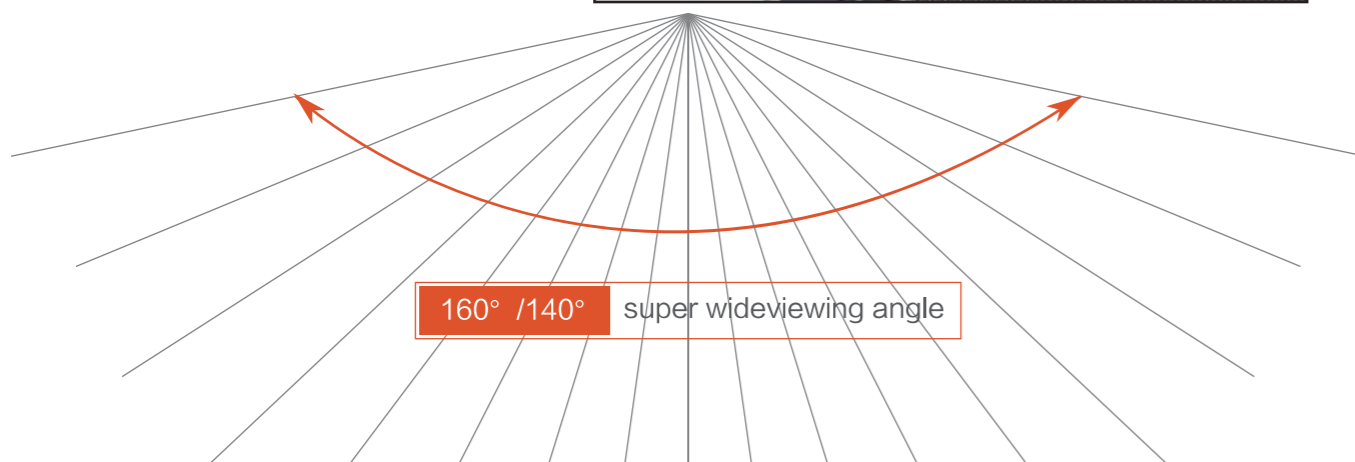
P3 In Nigeria

Ultra wide viewing angle Give you a new experience



Full front maintenance

HD display, large screen splicing



P2.5 In Peru

Memories With Customers

Whether you are a large organization looking to rebrand multiple locations across the country, or a smaller business looking to create one showstopper LED display for your business location, we can help.

